



## COUNTY VOTER INFORMATION GUIDE

# November 5, 2024 General Election

- ★ *All Santa Clara County registered voters will be mailed a Vote by Mail Ballot starting 29 days before Election Day. Inactive voters will not receive a Vote by Mail Ballot unless they update their voter registration or contact the Registrar of Voters' office.*
- ★ *Voters may choose to return the completed ballot by using the Free Prepaid Postage Return Envelope, at ANY Official Ballot Drop Box or ANY Santa Clara County Vote Center!*
- ★ *Voters can vote in person at ANY Vote Center location in Santa Clara County. Vote Centers are universal polling places and will be open several days.*
- ★ *Voters have more options to choose WHEN, WHERE, and HOW to vote. Check inside for more information.*



Voters have the option to view the County Voter Information Guide online.

**Go Green**—opt out of being mailed a paper copy of this guide by scanning the QR® code or visiting [www.sccvote.org/gogreen](http://www.sccvote.org/gogreen).



### County of Santa Clara Registrar of Voters

1555 Berger Drive, Building 2  
San Jose, CA 95112

**(408) 299-VOTE (8683) or  
Toll Free (866) 430-VOTE (8683)**



@sccvote



@sccvote



@sccvote



## County Voter Information Guide

The County Voter Information Guide does not contain a complete list of candidates. A complete list of candidates appears on the sample of the ballot. Each candidate's statement is volunteered by the candidate and is printed at their expense.

This Guide contains pages regarding candidate statements and/or ballot measures, analyses, and arguments (whichever apply to your ballot). Arguments in support of or in opposition to proposed measures are the opinions of the authors and have not been checked for accuracy by any official agency.

Although the materials provided in this Guide have been carefully proofread, typographical errors occasionally remain undetected. If a substantive error is discovered after the Guide has been printed, a correction notice will be issued.

## Language Assistance

The County of Santa Clara provides voting materials in English to all registered voters. In addition, as required by law, the Santa Clara County Registrar of Voters provides voting materials in Chinese, Spanish, Tagalog, and Vietnamese. Official Ballots are produced in the additional languages of Hindi, Japanese, Khmer, and Korean. Facsimile Ballots are available upon request in target areas in Gujarati, Nepali, Punjabi, Tamil, and Telugu languages. Voters may change their language preference at any time by calling the office or by mailing/faxing in a completed VOTER'S ACTION REQUEST FORM located in this Guide.

The office of the Registrar of Voters continues to prioritize multilingual services to improve services to all voters, including those who primarily speak another language other than English.

For language assistance, please call:

**(408) 299-VOTE (8683)**

or

**(866) 430-VOTE (8683)** toll free

or directly at

**中文** (408) 282-3086

**ESPAÑOL** (408) 282-3095

**TAGALOG** (408) 282-3089

**TIẾNG VIỆT** (408) 282-3097

**हिन्दी, 日本語, ལྷ་སྐད་ & 한국어** (408) 299-7655

**ગુજરાતી, नेपाली, ਪੰਜਾਬੀ, தமிழ் & తెలుగు** (408) 299-7655

## Other Voter Resources



**Disability Rights California Hotline** – (888) 569-7955 toll free



**Telecommunications Relay Service 711** – Assistive telephone relay service for people with impaired hearing.

**VOTE 411**

**VOTE411.org** is an interactive election website managed by the League of Women Voters Education Fund. It features non-partisan information about the candidates and measures on your ballot.

# County of Santa Clara

## Registrar of Voters

1555 Berger Drive, Bldg. 2  
San Jose, CA 95112  
Mailing Address: P.O. Box 611360, San Jose, CA 95161-1360  
(408) 299-VOTE (8683) (866) 430-VOTE (8683) FAX: (408) 998-7314  
[www.sccvote.org](http://www.sccvote.org)



Dear Santa Clara County Voter,

I am honored to share with you this County Voter Information Guide for the November 5, 2024 General Election. With the Presidential election and numerous important state and local contests appearing on this ballot, it is important to make a voting plan to ensure that your voice is heard.

### Make a Voting Plan

- **Make sure you are registered to vote at your current address:** You can look up your voter registration status on our website, [www.sccvote.org](http://www.sccvote.org). If you need to change your address or make other updates to your registration, download a Voter Action Request Form from our website. If you need to register or re-register to vote, go to [registertovote.ca.org](http://registertovote.ca.org).
- **Know your voting options:** Every active registered voter will automatically be mailed a vote-by-mail ballot. If you prefer to vote in person or need additional assistance, you can go to any Vote Center in the county, which open as early as 10 days before the election. To find Vote Center and Drop Box locations, visit [www.sccvote.org](http://www.sccvote.org). Additional resources for language assistance and accessible voting options are also available.
- **Find trusted election information from official sources to make an informed decision:** This County Voter Information Guide serves as a source of trusted information to help you navigate the voting process and learn about the candidates and measures appearing on your ballot. Use this guide along with trusted information from other official sources, such as the State Voter Guide from the California Secretary of State, to make an informed decision on your ballot.

### The Importance of Trusted Election Information

It's now more important than ever to make sure that you are using trusted election information from official, verified sources. There is so much information available to voters these days, especially online, which can make it difficult to know what you can trust. New and emerging technologies such as artificial intelligence can make it even more complicated.

That's why it's important to make sure you are getting trusted election information from official, reliable sources. This County Voter Information Guide and our website, [www.sccvote.org](http://www.sccvote.org), are a good start, along with the California Secretary of State's [www.sos.ca.gov](http://www.sos.ca.gov). Other official government sites like [vote.gov](http://vote.gov) and established, nonpartisan organizations like [vote411.org](http://vote411.org) can serve as trusted resources.

Remember, as an informed voter, it's important to be cautious to avoid misinformation and disinformation. If something seems surprising or suspicious, remember to check the source of the information before you share or repeat it. When in doubt, always fall back on trusted, official sources for verification.

If you have any questions about the voting process or need trusted election information, the Registrar of Voters' Office is here to help. Contact us by calling (408) 299-VOTE (8683) or Toll-Free at (866) 430-VOTE (8683), or by emailing [registrar@rov.sccgov.org](mailto:registrar@rov.sccgov.org).

Matt Moreles  
Acting Registrar of Voters

Board of Supervisors: Sylvia Arenas, Cindy Chavez, Otto Lee, Susan Ellenberg, S. Joseph Simitian  
County Executive: James R. Williams

# Information for Voters with Disabilities

## REMOTE ACCESSIBLE VOTE BY MAIL SYSTEM (RAVBM)

Voters with disabilities can now vote privately and independently by marking their ballot in a screen-readable format from a home computer using their own assistive technology.



All voters are able to access their specific ballot by visiting [www.sccvote.org/RAVBM](http://www.sccvote.org/RAVBM) starting 29 days before Election Day and entering their information through a secure portal. All ballots must be printed and follow the return instructions provided at the portal.

Voters can return their voted ballot by mail (must be postmarked by Election Day), or at any Official Ballot Drop Box, or at any Vote Center location.

Questions or comments? Email [votebymail@rov.sccgov.org](mailto:votebymail@rov.sccgov.org) or call **(408) 299-VOTE (8683)** or toll free **(866) 430-VOTE (8683)**. Please visit [www.sccvote.org/RAVBM](http://www.sccvote.org/RAVBM) for more information.

## IN PERSON VOTING

The Registrar of Voters strives to provide Vote Center locations that are accessible to the elderly and voters with disabilities.

The County of Santa Clara's new electronic voting system gives visually impaired voters the ability to cast a secret ballot without assistance. The voting system is equipped with an audio voting component that allows voters to listen to the ballot and make their choices using the keypad provided. The keypad includes a "sip and puff" feature as well.

Voters who are unable to mark their ballot may bring up to two individuals to assist them in voting.

**Audio recordings of the County Voter Information Guide are available at [www.sccvote.org/RAVBM](http://www.sccvote.org/RAVBM) and upon request. Call (408) 299-VOTE (8683) or toll free (866) 430-VOTE (8683).**



**Telecommunications Relay Service 711** – Assistive telephone relay service for people with impaired hearing.

### **Are You Having Difficulty Voting Because of a Disability?**

**CALL: (888) 569-7955**

**Disability Rights California operates a Voting Hotline:  
7:00 a.m. to 8:00 p.m. on November 5, 2024 General Election.**



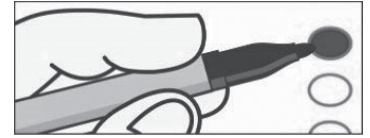
**We also answer calls prior to and following Election Day. The Voting Hotline is available year-round.**

Our goals are to help voters with disabilities have a successful voting experience and identify issues we can address in the current and future elections.

# Paper Ballot Voting Instructions

## How to Mark Your Paper Ballot:

- **Fill in the Oval completely** to the right of your selection
- When voting from home, use a black or blue ink pen. **NO RED INK**
- When voting at Vote Center, use marker provided
- Do not use check marks, X's, lines or circles
- No personal information or identification marks on your Official Ballot



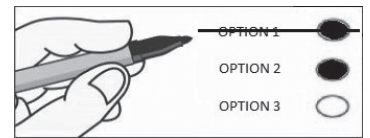
## Write-In Voting:

- Print the name of the qualified write-in candidate in the blank space provided and fill in the oval completely to the right of the write-in space
- Do not write in a candidate name already printed on the ballot



**Avoid Over-Voting.** To ensure your vote counts, do not vote for more candidates than allowed for each contest.

If you make a **mistake**, request a replacement ballot or if there is not enough time to receive a replacement ballot by mail, you may correct it by crossing out the wrong choice and filling out the correct oval as shown in picture.



## Voting at a Vote Center:

- Accessible voting
- Ballot marking devices
- Replacement ballots/Ballot Drop Box
- Election materials and language assistance
- Voter registration



## Voting by Mail:

- For ballot replacement, call (408) 299-VOTE (8683) or toll free (866) 430-VOTE (8683)
- After completing your ballot, place your voted ballot into your return envelope provided, complete the envelope and **SIGN** your name by the red "X" in order for the ballot to be counted



**Your voted ballot MUST be returned by 8 p.m. on Election Day OR postmarked on or before election day and received no later than 7 days after Election Day.**

**Deliver or mail your ballot early, so it can be included in the first Election Night Results!**

## Return Options:

- ✓ Mail your ballot. **No postage required**
- ✓ Return at any **Official Ballot Drop Box**
- ✓ Return at any **Vote Center**
- ✓ You may authorize in writing someone to return your ballot

## Sign up for "Where's My Ballot?":

The County of Santa Clara is now offering a new way to track and receive notifications on the status of your vote-by-mail ballot. Powered by BallotTrax, **Where's My Ballot?** lets you know where your ballot is, and its status, every step of the way. Sign-up at [WheresMyBallot.sos.ca.gov](http://WheresMyBallot.sos.ca.gov) to receive automatic email, SMS (text), or voice call notifications about your ballot.

Track your ballot status at

[www.sccvote.org](http://www.sccvote.org)



Scan this barcode with your smart phone.

# SAMPLE OF BALLOT / BOLETA DE MUESTRA

## Official Ballot / Boleta Oficial General Election / Elección General

CARD A

November 5, 2024 / 5 de noviembre de 2024  
County of Santa Clara / Condado de Santa Clara

English / Spanish

### Instructions for voting:

To vote, completely fill in the oval to the right of your choice. Use a blue or black ink to mark your ballot. NO RED INK. Do not select more candidates than the number to be elected. You may vote in as many or as few contests as you want. A mistake in one contest does not affect the rest of the ballot.



### Instrucciones para votar:

Para votar, complete en su totalidad el óvalo a la derecha de su selección. Utilice tinta azul o negra para marcar su boleta. NO UTILICE TINTA ROJA. No seleccione más candidatos que el número que debe elegir. Puede votar en la cantidad de contiendas que desee. Un error en una contienda no afecta el resto de la boleta.

**Write-in voting:** To vote for a qualified write-in candidate whose name is not on the ballot, write the person's name in the blank space provided and FILL IN THE OVAL to the right. If you make a mistake, you may request a new ballot.



**Voto por escrito:** Para votar por un candidato calificado por escrito cuyo nombre no aparece en la boleta, escriba el nombre de la persona en el espacio en blanco provisto y LLENE EL ÓVALO a la derecha. Si comete un error, puede solicitar una boleta nueva.

Party-Nominated Offices Cargos Nominados por los Partidos	Voter-Nominated and Nonpartisan Offices Cargos Nominados por los Votantes y No Partidarios	United States Representative Representante de los Estados Unidos
Candidates for these offices are the official nominee of the party displayed with their name. Los candidatos para estos cargos son los nominados oficiales del partido que aparece con su nombre.	Candidates display a party preference (or None) for the information of voters. This is not a party endorsement or approval. Los candidatos muestran una preferencia de partido (o Ninguna) para la información de los votantes. Esto no es un respaldo o una aprobación de un partido.	<b>District 16 / Distrito 16</b> <b>Vote for One Vote por Uno</b>
<b>President and Vice President Presidente y Vicepresidente</b>		<b>Evan Low</b> Party Preference: Democratic Preferencia de Partido: Demócrata California State Assemblymember Miembro de la Asamblea Estatal de California
<b>Vote for One Party Vote por Un Partido</b>	<b>There are two U.S. Senate contests on this ballot.</b> • One for the regular 6-year term ending January 3, 2031 • One for the remainder of the current term ending January 3, 2025 You may vote for both contests. Se incluyen dos contiendas del Senado de los EE. UU. en esta boleta electoral. • Una para el periodo ordinario de 6 años que termina el 3 de enero de 2031. • Una para lo que resta del periodo actual que termina el 3 de enero de 2025. Puede votar por las dos contiendas.	<b>Sam Liccardo</b> Party Preference: Democratic Preferencia de Partido: Demócrata Small Businessperson/Educator Empresario de Pequeña Empresa/Docente
<b>Chase Oliver</b> for President para Presidente <b>Libertarian</b> Libertario		<b>State Senator Senador Estatal</b>
<b>Mike ter Maat</b> for Vice President para Vicepresidente		<b>District 13 / Distrito 13</b> <b>Vote for One Vote por Uno</b>
<b>Jill Stein</b> for President para Presidente <b>Green</b> Verde		<b>Josh Becker</b> Party Preference: Democratic Preferencia de Partido: Demócrata California State Senator Senador Estatal de California
<b>Rudolph Ware</b> for Vice President para Vicepresidente	<b>United States Senator Senador de los Estados Unidos</b>	
<b>Donald J. Trump</b> for President para Presidente <b>Republican</b> Republicano	<b>Full Term Mandato Completo</b>	<b>Alexander Glew</b> Party Preference: Republican Preferencia de Partido: Republicano Professional Engineer/CEO Ingeniero Profesional/CEO
<b>JD Vance</b> for Vice President para Vicepresidente	<b>Vote for One Vote por Uno</b>	
<b>Claudia De la Cruz</b> for President para Presidente <b>Peace and Freedom</b> Paz y Libertad	<b>Steve Garvey</b> Party Preference: Republican Preferencia de Partido: Republicano Professional Baseball Representative Representante de Béisbol Profesional	<b>Member of the State Assembly Miembro de la Asamblea Estatal</b>
<b>Karina Garcia</b> for Vice President para Vicepresidente	<b>Adam B. Schiff</b> Party Preference: Democratic Preferencia de Partido: Demócrata United States Representative Representante de Estados Unidos	<b>District 23 / Distrito 23</b> <b>Vote for One Vote por Uno</b>
<b>Kamala D. Harris</b> for President para Presidente <b>Democratic</b> Demócrata	<b>Partial/Unexpired Term Mandato Parcial/No Expirado</b>	<b>Marc Berman</b> Party Preference: Democratic Preferencia de Partido: Demócrata State Assemblymember Miembro de la Asamblea Estatal
<b>Tim Walz</b> for Vice President para Vicepresidente	<b>Vote for One Vote por Uno</b>	<b>Lydia Kou</b> Party Preference: Democratic Preferencia de Partido: Demócrata Mayor of Palo Alto Alcaldesa de Palo Alto
<b>Robert F. Kennedy Jr.</b> for President para Presidente <b>American Independent</b> Independiente Americano	<b>Steve Garvey</b> Party Preference: Republican Preferencia de Partido: Republicano Professional Baseball Representative Representante de Béisbol Profesional	
<b>Nicole Shanahan</b> for Vice President para Vicepresidente	<b>Adam B. Schiff</b> Party Preference: Democratic Preferencia de Partido: Demócrata United States Representative Representante de Estados Unidos	

VOTE BOTH SIDES (OVER)  
VOTE EN AMBOS LADOS (VER AL REVERSO)

# SAMPLE OF BALLOT / BOLETA DE MUESTRA

CARD A

Official Ballot Continued / Boleta Oficial Continuación

English / Spanish

<b>Judicial / Judicial</b>	<b>Palo Alto Unified School District Distrito Escolar Unificado de Palo Alto</b>
<b>Judge of the Superior Court, Office No. 5 Juez del Tribunal Superior, Cargo Núm. 5</b>	<b>Governing Board Member Miembro de la Junta de Gobierno</b>
<b>Vote for One Vote por Uno</b>	<b>Vote for no more than Three Vote por no más de Tres</b>
<b>Jay Boyarsky</b> <input type="radio"/> County of Santa Clara, Chief Assistant District Attorney Fiscal Adjunto Jefe de Distrito del Condado de Santa Clara	<b>Mazhar Hussain</b> <input type="radio"/> Parent Padre de Familia
<b>Johnene Linda Stebbins</b> <input type="radio"/> County of Santa Clara, Deputy District Attorney Delegada del Fiscal de Distrito del Condado de Santa Clara	<b>Rowena Chiu</b> <input type="radio"/> Economist/Lawyer/Parent Economista/Abogada/Madre de Familia
<input type="radio"/>	<b>Nicole Chiu-Wang</b> <input type="radio"/> Education Nonprofit Executive Ejecutiva de Organización Educativa Sin Fines de Lucro
<input type="radio"/>	<b>Chris Colohan</b> <input type="radio"/> Substitute Teacher Maestro Suplente
<b>School / Escuela</b>	
<b>Santa Clara County Board of Education Junta de Educación del Condado de Santa Clara</b>	<b>Alison Kamhi</b> <input type="radio"/> Attorney/Parent Abogada/Madre de Familia
<b>Member, Board of Education Trustee Area 1 Miembro de la Junta de Educación Área de Síndico 1</b>	<b>Josh Salcman</b> <input type="radio"/> Retired Executive/Parent Ejecutivo Jubilado/Padre de Familia
<b>Vote for One Vote por Uno</b>	<input type="radio"/>
<b>Grace H. Mah</b> <input type="radio"/> Governing Board Member, Santa Clara County Board of Education, Trustee Area 1 Miembro de la Junta de Gobierno, Junta de Educación del Condado de Santa Clara, Área de Síndico 1	<input type="radio"/>
<b>Jessica Speiser</b> <input type="radio"/> School Trustee/Mother Síndica Escolar/Madre de Familia	<input type="radio"/>
<input type="radio"/>	<input type="radio"/>
	<b>County / Condado</b>
	<b>Member, Board of Supervisors District 5 Miembro, Junta de Supervisores Distrito 5</b>
	<b>Vote for One Vote por Uno</b>
<b>Foothill-De Anza Community College District Distrito de Universidad Comunitaria Foothill-De Anza</b>	<b>Sally J. Lieber</b> <input type="radio"/> Member, California State Board of Equalization Miembro de la Junta de Igualación del Estado de California
<b>Governing Board Member, Trustee Area 5 Miembro de la Junta de Gobierno Área de Síndico 5</b>	<b>Margaret Abe-Koga</b> <input type="radio"/> City Councilmember/Mother Miembro del Concejo Municipal/Madre de Familia
<b>Vote for One Vote por Uno</b>	<input type="radio"/>
<b>Terry Godfrey</b> <input type="radio"/> Chief Financial Officer Directora de Finanzas	<input type="radio"/>
<b>Forest Olaf Peterson</b> <input type="radio"/> Educator/Engineer/Laborer Educador/Ingeniero/Obrero	
<input type="radio"/>	

VOTE BOTH SIDES (OVER)  
VOTE EN AMBOS LADOS (VER AL REVERSO)

# SAMPLE OF BALLOT / BOLETA DE MUESTRA

## County of Santa Clara / Condado de Santa Clara

CARD B

Official Ballot Continued / Boleta Oficial Continuación

November 5, 2024 General Election / 5 de noviembre de 2024 Elección General

English / Spanish

City / Ciudad	Measures Submitted to the Voters Medidas Sometidas a los Votantes	
City of Palo Alto / Ciudad de Palo Alto		
Member, City Council Miembro del Concejo Municipal	State / Estatal	
Vote for no more than Four Vote por no más de Cuatro		
George Lu <input type="radio"/>	<p><b>2 AUTHORIZES BONDS FOR PUBLIC SCHOOL AND COMMUNITY COLLEGE FACILITIES. LEGISLATIVE STATUTE.</b>                      Authorizes \$10 billion in general obligation bonds for repair, upgrade, and construction of facilities at K-12 public schools (including charter schools), community colleges, and career technical education programs, including for improvement of health and safety conditions and classroom upgrades. Requires annual audits. <b>Fiscal Impact:</b> Increased state costs of about \$500 million annually for 35 years to repay the bond. <b>Supporters:</b> California Teachers Association; California School Nurses Organization; Community College League of California  <b>Opponents:</b> Howard Jarvis Taxpayers Association</p> <p><b>AUTORIZA BONOS PARA INSTALACIONES DE ESCUELAS PÚBLICAS Y UNIVERSIDADES COMUNITARIAS. LEY LEGISLATIVA.</b>                      Autoriza \$10 mil millones en bonos de obligaciones generales para la reparación, modernización y construcción de instalaciones en escuelas públicas K-12 (incluidas las escuelas autónomas), universidades comunitarias, y programas de educación técnica profesional, incluida la mejora de las condiciones de salud y seguridad y modernizaciones de las aulas. Requiere auditorías anuales. <b>Impacto fiscal:</b> Aumento de los costos del estado en unos \$500 millones al año por 35 años para pagar el bono. <b>Partidarios:</b> Asociación de Maestros de California; Organización de Enfermeras Escolares de California; Liga de Universidades Comunitarias de California  <b>Opositores:</b> Howard Jarvis Taxpayers Association</p>	<p><b>3 CONSTITUTIONAL RIGHT TO MARRIAGE. LEGISLATIVE CONSTITUTIONAL AMENDMENT.</b> Amends California Constitution to recognize fundamental right to marry, regardless of sex or race. Removes language in California Constitution stating that marriage is only between a man and a woman. <b>Fiscal Impact:</b> No change in revenues or costs for state and local governments. <b>Supporters:</b> Sierra Pacific Synod of The Evangelical Lutheran Church in America; Dolores Huerta Foundation; Equality California  <b>Opponents:</b> Jonathan Keller, California Family Council; Rev. Tanner DiBella</p> <p><b>DERECHO CONSTITUCIONAL AL MATRIMONIO. ENMIENDA LEGISLATIVA CONSTITUCIONAL.</b> Enmienda la Constitución de California para reconocer el derecho fundamental al matrimonio, independientemente del sexo o la raza. Elimina el texto de la Constitución de California que indica que el matrimonio es solo entre un hombre y una mujer. <b>Impacto fiscal:</b> Sin cambio en los ingresos o costos para los gobiernos estatales y locales. <b>Partidarios:</b> Sínodo Sierra Pacific de la Iglesia Evangélica Luterana de Estados Unidos; Fundación Dolores Huerta; Organización Equality California  <b>Opositores:</b> Jonathan Keller, Consejo de las Familias de California; Rev. Tanner DiBella</p>
Cari Templeton <input type="radio"/>		
Henry Etzkowitz <input type="radio"/>		
Keith Reckdahl <input type="radio"/>		
Katie Causey <input type="radio"/>		
Anne W. Cribbs <input type="radio"/>		
Pat Burt <input type="radio"/>		
Greer Stone <input type="radio"/>		
Doria Summa <input type="radio"/>		
<input type="radio"/>		
<input type="radio"/>		
<input type="radio"/>		
	Yes / Sí <input type="radio"/>	
	No / No <input type="radio"/>	
	Yes / Sí <input type="radio"/>	
	No / No <input type="radio"/>	

VOTE BOTH SIDES (OVER)  
VOTE EN AMBOS LADOS (VER AL REVERSO)



# SAMPLE OF BALLOT / BOLETA DE MUESTRA

CARD B

Official Ballot Continued / Boleta Oficial Continuación

English / Spanish

Measures Submitted to the Voters Medidas Sometidas a los Votantes	
State / Estatal	
<p><b>4 AUTHORIZES BONDS FOR SAFE DRINKING WATER, WILDFIRE PREVENTION, AND PROTECTING COMMUNITIES AND NATURAL LANDS FROM CLIMATE RISKS. LEGISLATIVE STATUTE.</b> Authorizes \$10 billion in general obligation bonds for water, wildfire prevention, and protection of communities and lands. Requires annual audits. <b>Fiscal Impact:</b> Increased state costs of about \$400 million annually for 40 years to repay the bond.  <b>Supporters:</b> Clean Water Action; CALFIRE Firefighters; National Wildlife Federation; The Nature Conservancy  <b>Opponents:</b> Howard Jarvis Taxpayers Association</p> <p><b>AUTORIZA LOS BONOS PARA AGUA POTABLE SEGURA, PREVENCIÓN DE INCENDIOS FORESTALES Y PROTECCIÓN DE LAS COMUNIDADES Y LAS TIERRAS NATURALES CONTRA LOS RIESGOS CLIMÁTICOS. LEY LEGISLATIVA.</b> Autoriza \$10 mil millones en bonos de obligaciones generales para agua, prevención de incendios forestales y protección de comunidades y tierras. Requiere auditorías anuales. <b>Impacto fiscal:</b> Aumento de los costos del estado en unos \$400 millones al año por 40 años para pagar el bono.  <b>Partidarios:</b> Acción por el Agua Limpia; Bomberos de CALFIRE; Federación Nacional de la Vida Salvaje; Conservación de la Naturaleza  <b>Opositores:</b> Howard Jarvis Taxpayers Association</p>	
Yes / Sí <input type="radio"/>	
No / No <input type="radio"/>	
<p><b>5 ALLOWS LOCAL BONDS FOR AFFORDABLE HOUSING AND PUBLIC INFRASTRUCTURE WITH 55% VOTER APPROVAL. LEGISLATIVE CONSTITUTIONAL AMENDMENT.</b> Allows approval of local infrastructure and housing bonds for low- and middle-income Californians with 55% vote. Accountability requirements. <b>Fiscal Impact:</b> Increased local borrowing to fund affordable housing, supportive housing, and public infrastructure. The amount would depend on decisions by local governments and voters. Borrowing would be repaid with higher property taxes.  <b>Supporters:</b> California Professional Firefighters; League of Women Voters of California; Habitat for Humanity California  <b>Opponents:</b> California Taxpayers Association; California Hispanic Chambers of Commerce; Women Veterans Alliance</p> <p><b>PERMITE BONOS LOCALES PARA VIVIENDAS ASEQUIBLES E INFRAESTRUCTURAS PÚBLICAS CON LA APROBACIÓN DEL 55 % DE LOS VOTANTES. ENMIENDA LEGISLATIVA CONSTITUCIONAL.</b> Permite la aprobación de bonos locales de infraestructura y vivienda para californianos de ingresos bajos y medianos con un 55 % de los votos. Requisitos de responsabilidad. <b>Impacto fiscal:</b> Aumento de los préstamos locales para financiar la vivienda asequible, la vivienda de apoyo y la infraestructura pública. La cantidad dependerá de las decisiones de los gobiernos locales y los votantes. Los préstamos se devolverán con el aumento de los impuestos a la propiedad.  <b>Partidarios:</b> Bomberos Profesionales de California; Liga de Mujeres Votantes de California; Hábitat para la Humanidad California  <b>Opositores:</b> Asociación de Contribuyentes de California; Cámaras de Comercio de Hispanos de California; Alianza de Mujeres Veteranas</p>	
Yes / Sí <input type="radio"/>	
No / No <input type="radio"/>	
<p><b>6 ELIMINATES CONSTITUTIONAL PROVISION ALLOWING INVOLUNTARY SERVITUDE FOR INCARCERATED PERSONS. LEGISLATIVE CONSTITUTIONAL AMENDMENT.</b> Amends the California Constitution to remove current provision that allows jails and prisons to impose involuntary servitude to punish crime (<i>i.e.</i>, forcing incarcerated persons to work). <b>Fiscal Impact:</b> Potential increase or decrease in state and local costs, depending on how work for people in state prison and county jail changes. Any effect likely would not exceed the tens of millions of dollars annually.  <b>Supporters:</b> Assemblymember Lori Wilson  <b>Opponents:</b> None submitted</p> <p><b>ELIMINA LA DISPOSICIÓN CONSTITUCIONAL QUE PERMITE LA SERVIDUMBRE INVOLUNTARIA PARA LAS PERSONAS EN PRISIÓN. ENMIENDA LEGISLATIVA CONSTITUCIONAL.</b> Enmienda la Constitución de California para eliminar la disposición actual que permite a las cárceles y prisiones imponer una servidumbre involuntaria para castigar el delito (<i>es decir</i>, obligar a trabajar a las personas en prisión). <b>Impacto fiscal:</b> Aumento o reducción potencial de los costos estatales y locales, dependiendo del cambio de las reglas sobre el trabajo para las personas en prisiones estatales y cárceles del condado. Cualquier efecto probablemente no excedería las decenas de millones de dólares al año.  <b>Partidarios:</b> Miembro de la Asamblea Lori Wilson  <b>Opositores:</b> No se realizaron presentaciones</p>	
Yes / Sí <input type="radio"/>	
No / No <input type="radio"/>	
<p><b>32 RAISES MINIMUM WAGE. INITIATIVE STATUTE.</b> Raises minimum wage as follows: For employers with 26 or more employees, to \$17 immediately, \$18 on January 1, 2025. For employers with 25 or fewer employees, to \$17 on January 1, 2025, \$18 on January 1, 2026. <b>Fiscal Impact:</b> State and local government costs could increase or decrease by up to hundreds of millions of dollars annually. State and local revenues likely would decrease by no more than a few hundred million dollars annually.  <b>Supporters:</b> None submitted  <b>Opponents:</b> California Chamber of Commerce; California Restaurant Association; California Grocers Association</p> <p><b>AUMENTA EL SALARIO MÍNIMO. INICIATIVA DE LEY.</b> Aumenta el salario mínimo de la siguiente forma: Para los empleadores con 26 o más empleados, a \$17 de inmediato, a \$18 el 1 de enero de 2025. Para los empleadores con 25 o menos empleados, a \$17 el 1 de enero de 2025, a \$18 el 1 de enero de 2026. <b>Impacto fiscal:</b> Los costos del gobierno estatal y local podrían aumentar o reducirse en cientos de millones de dólares al año. Los ingresos estatales y locales probablemente se reducirían en unos cuantos cientos de millones de dólares al año como máximo.  <b>Partidarios:</b> No se realizaron presentaciones  <b>Opositores:</b> Cámara de Comercio de California; Asociación de Restaurantes de California; Asociación de Comerciantes de Alimentos de California</p>	
Yes / Sí <input type="radio"/>	
No / No <input type="radio"/>	

VOTE BOTH SIDES (OVER)  
VOTE EN AMBOS LADOS (VER AL REVERSO)

# SAMPLE OF BALLOT / BOLETA DE MUESTRA

County of Santa Clara / Condado de Santa Clara	
CARD C	Official Ballot Continued / Boleta Oficial Continuación
November 5, 2024 General Election / 5 de noviembre de 2024 Elección General	
English / Spanish	
Measures Submitted to the Voters / Medidas Sometidas a los Votantes	
State / Estatal	
<p><b>33 EXPANDS LOCAL GOVERNMENTS' AUTHORITY TO ENACT RENT CONTROL ON RESIDENTIAL PROPERTY. INITIATIVE STATUTE.</b> Repeals Costa-Hawkins Rental Housing Act of 1995, which currently prohibits local ordinances limiting initial residential rental rates for new tenants or rent increases for existing tenants in certain residential properties. <b>Fiscal Impact:</b> Reduction in local property tax revenues of at least tens of millions of dollars annually due to likely expansion of rent control in some communities. <b>Supporters:</b> CA Nurses Assoc.; CA Alliance for Retired Americans; Mental Health Advocacy; Coalition for Economic Survival; TenantsTogether <b>Opponents:</b> California Council for Affordable Housing; Women Veterans Alliance; California Chamber of Commerce</p> <p><b>EXPANDE LA AUTORIDAD DE LOS GOBIERNOS LOCALES DE PROMULGAR EL CONTROL DE LA RENTA EN PROPIEDADES RESIDENCIALES. INICIATIVA DE LEY.</b> Revoca la Ley de Viviendas de Renta de Costa-Hawkins de 1995, que actualmente prohíbe que las ordenanzas locales limiten las tarifas iniciales de renta residencial para nuevos inquilinos o aumentos de renta para inquilinos existentes en ciertas propiedades residenciales. <b>Impacto fiscal:</b> Reducción de los ingresos por los impuestos locales sobre la propiedad en al menos decenas de millones de dólares al año debido a la probable expansión del control de la renta en algunas comunidades. <b>Partidarios:</b> Asociación de Enfermeras de CA; Alianza para Americanos Jubilados de CA; Defensa de la Salud Mental; Coalición para la Supervivencia Económica; TenantsTogether <b>Opositores:</b> Consejo de California para la Vivienda Asequible; Alianza de Mujeres Veteranas; Cámara de Comercio de California</p>	Yes / Sí <input type="radio"/>
	No / No <input type="radio"/>
<p><b>34 RESTRICTS SPENDING OF PRESCRIPTION DRUG REVENUES BY CERTAIN HEALTH CARE PROVIDERS. INITIATIVE STATUTE.</b> Requires certain providers to spend 98% of revenues from federal discount prescription drug program on direct patient care. Authorizes statewide negotiation of Medi-Cal drug prices. <b>Fiscal Impact:</b> Increased state costs, likely in the millions of dollars annually, to enforce new rules on certain health care entities. Affected entities would pay fees to cover these costs. <b>Supporters:</b> The ALS Association; California Chronic Care Coalition; Latino Heritage Los Angeles <b>Opponents:</b> National Org. for Women; Consumer Watchdog; Coalition for Economic Survival; AIDS Healthcare Foundation; Dolores Huerta</p> <p><b>RESTRINGE EL GASTO DE LOS INGRESOS DE MEDICAMENTOS RECETADOS POR PARTE DE CIERTOS PROVEEDORES DEL CUIDADO DE LA SALUD. INICIATIVA DE LEY.</b> Requiere que ciertos proveedores gasten el 98 % de los ingresos del programa federal de descuento en medicamentos recetados en atención directa al paciente. Autoriza la negociación en todo el estado de los precios de medicamentos de Medi-Cal. <b>Impacto fiscal:</b> Aumento de los costos estatales, probablemente en millones de dólares al año, para aplicar las nuevas reglas a ciertas entidades de cuidado de la salud. Las entidades afectadas pagarían tarifas para cubrir estos costos. <b>Partidarios:</b> Asociación ALS; Coalición de California para los Cuidados Crónicos; Herencia Latina Los Angeles <b>Opositores:</b> Organización Nacional para la Mujer; Defensor de los Consumidores; Coalición para la Supervivencia Económica; Fundación para los Cuidados del AIDS; Dolores Huerta</p>	Yes / Sí <input type="radio"/>
	No / No <input type="radio"/>
<p><b>35 PROVIDES PERMANENT FUNDING FOR MEDI-CAL HEALTH CARE SERVICES. INITIATIVE STATUTE.</b> Makes permanent the existing tax on managed health care insurance plans, which, if approved by the federal government, provides revenues to pay for Medi-Cal health care services. <b>Fiscal Impact:</b> Short-term state costs between roughly \$1 billion and \$2 billion annually to increase funding for certain health programs. Total funding increase between roughly \$2 billion to \$5 billion annually. Unknown long-term fiscal effects. <b>Supporters:</b> Planned Parenthood Affiliates of CA; American College of Obstetricians &amp; Gynecologists; American Academy of Pediatrics, CA <b>Opponents:</b> None submitted</p> <p><b>PROPORCIONA FONDOS PERMANENTES PARA LOS SERVICIOS DE SALUD DE MEDI-CAL. INICIATIVA DE LEY.</b> Establece como permanente el impuesto existente a los planes administrados de seguro de salud que, si se aprueba por el gobierno federal, proporciona ingresos para pagar los servicios de cuidado de la salud de Medi-Cal. <b>Impacto fiscal:</b> Costos estatales a corto plazo de entre aproximadamente \$1 mil millones y \$2 mil millones al año a fin de aumentar los fondos para ciertos programas de salud. Los fondos totales aumentarán entre aproximadamente \$2 mil millones y \$5 mil millones al año. No se conocen los efectos fiscales a largo plazo. <b>Partidarios:</b> Filiales de Planned Parenthood de CA; Colegio Americano de Obstetras y Ginecólogos; Academia Americana de Pediatría, CA <b>Opositores:</b> No se realizaron presentaciones</p>	Yes / Sí <input type="radio"/>
	No / No <input type="radio"/>
<p><b>36 ALLOWS FELONY CHARGES AND INCREASES SENTENCES FOR CERTAIN DRUG AND THEFT CRIMES. INITIATIVE STATUTE.</b> Allows felony charges for possessing certain drugs and for thefts under \$950, if defendant has two prior drug or theft convictions. <b>Fiscal Impact:</b> State criminal justice costs likely ranging from several tens of millions of dollars to the low hundreds of millions of dollars annually. Local criminal justice costs likely in the tens of millions of dollars annually. <b>Supporters:</b> Crime Victims United of California; California District Attorneys Association; Family Business Association of California <b>Opponents:</b> Diana Becton, District Attorney Contra Costa County; Crime Survivors for Safety and Justice</p> <p><b>PERMITE CARGOS DE DELITO GRAVE Y AUMENTA LAS SENTENCIAS POR CIERTOS DELITOS RELACIONADOS CON DROGAS Y HURTO. INICIATIVA DE LEY.</b> Permite cargos de delito grave por posesión de ciertas drogas y hurto menor a \$950, si el acusado tiene dos condenas anteriores por drogas o hurto. <b>Impacto fiscal:</b> Los costos estatales de la justicia penal probablemente oscilen entre varias decenas de millones de dólares y unos pocos cientos de millones de dólares al año. Costos de la justicia penal local probablemente de decenas de millones de dólares al año. <b>Partidarios:</b> Víctimas del Crimen Unidas de California; Asociación de Fiscales de Distrito de California; Asociación de Empresas Familiares de California <b>Opositores:</b> Diana Becton, Fiscal de Distrito del Condado de Contra Costa; Sobrevivientes del Crimen por la Seguridad y la Justicia</p>	Yes / Sí <input type="radio"/>
	No / No <input type="radio"/>

VOTE BOTH SIDES (OVER)  
VOTE EN AMBOS LADOS (VER AL REVERSO)

# SAMPLE OF BALLOT / BOLETA DE MUESTRA

CARD C

Official Ballot Continued / Boleta Oficial Continuación

English / Spanish

City / Ciudad	
City of Palo Alto Ciudad de Palo Alto	
<p><b>D</b> To reduce traffic congestion and travel time for transit riders, shall the measure undedicating a 0.33-acre portion of existing parkland in El Camino Park for the purpose of creating a new road primarily for transit vehicles linking the Palo Alto Transit Center with El Camino Real, be adopted?</p> <p><b>Supporters:</b> None submitted. <b>Opponents:</b> None submitted.</p> <p>Para reducir la congestión del tráfico y el tiempo de viaje de los usuarios del transporte público, ¿debe adoptarse la medida que anula la asignación de una porción de 0.33 acres del parque existente en el Parque El Camino con el fin de crear un nuevo camino principalmente para vehículos de transporte público que conecte el Centro de Tránsito Palo Alto con El Camino Real?</p> <p><b>Partidarios:</b> No se presentó ninguno. <b>Opositores:</b> No se presentó ninguno.</p>	
	Yes / Sí <input type="radio"/>
	No / No <input type="radio"/>

VOTE BOTH SIDES (OVER)  
VOTE EN AMBOS LADOS (VER AL REVERSO)

## Office of United States Senate Contests Notice:

There are two U.S. Senate contests on the November 5, 2024 General Election ballot.

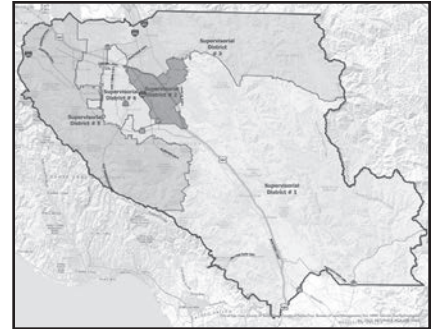
The first contest is the regular election for the full 6-year term ending January 3, 2031.

The second contest is a special vacancy election (the current officeholder is temporarily filling a vacancy) for the remainder of the current term ending January 3, 2025.

You may vote for both contests.

### Redistricting

Every ten years following the census, California's district lines are redrawn. This election uses the new district lines for Congress, State Senate, State Assembly, State Board of Equalization District 2, County Board of Supervisors, and Cities. You may find you do not live in the same districts you did the last time you voted. Because of this, your ballot may have different contests and candidates than you are used to seeing; and in some cases, your previous representative may not be a candidate for your new district.



Voters may look up their election districts by visiting [www.sccvote.org](http://www.sccvote.org) and selecting the icon "Look Up Your District" under our Popular Services link on our home page. Voters can also access a list of their elected representatives within Santa Clara County at [www.sccvote.org](http://www.sccvote.org) under the "Candidates & Measures" drop down menu by selecting the List of Officeholders.

Please visit <https://sccvote.sccgov.org/elections/redistricting> for more information about redistricting.

If you need additional information, please call toll-free (866) 430-VOTE (8683).

## IMPORTANT INFORMATION FOR VOTERS

**Top Two Candidates Open Primary Act:** Proposition 14, passed by voters in 2010, changed the way primary elections are conducted in California. All "partisan" offices, except for President and party central committee, are now "voter-nominated" offices.

- You may choose any candidate running for a voter-nominated office, regardless of the party you or the candidate prefers.
- For this election, United States Senate, United States Representative, State Senate, and State Assembly are voter-nominated offices.
- The two candidates with the highest number of votes in the primary election, regardless of party preference, go on to the general election ballot. There may be two candidates with the same party preference on your ballot for some voter-nominated offices.

### PARTY ENDORSEMENTS

California law authorizes political parties to endorse candidates running for voter-nominated offices. Parties not listed below did not submit endorsements for voter-nominated offices within Santa Clara County by the deadline.

**REPUBLICAN:** Anita Chen (U.S. Rep. 17), Peter D. Hernandez (U.S. Rep. 18), Jason Michael Anderson (U.S. Rep. 19), Alexander Glew (State Senate 13), Robert Paul Howell (State Senate 15), Bob Brunton (24th Assembly), Ted Stroll (25th Assembly), Liz Lawler (28th Assembly), J.W. Paine (29th Assembly)

**AMERICAN INDEPENDENT:** Sam Liccardo (U.S. Rep. 16), Anita Chen (U.S. Rep. 17), Peter D. Hernandez (U.S. Rep. 18), Jason Michael Anderson (U.S. Rep. 19), Josh Becker (State Senate 13), Robert Paul Howell (State Senate 15), Lydia Kou (23rd Assembly), Bob Brunton (24th Assembly), Patrick Ahrens (26th Assembly), J.W. Paine (29th Assembly)

**DEMOCRATIC:** Kamala D. Harris/Tim Walz (Pres./V.P.), Adam B. Schiff (U.S. Senate), Evan Low (U.S. Rep. 16), Ro Khanna (U.S. Rep. 17), Zoe Lofgren (U.S. Rep. 18), Jimmy Panetta (U.S. Rep. 19), Josh Becker (State Senate 13), Dave Cortese (State Senate 15), Marc Berman (23rd Assembly), Alex Lee (24th Assembly), Ash Kalra (25th Assembly), Patrick Ahrens (26th Assembly), Gail Pellerin (28th Assembly), Robert Rivas (29th Assembly)

### VOLUNTARY SPENDING LIMITS

Pursuant to Proposition 34, adopted November 7, 2000, the following candidates have accepted voluntary spending limits and are eligible to submit a candidate statement. This list of candidates is provided by the Secretary of State's Office and may have been updated after this guide was printed. Please visit [www.sos.ca.gov](http://www.sos.ca.gov) and search for Proposition 34 Candidate Statements, to view the most current *November 5, 2024 General Election Legislative Candidates Form 501 Status Report*, available as a PDF.

<b>Office</b>		<b>Candidate Name</b>	<b>Party Preference</b>	<b>Office</b>		<b>Candidate Name</b>	<b>Party Preference</b>
Senate	13	Josh Becker	Democratic	Assembly	25	Ash Kalra	Democratic
Senate	13	Alexander Glew	Republican	Assembly	25	Ted Stroll	Republican
Senate	15	Robert Paul Howell	Republican	Assembly	26	Patrick Ahrens	Democratic
Senate	15	Dave Cortese	Democratic	Assembly	26	Tara Sreekrishnan	Democratic
Assembly	23	Marc Berman	Democratic	Assembly	28	Liz Lawler	Republican
Assembly	23	Lydia Kou	Democratic	Assembly	28	Gail Pellerin	Democratic
Assembly	24	Bob Brunton	Republican	Assembly	29	J.W. Paine	Republican
Assembly	24	Alex Lee	Democratic				

**CANDIDATE STATEMENTS FOR  
UNITED STATES REPRESENTATIVE, DISTRICT 16**

<b>SAM LICCARDO</b>	<b>EVAN LOW</b>
<p><b>Occupation:</b> Small Businessperson/Educator <span style="float: right;"><b>Age:</b> 54</span></p> <p><b>Education and Qualifications:</b></p> <p>Our Santa Clara County families are struggling. We need leaders in Congress who stand up for us, defend our values, and get results. We need Sam Liccardo.</p> <p>Sam Liccardo brings all sides together to solve tough problems. As San Jose Mayor, Sam's bipartisan reforms saved taxpayers \$3 billion, turning budget deficits into a \$30 million surplus. Sam's cost-effective approach to construct homeless housing reduced street homelessness 11% in his final year in office. As crime surged nationally, Sam added 200 police officers and enacted the nation's strongest gun safety laws, leaving San Jose with America's lowest big-city murder rate. Sam led innovative initiatives to enable thousands of students from struggling families to afford college, get summer jobs, and access free high-speed internet.</p> <p>A former prosecutor, Sam Liccardo takes on powerful interests—and wins. Sam fought PG&amp;E's massive rate hikes, launching a clean energy alternative that provides greener electricity to 1 million residents at 8% lower rates than PG&amp;E's. The Sierra Club's endorsed candidate, Sam defeated powerful developers to preserve Valley hillsides and open space.</p> <p>In Congress, Sam Liccardo will continue taking on special interests by tackling soaring costs of prescription drugs, utilities, insurance, and groceries. Sam will protect our reproductive rights—from IVF to birth control to abortion—and Social Security and Medicare. He'll fight for a fairer tax code for our hard-working middle class, and for federal action to address housing affordability and homelessness.</p> <p>Others talk—Sam Liccardo gets results. Read Sam's 'Let's Get It Done' action plan at <a href="http://SamLiccardo.com">SamLiccardo.com</a>. Let's get it done, together.</p>	<p><b>Occupation:</b> California State Assemblymember <span style="float: right;"><b>Age:</b> 41</span></p> <p><b>Education and Qualifications:</b></p> <p>My passion to serve is born from my immigrant family's values and their firm belief in hard work and commitment to our community.</p> <p>Elected as the youngest Asian American mayor and youngest LGBT mayor in the country, I entered public service to champion the middle class. During my ten years of service as an Assemblymember, I was named California's most effective lawmaker, delivering more signed bills than any other member. I helped deliver over \$40 billion to build more affordable housing, increase funding for our public schools, provide free community college, and support families struggling with the cost of living. When reproductive rights were under assault, I co-authored legislation to enshrine reproductive freedom in the California Constitution.</p> <p>Your safety is personal to me. As the proud brother of a police officer serving this district, I led the charge to increase law enforcement funding and keep guns out of the hands of criminals and people with mental illness. I was named "Legislator of the Year" by the California Police Chiefs Association.</p> <p>In Washington, I will take on lobbyists, hold oil companies accountable and fight pharmaceutical companies from price gouging. I am committed to making our region more affordable for middle and working class families. I'm the only candidate in this race endorsed by the California Democratic Party, labor unions, firefighters, police, nurses and teachers—and with a 100% score from Planned Parenthood.</p> <p>Please text me directly at 408-692-5428. That is the kind of representative I will be.</p> <p>Join us: <a href="http://EvanLowforCongress.com">EvanLowforCongress.com</a>.</p>

**CANDIDATE STATEMENTS FOR  
MEMBER OF THE STATE ASSEMBLY, DISTRICT 23**

**MARC BERMAN**

**Occupation:** State Assemblymember

**Education and Qualifications:**

Serving you is an honor. In difficult times nationally and here in California, I'm proud to see our communities come together, supporting each other and tackling our biggest challenges. There's still so much work to do, and I'm ready to keep meeting the moment together.

A woman's right to control her own body and make her own healthcare decisions is under attack. I'm proud to help lead California's efforts to strengthen and expand access to reproductive healthcare services, including abortion.

As Chair of the Assembly Elections Committee, I wrote the law to create criminal penalties for intentionally spreading misinformation about when, where, and how to vote, and created the nation's first Office of Elections Cybersecurity to protect against cyberattacks.

With devastating wildfires and historic droughts making the climate crisis even more urgent, I authored landmark legislation to dramatically reduce air and noise pollution here in California, protecting the health of our communities, our workers, and our planet.

To help students graduate from college without crippling debt, I worked with higher education leaders to write transformational legislation that makes it easier for community college students to transfer to four-year colleges and universities, and led efforts to address basic needs for college students like housing and food insecurity.

I'm proud to be endorsed by Planned Parenthood Advocates Mar Monte, California Firefighters Local 2881, Sierra Club, the California Democratic Party, and Congresswoman Anna Eshoo.

I humbly ask for your support to continue our work together.

Please visit [www.VoteBerman.com](http://www.VoteBerman.com) to learn more.

**LYDIA KOU**

**Occupation:** Councilmember/Business Owner

**Education and Qualifications:**

For better work from Sacramento, vote Lydia Kou.

After eight years in office, I know how government works. I've seen state officials too often forget their communities and what real impact means, and get lost among big donors, special interests, and internal Party politics and endorsements.

They start aspiring more but accomplishing less. The reality is: California has America's highest street homelessness, our housing costs have only risen, and our fourth-grade students read 33<sup>rd</sup> in the nation. Who calls that progress?

Meanwhile property crime soars, our inefficient transit systems demand bailouts, we give fraudsters \$32B in Covid funds, PG&E rates balloon, and state budgets don't balance.

We deserve better. I'll measure us on actual results: not how much tax money we spent, but what it achieved.

I'll prioritize the basics: homelessness, crime, schools, infrastructure and government competence. Homeless encampments are inhumane to those in them, and unfair to others.

I'll get folks off the streets and under roofs the fastest way possible.

I strongly support Prop 36, the "Homelessness, Drug Addiction, and Theft Reduction Act," which closes important holes in our criminal justice system.

I'll actually regulate PG&E—there's no reason PG&E electricity should cost 50% more than our city utility in Palo Alto.

As a lifelong environmentalist, I'll protect our green spaces from bulldozers. And unlike some, I will always support you having a voice about development in your neighborhood.

You deserve better work, not just more work.

Vote Kou. [www.lydiakou.com](http://www.lydiakou.com)

**CANDIDATE STATEMENTS FOR  
JUDGE OF THE SUPERIOR COURT, OFFICE NO. 5**

<b>JAY BOYARSKY</b>	<b>JOHNENE LINDA STEBBINS</b>
<p><b>Occupation:</b> Chief Assistant District Attorney, County of Santa Clara    <b>Age:</b> 58</p> <p><b>Education and Qualifications:</b></p> <p>I am the son of working-class parents. My Mom helped in the school library and my Dad was a union printer. They taught me right from wrong and to treat all people with dignity and respect.</p> <p>As a prosecutor for 30 years, I am passionate about justice, especially protecting children. Early in my career, a horrible man raped a 7-year-old girl. For 8 years, she hid the crimes against her because the attacker threatened her family. I worked hard. But the case was dismissed on a technicality. That was wrong. I worked tirelessly to change the law. "Maricela's Law" made it easier to prosecute rapists and child molesters.</p> <p>I worked my way up and today I am District Attorney Jeff Rosen's second-in-command, running the largest DA's Office in Northern California. I oversee the prosecutions of murderers, rapists, racists, and environmental polluters. Sheriff Bob Jonsen, the San Jose Police Officers' Association, and the Santa Clara County Deputy Sheriffs' Association endorse me because I'm committed to public safety.</p> <p>Endorsed by Planned Parenthood Advocates Mar Monte, BAYMEC, La Raza, and the Mercury News: "He's the person who makes the office run."</p> <p>Endorsed by DA Jeff Rosen, Congresswoman Anna Eshoo, San Jose Mayors Matt Mahan, Sam Liccardo, Supervisors Cindy Chavez, Susan Ellenberg, Otto Lee, Joe Simitian, Legislators Becker, Berman, Cortese, Evan Low, and 29 current and former judges. <a href="http://www.jayboyarsky.com">www.jayboyarsky.com</a></p>	<p><b>Occupation:</b> County of Santa Clara, Deputy District Attorney    <b>Age:</b> 55</p> <p><b>Education and Qualifications:</b></p> <p>Santa Clara prosecutor for 26 years, women's rights advocate, and the choice for public safety and victims' rights organizations. Endorsed by Judge Vincent Chiarello to replace him for Superior Court Judge Seat #5.</p> <p>A Deputy District Attorney, wife and mother of three, and lifelong resident of Santa Clara County, Johnene has prosecuted thousands of cases including homicide, child molestation, sexual assault, domestic violence, and elder abuse. She has dedicated her career to fighting for public safety, championing victims' rights, while embracing fairness, compassion and rehabilitation. Endorsed by All county law enforcement agencies including Deputy Sheriffs, Police Officers' Associations of San Jose, Santa Clara, Los Gatos, Gilroy, Milpitas, Sunnyvale, Morgan Hill, Campbell, Los Altos, Palo Alto, Mountain View and County Corrections; firefighters, judges, community leaders, and public defenders.</p> <p>Johnene is recognized for her steadfast commitment to the prosecution of environmental crimes; Instructs statewide, nationally and internationally on investigations of sexual assault and internet crimes against children.</p> <p>Judge David Cena: "Johnene possesses a deep understanding of the legal system and an unwavering commitment to justice. She will be an outstanding, intelligent and fair judge."</p> <p>Sheriff Charles Gillingham (ret.) "Her track record as a prosecutor is exemplary; Deputy District Attorney Johnene Stebbins consistently demonstrates qualities we need in a judge—intelligence, integrity, and an unshakeable commitment to public safety and fairness." <a href="http://www.johnenelindastebbinsforjudge.org">www.johnenelindastebbinsforjudge.org</a></p>



**CANDIDATE STATEMENTS FOR  
MEMBER, SANTA CLARA COUNTY BOARD OF EDUCATION, TRUSTEE AREA 1**

**GRACE H. MAH**

**JESSICA SPEISER**

**Occupation:** Governing Board Member, Santa Clara County Board of Education, Trustee Area 1

**Education and Qualifications:**

As the longest-sitting Santa Clara County School Board Member, I have valuable institutional experience that is needed, as our newer board members build their knowledge to understand the unique responsibilities of the County Office of Education. For the last 17 years on the Santa Clara County Board of Education, I have fought to expand access to quality preschool, ensure accountability for taxpayer funds, and address inequities in our schools.

I cofounded the Strong Start Coalition, dedicated to increasing preK access for every child in Santa Clara County. As the Board Liaison to the Head Start program (high-quality early education for low-income infants to 4-year-olds), I promote parent engagement in the shared governance of the program.

I support schools that use innovative teaching models to address educational inequity. Dedicated teachers are crucial in not only educating but nurturing our children. Best practices of creatively led schools raise the quality of education for All students.

During this mental health crisis for our youth, we need countywide leadership and experience to continue providing safe and secure schools so, all students can thrive.

Join education leaders Jack O'Connell, Blanca Alverado, Gloria Hom, Ellen Wheeler, and City of San Jose Mayor Matt Mahan to support me on Nov 5. [www.GraceMah2024.org](http://www.GraceMah2024.org)

**Occupation:** Mother, School District Trustee, Community Volunteer

**Education and Qualifications:**

I am running for the County Board of Education because I believe every child in Santa Clara County deserves an opportunity to succeed, regardless of their background.

The demographics that a child is born into should not determine their destiny. Public schools transformed my life. I grew up very low income with an often absent and struggling single mother. My public school was where I found safety and support. This nurturing environment and my determination led to my admission to Wellesley College, and later UC Law SF. My experiences ignited my passion for giving back to the community, guiding my career as an attorney and leader in educational governance.

As a mother of three, recent Los Altos School Board President, and in my life experiences, I have seen the transformative power of education. As your next trustee, I will work to shape public education that serves all students, support teachers with the resources to that end, and make sure that public education in the county is transparent and accessible.

I am endorsed by nearly 200 local community leaders; Congresswoman Anna Eshoo, State Senator Josh Becker, Assemblyman Evan Low, Planned Parenthood Mar Monte, and the California Teachers Association. A vote for me will ensure that everyone has a voice in shaping our educational future.

**CANDIDATE STATEMENTS FOR  
GOVERNING BOARD MEMBER, FOOTHILL-DE ANZA COMMUNITY COLLEGE DISTRICT, TRUSTEE AREA 5**

TERRY GODFREY	FOREST OLAF PETERSON
<p><b>Occupation:</b> Chief Financial and Administrative Officer/Board Trustee <b>Age:</b> 60 <b>Education and Qualifications:</b></p> <p>My experience as a first generation college graduate, educated in California's public schools from kindergarten through BS Math (UC Irvine) and MBA (UCLA), fuels my mission that every student deserves a world-class education and trustees who are dedicated, every day, to breaking down barriers to making that possible. My experiences as Palo Alto School Board President, UC Irvine Foundation Board Trustee, and as a long-term business leader uniquely qualify me for this work.</p> <p>In my first term I plan to address issues related to student housing; transportation; mental health, academic and other student support services; the long-delayed building program; and looming budget issues.</p> <p>On the Palo Alto Unified School District Board, we addressed issues and opportunities related to academics, leadership, safety and finances. I was drama-free, collaborative, transparent and focused on what was best for our students and staff.</p> <p>As Chief Financial and Administrative Officer for Learning Policy Institute, I devote my professional life to an organization that aligns with my personal passion for education. I will bring to the role of Trustee can-do collaboration and decision-making skills honed during 30+ years of corporate and nonprofit work experience.</p> <p>Please join Supervisor Joe Simitian, Foothill-De Anza Community College District Board President Peter Landsberger and Vice President Pearl Cheng in supporting my campaign. I'd be honored by your vote. <a href="http://www.terrygodfrey.org">www.terrygodfrey.org</a>; <a href="https://www.linkedin.com/in/terrygodfrey">linkedin.com/in/terrygodfrey</a></p>	<p><b>Occupation:</b> Engineer <b>Education and Qualifications:</b></p> <p>Twenty-five years ago, I was a concrete laborer with the Laborers' International Union, rebuilding large sections of Interstate 80 and taking winter-semester college courses that eventually led to my Stanford PhD. I now live in Palo Alto with my wife and three kids. As your Trustee, I will focus on apprenticeship education, community access to campus amenities like pools and libraries, and transitions to post-secondary special education programs.</p> <p>My academic, agency, and industry experiences make me uniquely prepared to be your Trustee. As a holder of a two-year Associate degree in public accounting, I understand the value community colleges provide, since following the guaranteed transfer program from community college to the UC system was a springboard for my education and career. My research and teaching over the past decade have focused on the role of workforce tech education, as I led agency efforts to shape positive educational and career outcomes and advancement initiatives throughout the Bay Area.</p> <p>I have been endorsed by a diverse set of current and former parents, community leaders, faith based leaders, small business owners, taxpayers, union officials (including the sponsors of all nine apprenticeship programs at the Foothill-De Anza) and elected officials. I humbly ask for your vote. <a href="http://VoteForest.org">VoteForest.org</a></p>

**CANDIDATE STATEMENTS FOR  
GOVERNING BOARD MEMBER, PALO ALTO UNIFIED SCHOOL DISTRICT**

<b>ROWENA CHIU</b>	<b>NICOLE CHIU-WANG</b>
<p><b>Occupation:</b> Economist/Lawyer/Parent <span style="float: right;"><b>Age:</b> 50</span></p> <p><b>Education and Qualifications:</b></p> <p>I'm running for PAUSD School Board because I care deeply about providing a choice and voice for those who feel underrepresented, as well as a high-quality education for all PAUSD students.</p> <p>With four children in PAUSD (10th Grade at Middle College, 7th Grade at JLS, 4th &amp; 1st Grade at Ohlone), and having served as JLS Connections Board President and Ohlone PTA President, I have both deep knowledge about the complexities and passion for the potential within PAUSD.</p> <p>Moreover, I have both the academic and professional experience to understand the challenges in PAUSD and to make an impact. I have a BA in English Literature, MA in English Literature, MBA in Corporate Finance, Postgraduate Diploma in Law, Legal Practice Course, MSc in International Management For China, and PhD in Anthropology &amp; Culture (incomplete). Additionally, I have worked in the fields of business, economics, law, and management consulting for top corporations such as Accenture, PricewaterhouseCoopers, McKinsey &amp; Company, as well as the World Bank.</p> <p>As a data analyst, I use evidence-based analytics to make decisions that benefit the widest range of stakeholders within the poorest nations in Africa &amp; Asia through my poverty alleviation work.</p> <p>As a lawyer, I use advocacy and analytics to represent my client's interests, whenever complex, difficult and multi-faceted decisions need to be made in a high pressure and high stakes situation.</p> <p>As a parent, I am heavily involved in my children's classrooms: in the past, supporting my toddlers at parent participation preschool; in the present, supporting my oldest child with college admission.</p> <p>As a PTA President, I am heavily involved in the wider school community, bringing together alumni parents, current parents, students and teachers to celebrate key milestones for our school.</p> <p>As a Weinstein Survivor, I am heavily involved in changing law and policy for sexual assault survivors &amp; suicide survivors, especially those experiencing oppression in either gender or race.</p> <p>As a PAUSD Board Member, I will focus on improving outcomes for all students, focusing on:</p> <p>1. Choice/Collaboration/Community: Parents, students, and teachers often feel their choices are stymied and their voices are unheard. I plan to advocate for collaboration &amp; community. 2. Data-Driven Analysis: I will advocate for transparency in budget &amp; decision-making. 3. Diversity, Equity, Inclusion: I seek to represent diverse voices within our community. 4. Mental Health: This crisis has reached epic proportions and must be better addressed.</p> <p><a href="http://www.voterowena.com">www.voterowena.com</a></p>	<p><b>Occupation:</b> Education Nonprofit Executive Director <span style="float: right;"><b>Age:</b> 41</span></p> <p><b>Education and Qualifications:</b></p> <p>Like so many Palo Alto families, I believe in PAUSD—it's why we chose to move here. Both of our children are PAUSD students and we are deeply invested in our community. My personal and professional background, and my belief in public education, motivate me to serve.</p> <p>Endorsed by Congresswoman Anna Eshoo, State Assemblymember Marc Berman, and eight prior and current PAUSD School Board Trustees, I have the experience and skills needed. As an attorney, I understand policy, good governance, and fiduciary responsibility. As an operations strategist, I have managed multimillion dollar budgets. As an entrepreneur, I know what it takes to scale large, operationally complex processes and projects with diverse partners and stakeholders. As a bi-racial woman, I've spent my life building bridges within communities.</p> <p>My non-traditional career path shows me that there is no single checklist to success. I will govern to ensure education that equips our students to adapt and thrive beyond PAUSD, in diverse environments and careers that don't yet exist.</p> <p>I was raised to give back. I left big tech to lead an education nonprofit that works to close the opportunity gap for our most marginalized middle school students and their families, while also providing service learning and leadership opportunities for our high school students. I also serve as the Co-President of the Palo Alto Chinese Parents Club and volunteer and fundraise for the South Palo Alto Food Closet, the Ohlone Farm, and my children's PTAs.</p> <p>My priorities are to:</p> <p>Invest in Early Childhood Education: Equip teachers to meet children of diverse learning styles and needs, including Transitional Kindergarten. Ensure quality, affordable childcare &amp; universal preschool.</p> <p>Innovate the way we educate and measure progress: Expand successful, oversubscribed learning initiatives across the district, like our dual-language immersion and project-based programs. Adopt measures of progress and success considering the whole student and make data-driven decisions to benefit all students.</p> <p>Improve Mental Health: Facilitate community conversations and education to address the culture of stress, and take needed measures to ensure that our integrated mental health services are effective and utilized. Redefine success and provide students with the resources, opportunities and validation to explore and pursue their passions.</p> <p>Earn Trust: Hold myself accountable for open communication &amp; community involvement as essential parts of collaboration, transparency, and trust. This is how we realize the full potential of PAUSD to support all of our students, teachers, families, and staff.</p>

**CANDIDATE STATEMENTS FOR  
GOVERNING BOARD MEMBER, PALO ALTO UNIFIED SCHOOL DISTRICT**

**CHRIS COLOHAN**

**Occupation:** Substitute Teacher, Volunteer, and Stay-at-Home Dad    **Age:** 50  
**Education and Qualifications:**

I am a stay-at-home dad who previously worked as a software engineer and manager with a Ph.D. in computer science. My spouse, Lea, is a Gunn alum and our two kids attend Greene.

I am deeply committed to our School District and our community. I have served as a substitute teacher in every PAUSD school; as President, EVP, and Treasurer of the PTA; and as a representative of Palo Alto Partners in Education (PiE).

I know our school district very well. I've seen the many ways where it works well, and where it can improve. My priorities reflect my desire to keep Palo Alto's schools strong:

**Management**—The job of the school board is to provide oversight to the district and manage the superintendent. To achieve this the board needs to set goals in terms of desired outcomes—and expect the district staff will work hard to achieve those outcomes. I bring multiple years of management experience to the board, overseeing both high performing teams in industry and volunteer teams in the PTA. I know how to dive into data and ask the right questions to learn where changes need to be made. I also have the experience and judgment to know when changes do not need to be made. I will strive to create a stable, supportive environment where teachers can thrive, to the benefit of all children.

**Classroom Teaching**—Great teachers are the most important thing a school district can provide for kids. The way to attract, train, and retain good teachers is by having high quality management that understands how to support great teaching. I've been a sub in nearly every school in the district, and I want to bring my knowledge and experience to the board.

**Budget**—I strongly believe that everyone in the community should be able to understand what is happening and why. Even if you disagree with a decision, it should be clear why that decision was made. Anyone who has worked with me as a PTA treasurer will tell you that I delight in getting the details just right, and presenting thorough and engaging explanations so everyone knows what they are voting for. I plan on bringing this same passion for transparency and clarity to my role on the school board.

I'm ready to serve on our school board.

[www.chris4schoolboard.com](http://www.chris4schoolboard.com)

**ALISON KAMHI**

**Occupation:** Attorney/Parent    **Age:** 43  
**Education and Qualifications:**

I am an engaged parent of two children in PAUSD, an experienced attorney, and a dedicated advocate for safety and opportunity for all children. I've devoted my career to helping our most vulnerable youth and their families, and I bring that devotion to helping all kids achieve their full potential. With a sixth-grader at Greene and a kindergartener at Escondido, I have been a parent in the district for over six years and will be for another thirteen.

I am a graduate of Stanford University and Harvard Law School and currently work at an immigrants' rights non-profit. I understand the nitty-gritty of institutional systems, and I know firsthand that all change starts local. That's why I created communication and resources on gun violence prevention with the Palo Alto PTA Council. Additionally, as a member of the PAUSD Childcare Committee in 2022, I advocated for aftercare placements for all children throughout the district, including low-income and special needs students, and I currently serve on the board of Palo Alto Community Child Care (PACCC). Through my years in leadership, I have deep experience managing large budgets prudently, working with state and local government, and collaborating with stakeholders.

My priorities as PAUSD School Board Member include:

**Academic achievement and equity:** Our schools must serve every student, preparing them for a rapidly changing world and offering opportunities for all children to excel. I am committed to thinking creatively about how to achieve this.

**Safety for all children:** We must invest in mental health and special needs services, strong protocols to address hate speech and bullying, screen use guidelines in school, bike safety, and gun violence prevention. Every child deserves to feel safe and supported.

**Trust and community:** Endorsed by the Palo Alto Educators Association, I know that building strong relationships with parents, teachers, students, and community members is essential.

As our country becomes more polarized and the political discourse becomes increasingly divisive, I am firmly committed to fostering robust and respectful discourse that welcomes a broad array of ideas and encourages community participation. If elected, I will continue to be accessible, transparent, and committed to these priorities and to our community. I am proud to be endorsed by a diverse group of parents, teachers, labor, and community leaders. [AlisonForPAUSD.Com](http://AlisonForPAUSD.Com)

**CANDIDATE STATEMENTS FOR  
GOVERNING BOARD MEMBER, PALO ALTO UNIFIED SCHOOL DISTRICT**

**JOSH SALCMAN**

**Occupation:** Business Executive, Caregiver, Parent

**Age:** 48

**Education and Qualifications:**

Three things define my candidacy:

**Values.**

I am motivated by a deep commitment to educational excellence, community involvement and transparency. Every student, regardless of their background, deserves access to high-quality education, top-tier educators, and the individualized support and resources they need to thrive. I'm dedicated to fostering an environment where all voices are heard and respected, ensuring our schools are places of learning, curiosity, growth and mutual respect.

**Commitment.**

I've dedicated ten years to our schools: volunteering in classrooms, on playgrounds, in teachers' lounges, board rooms, and over Zoom. As a 2nd grade room parent, site councilmember and PTA Treasurer and VP of Fundraising, I've consistently supported our students, teachers, and families. My commitment extends beyond our schools to our entire community, as demonstrated by my work on the Los Altos Hills Emerging Technology Ad Hoc Committee.

**Experience.**

With a B.A. in Biology from Princeton and a Master's in Design from Pratt Institute, I have a lifelong passion for learning and a deep belief in the value of education. I was appointed three times to the educator search and interview committees at Beth Am. I taught reading and math to adults, tutored peers in Calculus and Chemistry, and led two educational startups as founding CEO, with a focus on supporting students in K-12 and higher-ed. I bring critical thinking, creativity, and an empathetic approach to problem-solving, ensuring we build on our strengths and address opportunities for continuous improvement.

I will be a champion for our schools and will drive success. That's why the Palo Alto Educators Association, community leaders, education and child developmental experts, and parents throughout our district support my campaign. Feel free to call or text me directly at 650-667-0770 with questions or feedback.

[www.JoshSalcman.com](http://www.JoshSalcman.com)

**CANDIDATE STATEMENTS FOR  
MEMBER, BOARD OF SUPERVISORS, DISTRICT 5**

<b>SALLY J. LIEBER</b>	<b>MARGARET ABE-KOGA</b>
<p><b>Occupation:</b> Member, California State Board of Equalization</p> <p><b>Education and Qualifications:</b></p> <p>My name is Sally Lieber. I am a corporate-free candidate for the County Board of Supervisors, not accepting funds from PACs or developers.</p> <p>The County is responsible for safety net programs, public health and mental health, protection of open space, foster care, funding affordable housing, and policing and emergency response in unincorporated areas. The County implements state laws and delivers critical services. I have deep experience, having served as a local City Councilmember and Mayor, County Commissioner, Member of the State Assembly, and now represent taxpayers as Chair of the State Board of Equalization. I am the only candidate in this race that has balanced budgets, cut waste and saved vital services, at the local, regional, and state level.</p> <p>I will ensure that we take a holistic approach to reducing homelessness; provide access to flexible, open and comprehensive mental health and drug treatment services; empower people living with disabilities; create affordable housing and childcare; protect open space and expand park lands; and decrease wait time for emergency response. I will fight for fairness for homeowners, renters, and small businesses.</p> <p>My work has earned 100% ratings from Planned Parenthood, Sierra Club California, the California League of Conservation Voters, the Congress of California Seniors, and Equality California. I respectfully ask for your vote.</p>	<p><b>Occupation:</b> City Councilmember/Mother <span style="float: right;"><b>Age:</b> 54</span></p> <p><b>Education and Qualifications:</b></p> <p>Thank you for voting in this consequential election—and please join my coalition of small business owners, Police/Fire, Labor and community in my campaign to represent you as your next Supervisor. I'm humbled to be endorsed by Sheriff Bob Jonsen, District Attorney Jeff Rosen, Deputy Sheriffs, Correctional/Probation Officers, Mountain View/San Jose Police Officers; Santa Clara County, Mountain View, Palo Alto firefighters as the right leader to keep our communities safer/stronger.</p> <p>I'm the daughter of immigrants, working Mom, breast cancer survivor and former small business owner elected as Mountain View's first Asian American woman Mayor and Councilmember two decades ago. I guided my City through the Great Recession, COVID and skyrocketing inflation by maintaining balanced budgets, holding the line on taxes and maintaining excellent bond ratings—and will bring this accountability to the Board of Supervisors. I'm proud to have increased police staffing, improved emergency communications for faster response and established Santa Clara County's Clean Energy Authority.</p> <p>As Supervisor, I'll ensure safe schools/neighborhoods, champion small businesses, demand responsible management of taxpayer dollars and work to reduce homelessness. I'll work hard to ensure your government is accountable and focused on your family's wellbeing. MAK4Supervisor.com.</p>

**CANDIDATE STATEMENTS FOR  
MEMBER, PALO ALTO CITY COUNCIL**

<b>GEORGE LU</b>	<b>CARI TEMPLETON</b>
<p><b>Occupation:</b> Planning and Transportation Commissioner/Product Manager      <b>Age:</b> 32</p> <p><b>Education and Qualifications:</b>                      B.A. Economics, Stanford University                      I am running for a more responsive, livable and vibrant Palo Alto.                      From attending Chinese school as a child at Gunn High to buying my first home, Palo Alto has given me so much over 25 years.                      However, residents deserve an efficient government that listens to their needs. Our status quo has been unresponsive, adding cost and delay to key goals like climate emissions and housing.                      On the Planning and Transportation Commission, I've fought for traffic safety and housing affordability. As a Product Manager, I've built teams to solve global problems from misinformation to violence prevention. As your Councilmember, I will listen to the community and work respectfully with all. Key issues include:                      (Safe Streets) I am committed to a Vision Zero goal of eliminating traffic deaths. We must prioritize infrastructure, education, and traffic enforcement.                      (Community Retail) We need to bring life and energy back to our retail districts. I will cut red tape and prioritize streetscape improvements to fill vacancies.                      (Housing) We need housing to be a dynamic community with young families, seniors, and essential workers. I will prioritize housing production, responsive neighborhood planning, and tenant protections.                      I would be honored to earn your vote. georgeforpaloalto.com</p>	<p><b>Occupation:</b> Program Manager/Planning and Transportation Commissioner      <b>Age:</b> 48</p> <p><b>Education and Qualifications:</b>                      I've called Palo Alto home for nearly 20 years and raised my family here. I earned my master's degree at Stanford University and spent a decade as a program manager in high-tech. Since then, I have dedicated myself to community service: joining nonprofit boards, local and regional groups and City-appointed commissions.                      I spent 6+ years on the Planning and Transportation Commission, promoting pragmatic policies for zoning, safer streets, wildlife protection, and more. I worked to improve the Housing Element, fought for safe and practical train crossings, and delivered a plan to develop the North Ventura site. I also served on Valley Water's Measure S Oversight Committee keeping our creeks safe, clean, and natural. I successfully campaigned for increasing Palo Alto's available funds via the business tax. Most recently I served in the office of State Senator Josh Becker.                      I believe Palo Alto has a bright and thriving future. It will have safer streets for all, a variety of housing options, enhanced restaurants and retail, after-school programs, and entertainment. Our vibrant local economy promotes a connected, inclusive, and tolerant city. Palo Alto has the potential to be all we want and more. Together, we can make a difference by choosing a vision of a flourishing Palo Alto. More at CariForCouncil.Com.</p>
<b>HENRY ETZKOWITZ</b>	<b>KEITH RECKDAHL</b>
<p><b>Occupation:</b> Retired Professor</p> <p><b>Education and Qualifications:</b>                      Henry Etzkowitz, Innovation Scholar, led successful pushback against Oak Creek Apartments rent increases, after 2022 Stanford takeover. His Housing First, ecological restoration, community cohesion agenda prioritizes affordable development at sites with services: Downtown, California Avenue, Stanford Shopping Center; making undeveloped areas urban forests. Henry proposes: 20% of affordable housing to Palo Alto residents' children; Underground Caltrain; Bike paths, habitat gardens above, No land takings! "Ducks Over Planes": Move Airport to Moffett Field, Expand Byxbee Park; Make empty offices living lofts, Industrial Buildings Artists' Lofts; Preserve Eichler neighborhoods; Turn commercial buildings net-zero green; Ban Obtrusive Cell Towers.                      Senior Focus: Rent Cap, No increase after 15 years residency, ¼ rent income limit; Housing complexes with 100 units+, making 20% senior availability.                      "Stanford Fair Share": Ban house purchases; Institute Payment in Lieu of Taxes; Joint Venture 'Town-Gown' Affordable Housing on Shopping Center garages with Intergenerational Community Center—Chinese History Museum, day care, teen canteen, senior dinners, gym, ice-skating rink. Oxford-Like Graduate College with Emeritus Faculty/Retired Professionals Institute, high-table, senior housing set-aside, funded by one-billion-dollar naming rights!                      "This is the Palo Alto I want. Is this the Palo Alto you want?"                      Vote Henry Etzkowitz:                      Make strong voice for Seniors, Renters, Environmentalists, Preservationists</p>	<p><b>Occupation:</b> Aerospace Engineer, Vice Chair, Planning and Transportation Commission      <b>Age:</b> 59</p> <p><b>Education and Qualifications:</b>                      Palo Alto needs smart, sustainable growth, robust public safety, and essential services. I bring over 12 years of proven experience to achieve our goals. I support new housing for all incomes, prioritizing affordable housing for essential workers by building denser in downtowns, El Camino Real, and Stanford Research Park. While serving on Planning and Transportation Commission, now as Vice Chair, I also led the 2022 Measure K campaign to ensure vital funding for affordable housing, public safety, and transit. I've supported renter protections like security deposit limits and relocation assistance for no-cause lease terminations while encouraging new rental housing.                      New amenities must be built to meet our growing needs, so during my 9 years on the Parks and Recreation Commission, twice as Chair, I championed new bathrooms, dog parks, Cubberley renovations, and expanded programs for youth, seniors, and underserved residents.                      We must enhance our retail environment by simplifying zoning, streamlining permitting, and partnering with merchants. I'll prioritize public safety, fully staff Fire and Police departments, maintain strict oversight, and support upgrades for reliable utilities and our leading climate protection plan. We need infrastructure improvements for better traffic, safer walking, and bike-friendly streets. I'm committed to Palo Alto and won't seek higher office. I'd be honored to serve you. www.keithforcouncil.com</p>

**CANDIDATE STATEMENTS FOR  
MEMBER, PALO ALTO CITY COUNCIL**

**KATIE CAUSEY**

**Occupation:** Public Policy Leader—City Commissioner

**Education and Qualifications:**

**My Commitment—**Palo Alto has been my home for over 30 years. I have been devoted to serving this city where I was born and raised, having long supported community efforts, applying the values I learned as a Palo Alto student at Ohlone, JLS and Paly.

**My Education—**As a graduate of The George Washington University my studies focused on intersectional approaches to local public policy.

**My Service—**I'm running after working hands on with Palo Alto seniors and families struggling with the high cost of living in Palo Alto. I've served as a City Commissioner and spent years working in our local housing, transportation, and climate change nonprofits working with city governments to improve their public policy.

**My Supporters—**include over 150 elected officials, community leaders, and Palo Alto neighbors. I'm endorsed by California Attorney General Rob Bonta, Mayor of East Palo Alto Antonio Lopez, Former Palo Alto Principal Susan Charles, Gina Dalma, and the Honorable Sally Lieber.

**My Request—**I humbly ask for your vote, I would be honored to serve.

[www.katiecauseyforcouncil.com](http://www.katiecauseyforcouncil.com) [katiecauseyforcouncil@gmail.com](mailto:katiecauseyforcouncil@gmail.com)

**ANNE W. CRIBBS**

**Occupation:** President/CEO Non Profit Organization

**Education and Qualifications:**

Palo Alto Park and Recreation Commissioner, non-profit CEO, business owner, home owner, renter, Palo Alto City staffer, coach, Stanford University, Foothill College, 1960 Olympian.

I love Palo Alto, my husband and I raised our family here.

I'm running for City Council to breathe new life into our cherished community, invigorate our neighborhoods, and refine how our city fosters innovation and progress.

**Revitalizing Our Neighborhoods.** Our neighborhoods are the backbone of our city. Committed to revitalizing these spaces, I will ensure they are safe and thriving. Improving public parks, enhancing local business districts, and guaranteeing our public services meet the community's current and future needs.

**Restoring Cubberley.** Cubberley holds a special place in our community's heart. We must rebuild Cubberley for today and future generations, enhancing its accessibility for all community members.

**Renovating the City's Project Approval Process.** It is time our city adopts a more streamlined and efficient approach to managing and implementing new projects. Let's prioritize speed, transparency, and adaptability, enabling our city to more quickly and effectively bring forward dynamic and innovative projects that will benefit all residents.

Together we can make these changes happen.

I respectfully ask for your vote. [www.cribbsforcouncil.com](http://www.cribbsforcouncil.com).

**PAT BURT**

**Occupation:** Councilmember, Former Mayor, Former Tech CEO

**Education and Qualifications:**

Palo Alto needs representatives with vision and experience, who uphold our community values and deliver results rather than rhetoric.

Since returning to City Council in 2021 and serving as Mayor in 2022, I led in restoring public safety and community services cut during COVID, increasing renter protections, advancing affordable housing, and ensuring your elected officials respond to community input. Today, Fire and Police staffing are strengthened, renters are better protected, and we have the largest affordable housing pipeline in decades with three projects under construction and six more planned. Our climate protection plan is a national model and the Council has reclaimed its oversight role while increasing our regional influence.

There's more to do: make our government more efficient, fund and build affordable housing, improve all modes of transportation, advance Cubberley and improvements of our downtowns, invest in infrastructure, and maintain our climate protection leadership. I have a proven track record as a consensus builder, solving tough problems as a former Mayor, tech CEO, parent, environmentalist, and regional leader.

Together, we can ensure Palo Alto remains fiscally sound, innovative, and environmentally sustainable—the welcoming, just, vibrant, and inclusive community that we value. I'd be honored to serve you again. [www.patburt.org](http://www.patburt.org)

**GREER STONE**

**Occupation:** Mayor of Palo Alto/Teacher

**Age:** 35

**Education and Qualifications:**

As your representative on the Palo Alto City Council for the past four years, it has been an honor to serve this wonderful community in which I was raised.

During my first term, I've championed several initiatives, including: prioritizing true affordable housing, upgrading our electrical grid, and promoting climate friendly initiatives to combat climate change. I currently serve on regional boards to protect our community from future floods and ensure access to clean, affordable water; my climate & environmental efforts have earned me the endorsement of the Sierra Club.

Most recently, as Mayor, I have formed a youth mental health taskforce, bringing together local and regional experts, as well as concerned students, to recommend policies that will improve the lives of our city's youth. If you honor me with another term on your City Council, I will make this a major focus in my next term. My other priorities will include a renewed focus on affordable housing, climate adaptation and environmental protections, and investing in events and services to promote community.

I'm proud of what we've achieved together, and I believe Palo Alto's best days are ahead. I humbly ask for your vote to continue this important work.



**CANDIDATE STATEMENTS FOR  
MEMBER, PALO ALTO CITY COUNCIL**

**DORIA SUMMA**

**Occupation:** Retired

**Education and Qualifications:**

I am a passionate advocate for Palo Alto and I want to maintain the great quality of life that we enjoy. My husband and I have lived in Palo Alto for 35 years. I am currently a Planning and Transportation Commissioner and former commission chair. I have served on committees to improve city services, write the city's Comprehensive Plan, and revitalize the North Ventura neighborhood. I am also past President of the College Terrace Residents' Association.

I believe that my passion for Palo Alto and my experience make me the best candidate to ensure that all residents and local businesses are given a voice. Palo Alto is now subject to over 100 new state laws that restrict our ability to make many decisions locally. We need to work within those laws to provide affordable housing while preserving habitats, open spaces, parks, libraries and community services. We need to maintain our existing infrastructure and invest in improving safety.

It has been a great honor to serve the citizens of Palo Alto. It will be an even greater honor to serve you as a City Council member. I love Palo Alto and will always represent the interests of residents and local businesses. [doriasumma.com](http://doriasumma.com)

**CITY OF PALO ALTO  
MEASURE D**

To reduce traffic congestion and travel time for transit riders, shall the measure undedicating a 0.33-acre portion of existing parkland in El Camino Park for the purpose of creating a new road primarily for transit vehicles linking the Palo Alto Transit Center with El Camino Real, be adopted?

**Yes**  
**No**

**CITY ATTORNEY'S IMPARTIAL ANALYSIS OF  
MEASURE D**

The Palo Alto City Council has placed this measure on the ballot. If voters approve it, Measure D would amend the Municipal Code to undedicate approximately 0.33 acres of El Camino Park to allow for the construction of a new road connecting the Palo Alto Transit Center and El Camino Real.

**Background:** El Camino Park is on land owned by Stanford University and leased to the City of Palo Alto. The City dedicated El Camino Park as parkland, which means that while under the City's control El Camino Park can be used only for park, playground, recreation or conservation purposes. To undedicate all or a portion of a park, the City Charter requires approval of a majority of voters voting on the measure.

When the El Camino Park lease ends, the land will revert to Stanford and will no longer be dedicated parkland. The lease is currently scheduled to end in June 2042; however, the City and Stanford have signed a "letter of intent" stating that Stanford intends to extend the lease for the portion of the park where the existing playing fields are located to 2052, as part of this new road connector project.

**Measure D:** Measure D would undedicate a specific portion of approximately 0.33 acres of El Camino Park. The area to be undedicated is undeveloped parkland, containing trees, shrubs, utility infrastructure and a pathway. Measure D does not undedicate or make any changes to the playing fields or parking area.

If Measure D is approved by voters, the undedicated 0.33 acres may be used only to construct a new road between the Palo Alto Transit Center and El Camino Real and related improvements. Related improvements may include bus stops, utility infrastructure, landscaping, sidewalks, bicycle paths, safety infrastructure, parking spaces, lighting, signage and wayfinding, and parking restrictions. The new road will be a shorter direct route for buses, shuttles, and other transit vehicles travelling between El Camino Real and the Transit Center. The proposed project may also include improvements for pedestrians and bicyclists. Measure D does not approve a specific design or funding for the road or related improvements.

Measure D requires approval by a simple majority of voters voting on the measure.

A "Yes" vote will undedicate approximately 0.33 acres of El Camino Park and this area will no longer be restricted to park, playground, recreation or conservation purposes. This area can only be used to construct a new road between the Palo Alto Transit Center and El Camino Real and related improvements.

**CITY ATTORNEY'S IMPARTIAL ANALYSIS OF  
MEASURE D-Continued**

A "No" vote means that the measure will not go into effect. While under the City's control, El Camino Park will remain with its existing boundaries and can only be used for park, playground, recreation or conservation purposes.

Molly Stump  
City Attorney

## COMPLETE TEXT OF MEASURE D

Ordinance No. \_\_\_\_

Ordinance of the Council of the City of Palo Alto Amending the Area Dedicated as El Camino Park to Discontinue the Park Use of Approximately 0.33 Acres

The People of the City of Palo Alto do ordain as follows:

**SECTION 1.** Exhibit A-19 of Title 22 (Parks) of the Palo Alto Municipal Code is hereby amended to read as follows (new text underlined):

### EXHIBIT A-19 LEGAL DESCRIPTION EL CAMINO PARK

Beginning at the most northerly corner of that certain 1.194 acre parcel of land described in that certain sublease between the City of Palo Alto and Southern Pacific Railroad Company, dated October 2, 1939; thence S. 17° 13' 57" E. along the westerly line of said parcel 143.13 feet; thence S. 51° 41' 59" E. 421.31 feet; thence northeasterly along a tangent curve to the left, having a radius of 13.64 feet, through a central angle of 90 00' for an arc length of 21.42 feet to a point of reverse curve; thence southeasterly along a curve to the right, having a radius of 13.64 feet, through a central angle of 90° 00', for an arc length of 21.42 feet; thence S. 51° 41' 59" E. 122.41 feet; thence southerly along a tangent curve to the right, having a radius of 75 feet, through a central angle of 87° 29' 32", for an arc length of 114.53 feet, to a point of reverse curve; thence southerly along a tangent curve to the left, having a radius of 300 feet, to a point of reverse curve; thence southerly along a tangent curve to the left, having a radius of 300 feet, to a point of compound curve; thence continuing southerly along a tangent curve to the left, having a radius of 68 feet, through a central angle of 20° 03' 52" for an arc length of 23.81 feet, to a point of reverse curve; thence southwestery, along a reverse curve to the right having a radius of 33.40 feet, through a central angle of 77° 52' 04", for an arc length of 45.39 feet, to a non-tangent point on the northeasterly line of El Camino Real; thence northwestery, along said northeasterly line, the following courses and distances: N. 51° 13' 12" W. 566.52 feet; N. 42° 20' 20" W. 80.45 feet; along a curve to the left, having a radius of 1333 feet through a central angle of 8° 24' 00", for an arc length of 195.43 feet; N. 51° 08' W. 68.39 feet; along a tangent curve to the right, having a radius of 900 feet, through a central angle of 11° 08' 21", for an arc length of 174.97 feet; N. 39° 59' 39" W. 317.82 feet; along a tangent curve to the left, having a radius of 72 feet, through a central angle of 73° 09' 21", for an arc length of 91.93 feet; N. 45° 58' 59" W. 436.48 feet; N. 41° 16' 13" W. 151.00 feet; along a curve to the right, having a radius of 102 feet, through a central angle of 16° 19' 30", for an arc length of 29.06 feet, to a point of compound curve, along a curve to the right, having a radius of 12 feet, through a central angle of 90° 08' 53", for an arc length of 18.88 feet; N. 31° 10' 38" W. 85.53 feet; N. 51° 31' 10" W. 123.49 feet; N. 49° 31' 31" W. 69.11 feet to a point in the centerline of San Francisquito Creek; thence leaving said northeasterly line of El Camino Real, and running along the centerline of said creek S. 85° 56' 59" E. 164.52 feet and N. 62° 31' 01" E. 77.22 feet, to a point on the southwestery line of the Southern Pacific right-of-way; thence southeasterly along the southwestery line S. 51° 35' 10" E. 7.93 feet; S. 51° 41' 59" E. 797.87 feet and S. 46° 56' 10" E. 602.08 feet; thence S. 38° 18' 01" W. 60.00 feet to the point of beginning. Excepting therefrom the following described portion of Palo Alto Avenue: Beginning at the northerly terminus of the above described as "having a radius of 12 feet, through a central angle of 90° 08' 53", for an arc length of 18.88 feet"; thence easterly along a compound curve to the right, having a radius of 182 feet, through a central angle of 19° 27' 55", an arc length of 61.83 feet; thence N. 81° 46' 56" E. 59.63 feet; thence N. 84° 40' 59" W. along

## COMPLETE TEXT OF MEASURE D-Continued

said right-of-way line 86.96 feet; thence S. 84° 40' 05" W. 192.23 feet; thence westerly along a curve to the right, having a radius of 382 feet, through a central angle of 7° 50' 24", an arc distance of 52.27 feet; thence S. 31° 10' 38" E. 85.53 feet to the point of beginning. Also excepting therefrom that portion thereof described in Resolution No. 5802 of the City of Palo Alto recorded July 16, 1980 in Book F442 of Official Records at Page 707, records of Santa Clara County, California. Also excepting therefrom that certain 0.551 acre parcel described as follows: Commencing at the intersection of the southwestery line of the Southern Pacific Railroad Company's right-of-way, 230 feet in width, (as described in that certain easement of Leland Stanford to the Southern Pacific Railroad Company, dated November 23, 1892, and recorded October 28, 1915, in Volume 435 of Deeds at page 244, Santa Clara County Records, in which the bearing of said line is called North 51 28' West, which is also the southwestery line of that certain easement (Palo Alto Agreement No. 224) granted by the Southern Pacific Railroad Company to the City of Palo Alto by Agreement dated October 2, 1939, and recorded November 27, 1939, in Book 954 of Official Records, page 567, Santa Clara County Records), with the center line of University Avenue produced southwestery, as said University Avenue exists 75 feet in width (said intersection being the most easterly point of Parcel 1 as described in that certain lease of the Board of Trustees of Leland Stanford Junior University of the City of Palo Alto (Palo Alto Lease No. 3) dated June 10, 1915, and recorded by Stanford University on September 23, 1915, in Vol. P of Leases at page 333 et seq., Santa Clara County Records, in which the bearing of said line is called North 51 45' West); thence North 51 45' West along said southwestery line a distance of 467.50 feet to the intersection of said line of right-of-way with the center line of Lytton Avenue (prolonged); a distance of 81.00 feet to a point on the southwestery most line of Parcel No. 2, City of Palo Alto Agreement No. 46, dated October 2, 1939, and recorded October 30, 1939, in Book 951 of Official Records, page 580, Santa Clara County Records, which point is the true point of commencement; thence South 51 45' East, along said southwesterymost line, a distance of 25.00 feet; thence South 38 15' West a distance of 120.00 feet; thence North 51 45' West a distance of 200.00 feet; thence North 38 15' East a distance of 120.00 feet to a point on the above mentioned southwesterymost line of Parcel No. 2; thence South 51 45' East a distance of 175.00 feet along said line to the true point of commencement.

SAVE AND EXCEPT THE FOLLOWING DESCRIBED PORTION THEREOF DISCONTINUED FOR PARK PURPOSES PURSUANT TO A VOTE OF THE PEOPLE, AS CONFIRMED BY ORDINANCE NO. :

Real property in the City of Palo Alto, County of Santa Clara, State of California, described as follows:

Being a portion of Park Parcel 1, as said Parcel 1 is described in that certain document, recorded on September 6, 2012, as Document 21840095, Official Records of Santa Clara County, more particularly described as follows:

COMMENCING at the most westerly corner of Palo Alto Station Grounds, as said Station Grounds are described in that certain easement from Leland Stanford to the Southern Pacific Railroad Company, dated November 23, 1892 and recorded October 28, 1915 in Volume 435 of Deeds at Page 244, Official Records of Santa Clara County, said point being marked by a found 3/4" iron pipe with wood plug and tack;

**COMPLETE TEXT OF MEASURE D-Continued**

Thence along the northeasterly line of said Park Parcel, South 16°12'28" East, 56.48 feet to the POINT OF BEGINNING;

Thence leaving said point and continuing along said northeasterly line, South 16°12'28" East, 86.65 feet to an angle point in said northeasterly line;

Thence along said northeasterly line, South 50°40'30" East, 4.34 feet;

Thence leaving said northeasterly line, South 34°32'43" West, 24.21 feet to the beginning of a tangent curve to the right, having a radius of 273.00 feet;

Thence southwesterly along said curve, through a central angle of 09°40'14", for an arc length of 46.08 feet;

Thence South 44°12'57" West, 49.45 feet, to the beginning of a tangent curve to the left, having a radius of 49.50 feet;

Thence southerly along said curve, through a central angle of 62°46'25", for an arc length of 54.23 feet to the northeasterly line of El Camino Real (State Highway 82);

Thence northwesterly along said northeasterly line, North 41°18'51" West, 2.64 feet; to the beginning of a non-tangent curve, concave to the southwest, having a radius of 1,333.00 feet, with a radial line that bears North 48°17'29" East;

Thence continuing along said northeasterly line and northwesterly along said curve, through a central angle of 04°28'38", for an arc length of 104.17 feet;

Thence leaving said northeasterly line, North 44°14'48" East, 87.93 feet; to the beginning of a tangent curve to the right, having a radius of 260.50 feet;

Thence northeasterly along said curve, through a central angle of 04°48'43", for an arc length of 21.88 feet;

Thence North 49°03'31" East, 59.71 feet, to the beginning of a tangent curve to the left, having a radius of 19.50 feet;

Thence northerly along said curve, through a central angle of 66°09'32", for an arc length of 22.52 feet; Thence North 29°22'27" East, 14.50 feet to the POINT OF BEGINNING.

Containing an area of 13,960 square feet, more or less.

**SECTION 2.** The area being discontinued for park purposes in Section 1 of this Ordinance is based on the legal survey attached as Exhibit 1.

**SECTION 3.** The area being undedicated as parkland by this Ordinance may only be used to construct a road linking the adjacent Palo Alto Transit Center with El Camino Real and related improvements, such as but not limited to: bus stops, utility infrastructure, landscaping, sidewalks, bicycle paths, safety infrastructure, parking spaces, lighting, signage and wayfinding, parking restrictions, and any improvement otherwise permitted in dedicated parkland (including those permitted after adoption of an ordinance).

**COMPLETE TEXT OF MEASURE D-Continued**

**SECTION 4.** The City Council finds this proposed transit connector project exempt from the California Environmental Quality Act (CEQA). The proposed project comes within the statutory exemption for "facility extensions not to exceed four miles in length which are required for the transfer of passengers from or to exclusive public mass transit guideway or busway public transit services." Pub. Res. Code § 21080(b)(12). Due to its fixed location, Caltrain qualifies as an "exclusive public mass transit guideway" service. The proposed project would extend the existing transit center facility by approximately 210 feet, through the intersection of Quarry Road and El Camino Real, to facilitate the transfer of passengers to Caltrain, among other public transit services.

**SECTION 5.** Effective Date. This ordinance shall be effective only if approved by a majority of the voters and shall go into effect immediately after the vote is declared and this ordinance is adopted by the City Council.

**SECTION 6.** Execution. The Mayor is hereby authorized to attest to the adoption of this Ordinance by the voters of the City by signing where indicated below.

I hereby certify that the foregoing Ordinance was PASSED, APPROVED by the People of the City of Palo Alto voting in the election set on November 5, 2024 and ADOPTED by the City Council pursuant to California Government Code section 38451 as incorporated into Appendix A to the Charter of the City of Palo Alto.

ATTEST:

\_\_\_\_\_  
City Clerk

\_\_\_\_\_  
Mayor

APPROVED AS TO FORM:

APPROVED:

\_\_\_\_\_  
Assistant City Attorney

\_\_\_\_\_  
City Manager

\_\_\_\_\_  
Director of Community Services

\_\_\_\_\_  
Chief Transportation Official

**COMPLETE TEXT OF MEASURE D-Continued**

Exhibit 1



**EXHIBIT "B"**  
Legal Description

March 28, 2023  
BKF No. 20240028  
Page 1 of 2

**PARK DISCONTINUANCE AREA**  
A Portion of El Camino Park, Palo Alto, CA

Real property in the City of Palo Alto, County of Santa Clara, State of California, described as follows:

Being a portion of Park Parcel 1, as said Parcel 1 is described in that certain document, recorded on September 6, 2012, as Document 21840095, Official Records of Santa Clara County, more particularly described as follows:

**COMMENCING** at the most westerly corner of Palo Alto Station Grounds, as said Station Grounds are described in that certain easement from Leland Stanford to the Southern Pacific Railroad Company, dated November 23, 1892 and recorded October 28, 1915 in Volume 435 of Deeds at Page 244, Official Records of Santa Clara County, said point being marked by a found 3/4" iron pipe with wood plug and tack;

Thence along the northeasterly line of said Park Parcel, South 16°12'28" East, 56.48 feet to the **POINT OF BEGINNING**;

Thence leaving said point and continuing along said northeasterly line, South 16°12'28" East, 86.65 feet to an angle point in said northeasterly line;

Thence along said northeasterly line, South 50°40'30" East, 4.34 feet;

Thence leaving said northeasterly line, South 34°32'43" West, 24.21 feet to the beginning of a tangent curve to the right, having a radius of 273.00 feet;

Thence southwesterly along said curve, through a central angle of 09°40'14", for an arc length of 46.08 feet;

Thence South 44°12'57" West, 49.45 feet, to the beginning of a tangent curve to the left, having a radius of 49.50 feet;

Thence southerly along said curve, through a central angle of 62°46'25", for an arc length of 54.23 feet to the northeasterly line of El Camino Real (State Highway 82);

Thence northwesterly along said northeasterly line, North 41°18'51" West, 2.64 feet; to the beginning of a non-tangent curve, concave to the southwest, having a radius of 1,333.00 feet, with a radial line that bears North 48°17'29" East;

Thence continuing along said northeasterly line and northwesterly along said curve, through a central angle of 04°28'38", for an arc length of 104.17 feet;

Thence leaving said northeasterly line, North 44°14'48" East, 87.93 feet; to the beginning of a tangent curve to the right, having a radius of 260.50 feet;

**COMPLETE TEXT OF MEASURE D-Continued**

Thence northeasterly along said curve, through a central angle of 04°48'43", for an arc length of 21.88 feet;

Thence North 49°03'31" East, 59.71 feet, to the beginning of a tangent curve to the left, having a radius of 19.50 feet;

Thence northerly along said curve, through a central angle of 66°09'32", for an arc length of 22.52 feet;

Thence North 29°22'27" East, 14.50 feet to the **POINT OF BEGINNING**.

Containing an area of 13,960 square feet, more or less.

**EXHIBIT "B"**  
Legal Description  
Page 2 of 2

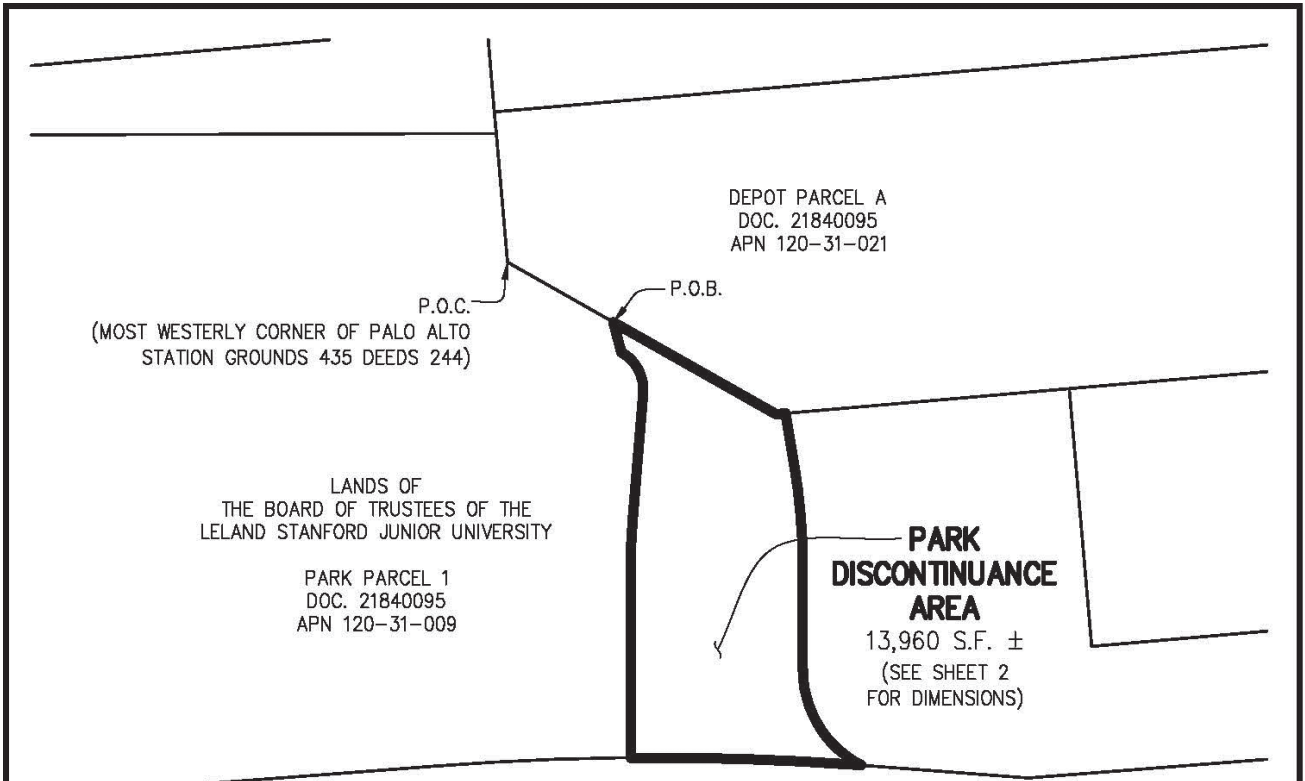
**As shown on plat attached hereto and by this reference made a part hereof.**

Christopher Cassera  
P.L.S. No. 9781



Date 3/28/2024

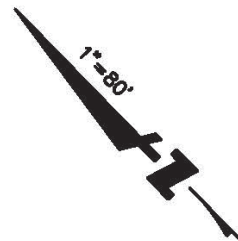
COMPLETE TEXT OF MEASURE D-Continued



**EL CAMINO REAL**  
(STATE HIGHWAY 82)



QUARRY ROAD



**LEGEND**

APN ASSESSOR'S PARCEL NUMBER  
PER ROLL YEAR 2023-24  
P.O.B. POINT OF BEGINNING  
P.O.C. POINT OF COMMENCEMENT  
SQ.FT. SQUARE FEET

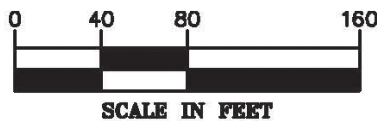
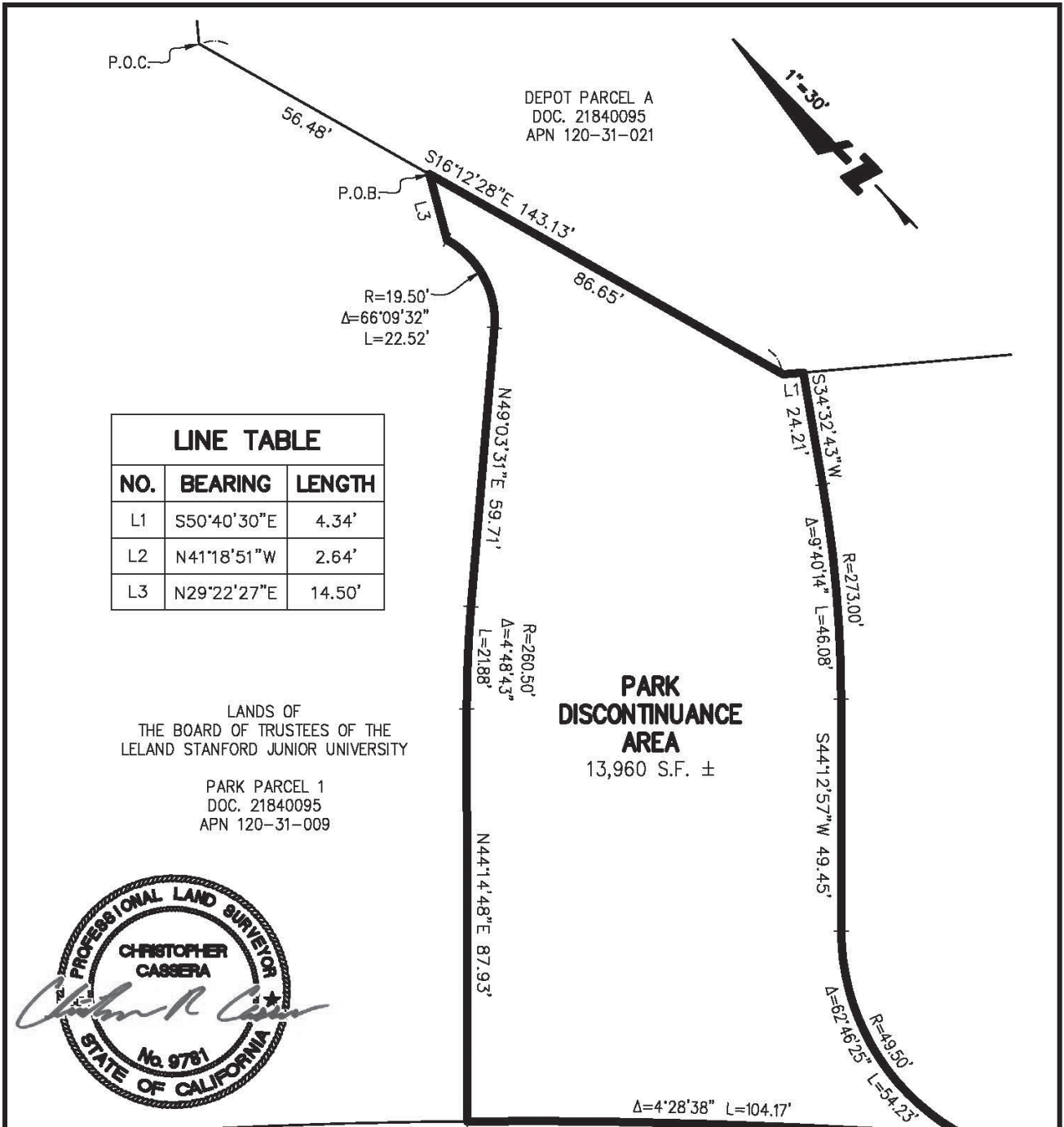


EXHIBIT "B"  
PLAT TO ACCOMPANY  
LEGAL DESCRIPTION

**BKF**  
1730 N. FIRST STREET  
SUITE 600  
SAN JOSE, CA 95112  
(408) 467-9100  
www.bkf.com

SUBJECT **PARK DISCONTINUANCE AREA**  
**A PORTION OF EL CAMINO PARK, PALO ALTO, CA**  
JOB NO. 20240028  
BY HJP APPR. CASC DATE 03-28-2024  
1 OF 2

COMPLETE TEXT OF MEASURE D-Continued



LINE TABLE		
NO.	BEARING	LENGTH
L1	S50°40'30"E	4.34'
L2	N41°18'51"W	2.64'
L3	N29°22'27"E	14.50'

LANDS OF  
THE BOARD OF TRUSTEES OF THE  
LELAND STANFORD JUNIOR UNIVERSITY

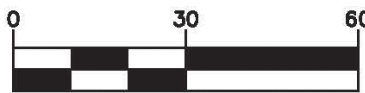
PARK PARCEL 1  
DOC. 21840095  
APN 120-31-009



**LEGEND**

- APN ASSESSOR'S PARCEL NUMBER PER ROLL YEAR 2023-24
- P.O.B. POINT OF BEGINNING
- P.O.C. POINT OF COMMENCEMENT
- (R) RADIAL BEARING
- S.F. SQUARE FEET

**EL CAMINO REAL**  
(STATE HIGHWAY 82)



SCALE IN FEET

EXHIBIT "B"  
PLAT TO ACCOMPANY  
LEGAL DESCRIPTION

**BKF**  
1730 N. FIRST STREET  
SUITE 600  
SAN JOSE, CA 95112  
(408) 467-9100  
www.bkf.com

SUBJECT **PARK DISCONTINUANCE AREA**  
**A PORTION OF EL CAMINO PARK, PALO ALTO, CA**  
JOB NO. 20240028  
BY HJP APPR. CASC DATE 03-28-2024  
2 OF 2

## ARGUMENT IN FAVOR OF MEASURE D

Every so often, important projects are worthy of overwhelming support. The Quarry Road Connection Project is such a project. It will transform the currently congested Palo Alto Transit Center (PATC)—**enhancing transit efficiency, reducing traffic congestion, improving safety and convenience for cyclists and pedestrians, and benefitting commuters**. To create this transitway, one-third of an acre of underutilized parkland at El Camino Park must be undedicated.

This project will extend Quarry Road and connect PATC directly to El Camino Real (ECR), **allowing buses and shuttles to enter and exit the Transit Center directly from El Camino**. This will cut travel times by 5-8 minutes, boost the PATC's operational efficiency, and ease congestion by increasing transit use and reducing the number of buses on University Avenue.

**Pedestrians and cyclists will also benefit significantly.** The project will create safer, more convenient crossings at the Quarry Road-ECR intersection. This will enhance access to recreational facilities and promote sustainable transportation options by better connecting the park with bike and pedestrian networks.

Moreover, the Quarry Road Connection will activate an underutilized section of parkland, transforming it into a functional space with improved landscaping and connectivity. This will deliver better access to El Camino Park and the Transit Center for Palo Alto residents and workers.

We are proud to champion this project, which aligns with the 2030 Palo Alto Comprehensive Plan goals and has garnered strong backing from regional partners, including Caltrain, VTA, MTC, AC Transit, SamTrans and the Silicon Valley Bike Coalition. Most of the project funding is already secured and the project promises substantial benefits without cost to local taxpayers.

By voting YES, you are endorsing a forward-thinking investment in our City's infrastructure, **enhancing access, mobility, safety, and sustainability for our community**.

Learn more about the Quarry Road Connection Project at:  
<https://www.cityofpaloalto.org/transitconnection>

Pat Burt  
Council Member

Greer Stone  
Mayor

**NO ARGUMENT AGAINST MEASURE D WAS SUBMITTED**





**The County of Santa Clara Registrar of Voters has modernized voting and provides voters with greater flexibility and convenience.**

Commencing with the March 3, 2020 Presidential Primary Election ALL Santa Clara County registered voters are mailed a Vote by Mail Ballot. Inactive voters will not be mailed a Vote by Mail Ballot unless they update their voter registration or contact the Registrar of Voters' Office.

**THE CHOICE IS YOURS**

**Vote by Mail**

Once completed, you may choose to return your ballot by using any of the following options:

- ✓ FREE Postage Paid Return Envelope
- ✓ ANY Official Ballot Drop Box location countywide - a list of locations is included in this guide
- ✓ ANY Santa Clara County Vote Center - a list of locations is included in this guide

**Vote in Person at Vote Centers**

Vote using your Vote by Mail Ballot or vote in person at any Vote Center location within the County of Santa Clara. Vote Centers are universal polling places and will be open several days. Vote Centers offer more services:

- ✓ Accessible voting
- ✓ Ballot marking devices
- ✓ Drop off your ballot
- ✓ Receive a replacement ballot
- ✓ Register to vote or update registration information through Election Day
- ✓ Language assistance
- ✓ Election materials

**Voter's Choice Act Implementation**

The Voter's Choice Act (VCA) is a law passed by the California State Legislature in 2016. The VCA was implemented successfully in five counties during the 2018 elections. A total of 29 counties in California are currently conducting elections under the VCA model.

For more information, please call toll free: (866) 430-VOTE (8683) or email: [voterschoice@rov.sccgov.org](mailto:voterschoice@rov.sccgov.org)

# Ballot Drop Box Locations

**24 Hour Official Ballot Drop Box – October 7 – November 5, 2024 until 8 p.m. Election Day**

**Registrar of Voters schedule to collect ballots from drop boxes:**

**October 7 – October 18, 2024: Monday, Wednesday, and Friday**

**October 21 – November 5, 2024: Daily**

## LOCATIONS ARE SUBJECT TO CHANGE

**Please visit our website [www.sccvote.org](http://www.sccvote.org) to confirm that you are using the most current list.**

Location	Address	City
Registrar of Voters (Near the Flagpole)	1555 Berger Drive	San Jose, CA 95112
Alviso Branch Library (Outside Drop Box)	5050 North First Street	Alviso, CA 95002
Campbell City Hall (Outside Drop Box)	70 North First Street	Campbell, CA 95008
Campbell Express Library (Campbell Avenue Parking Lot)	1 West Campbell Avenue E46	Campbell, CA 95008
Westmont High School (Outside Drop Box)	4805 Westmont Avenue	Campbell, CA 95008
Cupertino City Hall (Outside Drop Box)	10300 Torre Avenue	Cupertino, CA 95014
Cupertino Library (Outside Drop Box)	10800 Torre Avenue	Cupertino, CA 95014
De Anza College (RSS Building @ Parking Lot A1)	21250 Stevens Creek Boulevard	Cupertino, CA 95014
Quinlan Community Center (Outside Drop Box)	10185 North Stelling Road	Cupertino, CA 95014
Gavilan College (@ Student Center)	5055 Santa Teresa Boulevard	Gilroy, CA 95020
Gilroy City Hall (Outside Drop Box)	7351 Rosanna Street	Gilroy, CA 95020
Gilroy Library (Outside Drop Box)	350 West Sixth Street	Gilroy, CA 95020
Valley Health Center Gilroy (Outside Drop Box)	7475 Camino Arroyo Drive	Gilroy, CA 95020
Rod Kelley Elementary School (Outside Drop Box)	8755 Kern Avenue	Gilroy, CA 95020
Foothill College (@ Lot 8 Student Drop Off)	12345 El Monte Road	Los Altos Hills, CA 94022
Los Altos Hills Town Hall (Outside Drop Box)	26379 Fremont Road	Los Altos Hills, CA 94022
Los Altos City Hall (Outside Drop Box)	1 North San Antonio Road	Los Altos, CA 94022
Los Altos Library (Outside Drop Box)	13 South San Antonio Road	Los Altos, CA 94022
Woodland Branch Library (Outside Drop Box)	1975 Grant Road	Los Altos, CA 94024
Los Gatos Public Library (Outside Drop Box)	100 Villa Avenue	Los Gatos, CA 95030
Los Gatos Town Hall (Outside Drop Box)	110 East Main Street	Los Gatos, CA 95030
Milpitas City Hall (Outside Drop Box)	455 East Calaveras Boulevard	Milpitas, CA 95035
Milpitas Library (Outside Drop Box)	160 North Main Street	Milpitas, CA 95035
Milpitas Unified School District	1331 East Calaveras Boulevard	Milpitas, CA 95035
Monte Sereno City Hall (Outside Drop Box)	18041 Saratoga-Los Gatos Road	Monte Sereno, CA 95030
Morgan Hill City Hall (Outside Drop Box)	17575 Peak Avenue	Morgan Hill, CA 95037
Morgan Hill Library (Outside Drop Box)	660 West Main Avenue	Morgan Hill, CA 95037
Morgan Hill Unified School District (Outside Drop Box)	15600 Concord Circle	Morgan Hill, CA 95037
Nordstrom Elementary School (Outside Drop Box)	1425 East Dunne Avenue	Morgan Hill, CA 95037
VTA Park and Ride - Morgan Hill (Outside Drop Box)	17300 Depot Street	Morgan Hill, CA 95037
Mountain View City Hall (Outside Drop Box)	500 Castro Street	Mountain View, CA 94041
Mountain View Public Library (Outside Drop Box)	585 Franklin Street	Mountain View, CA 94041
Computer History Museum (Outside Drop Box)	1401 North Shoreline Boulevard	Mountain View, CA 94043

**All Ballot Drop Box Locations are accessible.**



## Ballot Drop Box Locations

Location	Address	City
Mountain View Public Works (Sand Bag Entrance - Outside Drop Box)	234 North Whisman Road	Mountain View, CA 94043
Palo Alto City Hall (Outside Drop Box)	250 Hamilton Avenue	Palo Alto, CA 94301
Palo Alto High School (Outside Drop Box)	50 Embarcadero Road	Palo Alto, CA 94301
Mitchell Park Library (Outside Drop Box)	3700 Middlefield Road	Palo Alto, CA 94303
Rinconada Branch Library (Outside Drop Box)	1213 Newell Road	Palo Alto, CA 94303
Biblioteca Latinoamericana Branch Library (Outside Drop Box)	921 South First Street	San Jose, CA 95110
Santa Clara County Civic Center – West Wing (Outside Drop Box)	70 West Hedding Street	San Jose, CA 95110
CalTrain San Jose Diridon Station (Outside Drop Box)	65 Cahill Street	San Jose, CA 95110
Captain Jason M. Dahl Elementary School (Outside Drop Box)	3200 Water Street	San Jose, CA 95111
Edenvale Branch Library (Outside Drop Box)	101 East Branham Lane	San Jose, CA 95111
Edenvale Community Center (Outside Drop Box)	330 East Branham Lane	San Jose, CA 95111
Seven Trees Branch Library (Outside Drop Box)	3590 Cas Drive	San Jose, CA 95111
Tully Community Branch Library (Outside Drop Box)	880 Tully Road	San Jose, CA 95111
Franklin-McKinley School District (Outside Drop Box)	645 Wool Creek Drive	San Jose, CA 95112
Martin Luther King Jr. Library (Outside Drop Box)	150 East San Fernando Street	San Jose, CA 95112
San Jose State University (@ Dudley Hall)	1 Washington Square	San Jose, CA 95112
San Jose State University (The Villages)	1 Washington Square	San Jose, CA 95112
Joyce Ellington Branch Library (Outside Drop Box)	491 East Empire Street	San Jose, CA 95112
San Jose City Hall (@ E. Santa Clara St. & S. 4th St.)	200 East Santa Clara Street	San Jose, CA 95113
SAP Center at San Jose (West Santa Clara St and Barack Obama Blvd)	525 West Santa Clara Street	San Jose, CA 95113
SAP Center at San Jose (West St John and Montgomery)	525 West Santa Clara Street	San Jose, CA 95113
Mayfair Community Center (Outside Drop Box)	2039 Kammerer Avenue	San Jose, CA 95116
East San Jose Carnegie Library (Outside Drop Box)	1102 East Santa Clara Street	San Jose, CA 95116
West Valley Branch Library (Outside Drop Box)	1243 San Tomas Aquino Road	San Jose, CA 95117
Vineland Branch Library (Outside Drop Box)	1450 Blossom Hill Road	San Jose, CA 95118
San Andreas Regional Center (Outside Drop Box)	6203 San Ignacio Avenue	San Jose, CA 95119
VTA Park and Ride – Santa Teresa Station (Outside Drop Box)	Santa Teresa Avenue @ Miyuki Drive	San Jose, CA 95119
Almaden Branch Library (Outside Drop Box)	6445 Camden Avenue	San Jose, CA 95120
Almaden Neighborhood Church (Outside Drop Box)	19550 McKean Road	San Jose, CA 95120
Evergreen Branch Library (Outside Drop Box)	2635 Aborn Road	San Jose, CA 95121
Eastridge Mall (Entrance C) (Outside Drop Box)	2200 Eastridge Loop	San Jose, CA 95122
Hillview Branch Library (Outside Drop Box)	1600 Hopkins Drive	San Jose, CA 95122
South Valley YMCA (Outside Drop Box)	5632 Santa Teresa Boulevard	San Jose, CA 95123
Southside Community Center (Outside Drop Box)	5585 Cottle Road	San Jose, CA 95123
Cambrian School District (Outside Drop Box)	4115 Jacksol Drive	San Jose, CA 95124
Campbell Union High School District (Outside Drop Box)	3235 Union Avenue	San Jose, CA 95124

**All Ballot Drop Box Locations are accessible.**



## Ballot Drop Box Locations

Location	Address	City
Union Elementary School District (Outside Drop Box)	5175 Union Avenue	San Jose, CA 95124
Hammer Montessori at Galarza Elementary School (Outside Drop Box)	1610 Bird Avenue	San Jose, CA 95125
Willow Glen Branch Library (Outside Drop Box)	1157 Minnesota Avenue	San Jose, CA 95125
Rose Garden Branch Library (Outside Drop Box)	1580 Naglee Avenue	San Jose, CA 95126
Alum Rock Union School District (Outside Drop Box)	2930 Gay Avenue	San Jose, CA 95127
Dr Roberto Cruz Library (Outside Drop Box)	3090 Alum Rock Avenue	San Jose, CA 95127
San Jose City College (@ Student Center)	2100 Moorpark Avenue	San Jose, CA 95128
Valley Medical Center Valley Specialty Center (Outside Drop Box)	751 South Bascom Avenue	San Jose, CA 95128
Forest Hill Elementary School (Outside Drop Box)	4450 McCoy Avenue	San Jose, CA 95130
Moreland School District (Outside Drop Box)	4711 Campbell Avenue	San Jose, CA 95130
Brooktree Elementary School (Outside Drop Box)	1781 Olivetree Drive	San Jose, CA 95131
Orchard School District (Outside Drop Box)	921 Fox Lane	San Jose, CA 95131
Berryessa Branch Library (Outside Drop Box)	3355 Noble Avenue	San Jose, CA 95132
VTA Park and Ride – Hostetter Station (Outside Drop Box)	North Capitol Avenue @ Camino Del Rey	San Jose, CA 95132
Educational Branch Library (Outside Drop Box)	1772 Educational Park Drive	San Jose, CA 95133
County of Santa Clara Records Office (Outside Drop Box)	110 W. Tasman Drive	San Jose, CA 95134
Evergreen Valley College (@ Staff Parking Lot 7)	3095 Yerba Buena Road	San Jose, CA 95135
Village Square Branch Library (Outside Drop Box)	4001 Evergreen Village Square	San Jose, CA 95135
Pearl Avenue Branch Library (Outside Drop Box)	4270 Pearl Avenue	San Jose, CA 95136
VTA Park and Ride – Capitol Expressway (Outside Drop Box)	West Capitol Expressway @ Highway 87	San Jose, CA 95136
Evergreen Valley High School (Outside Drop Box)	3300 Quimby Road	San Jose, CA 95148
Mount Pleasant School District (Outside Drop Box)	3434 Marten Avenue	San Jose, CA 95148
Santa Clara City Hall (Outside Drop Box)	1500 Warburton Avenue	Santa Clara, CA 95050
Mission Branch Library (Outside Drop Box)	1098 Lexington St	Santa Clara, CA 95050
Briarwood Elementary School (Outside Drop Box)	1930 Townsend Avenue	Santa Clara, CA 95051
Central Park Branch Library (Outside Drop Box)	2635 Homestead Road	Santa Clara, CA 95051
Kona Kai Swim Club (Outside Drop Box)	680 Hubbard Avenue	Santa Clara, CA 95051
Mission College (Student Drop Off)	3000 Mission College Boulevard	Santa Clara, CA 95054
Northside Branch Library (Outside Drop Box)	695 Moreland Way	Santa Clara, CA 95054
Saratoga City Hall (Outside Drop Box)	13777 Fruitvale Avenue	Saratoga, CA 95070
Saratoga Library (Outside Drop Box)	13650 Saratoga Avenue	Saratoga, CA 95070
West Valley College (@ Fox Center)	14000 Fruitvale Avenue	Saratoga, CA 95070
Stanford Hospital (Outside Drop Box)	300 Pasteur Drive	Stanford, CA 94305
Sunnyvale Community Services (Outside Drop Box)	1160 Kern Avenue	Sunnyvale, CA 94085
Sunnyvale Public Library (Outside Drop Box)	665 West Olive Avenue	Sunnyvale, CA 94086
Sunnyvale City Hall (Outside Drop Box)	456 West Olive Avenue	Sunnyvale, CA 94086
Valley Medical Center Sunnyvale (Outside Drop Box)	660 South Fair Oaks Avenue	Sunnyvale, CA 94086
Sunnyvale Community Center (Outside Drop Box)	550 East Remington Drive	Sunnyvale, CA 94087
Sunnyvale Presbyterian Church (Outside Drop Box)	728 West Fremont Avenue	Sunnyvale, CA 94087
Grocery Outlet Bargain Market (Outside Drop Box)	1180 North Fair Oaks Avenue	Sunnyvale, CA 94089

**All Ballot Drop Box Locations are accessible.**



# Vote Centers



Vote by Mail ballots will be mailed starting October 7. Mail back your ballot using the free prepaid postage return envelope provided.



Vote centers offer in-person voting options for a full spectrum of services, including language and accessibility. Masks and gloves are available at the vote centers for voters, workers, and observers.

The safety of voters and staff is our top priority.



If you prefer to vote in person at a Vote Center, consider voting early to avoid the crowds on Election Day.

## Early Voting at the Registrar of Voters' Office

1555 Berger Drive, Building 2, San Jose, CA 95112

Monday – Friday	October 7, 2024 – November 4, 2024	8:00 a.m. to 5:00 p.m.
Saturday – Sunday	October 26, 2024 – October 27, 2024 November 2, 2024 – November 3, 2024	9:00 a.m. to 5:00 p.m.
Election Day	November 5, 2024	7:00 a.m. to 8:00 p.m.

All Vote Center Locations are accessible.



**LOCATIONS ARE SUBJECT TO CHANGE**

Please visit [www.sccvote.org](http://www.sccvote.org) for the most current list.

# 11-Day Vote Center Locations

Open October 26 - November 4, 2024 from 9 a.m. to 5 p.m.

November 5, 2024 Election Day from 7 a.m. to 8 p.m.

## LOCATIONS ARE SUBJECT TO CHANGE

Please visit [www.sccvote.org](http://www.sccvote.org) for the most current list.

Language assistance is provided at all Vote Centers in: Chinese, Spanish, Tagalog, and Vietnamese. Some locations will have additional language assistance in: Hindi, Japanese, Korean, Khmer, Gujarati, Nepali, Persian, Portuguese, Punjabi, Russian, Syriac, Tamil, and Telugu. Please visit [www.sccvote.org](http://www.sccvote.org) for the specific languages available at each location.

Location	Address	City
South Valley Middle School - Practice Room J17	7881 Murray Ave	Gilroy, CA 95020
Town of Los Altos Hills - Council Chambers	26379 Fremont Rd	Los Altos Hills, CA 94022
Antiochian Orthodox Church of the Redeemer	380 Magdalena Ave	Los Altos Hills, CA 94024
Morgan Hill Masonic Center - Hall	380 W Dunne Ave	Morgan Hill, CA 95037
Palo Alto Art Center - Auditorium	1313 Newell Rd	Palo Alto, CA 94303
Ventura Community Center - Activity Center	3990 Ventura Ct	Palo Alto, CA 94306
Elks Lodge #522 - Vestibule and Media Rooms	444 W Alma Ave	San Jose, CA 95110
Tully Branch Library - Community Room	880 Tully Rd	San Jose, CA 95111
Edenvale Branch Library - Community Room	101 Branham Ln E	San Jose, CA 95111
West Valley Branch Library - Community Room	1243 San Tomas Aquino Rd	San Jose, CA 95117
Santa Teresa Branch Library - Community Room	290 International Cir	San Jose, CA 95119
Almaden Community Center - Classroom 1	6445 Camden Ave	San Jose, CA 95120
Evergreen Branch Library - Community Room	2635 Aborn Rd	San Jose, CA 95121
Vietnamese American Cultural Center - Community Room	2072 Lucretia Ave	San Jose, CA 95122
Campbell Union High School District - Board Room	3235 Union Ave	San Jose, CA 95124
Cambrian Branch Library - Community Room	1780 Hillside Ave	San Jose, CA 95124
Christ the Good Shepherd Lutheran Church - Great Hall	1550 Meridian Ave	San Jose, CA 95125
Dr. Roberto Cruz Alum Rock Library - Community Room	3090 Alum Rock Ave	San Jose, CA 95127
Mt. Pleasant High School - Classrooms 805 & 808	1750 S White Rd	San Jose, CA 95127
Washington Park - Park Building	840 W Washington Ave	Sunnyvale, CA 94086
Braly Park	704 Daffodil Ct	Sunnyvale, CA 94086

Open October 26 - November 4, 2024 - from 10:00 a.m. to 6:00 p.m.

Election Day, November 5, 2024 - from 7:00 a.m. to 8:00 p.m.

Location	Address	City
Cupertino Library - Community, 201A & 201B Rooms	10800 Torre Ave	Cupertino, CA 95014
Milpitas Library - Auditorium	160 N Main St	Milpitas, CA 95035
Central Park Library - Redwood Room	2635 Homestead Rd	Santa Clara, CA 95051
Northside Branch Library - Community Room	695 Moreland Way	Santa Clara, CA 95054
Saratoga Library - Community Room	13650 Saratoga Ave	Saratoga, CA 95070

All Vote Center Locations are accessible.



## 4-Day Vote Center Locations

Open November 2 - November 4, 2024 from 9 a.m. to 5 p.m.

November 5, 2024 Election Day from 7 a.m. to 8 p.m.

### LOCATIONS ARE SUBJECT TO CHANGE

Please visit [www.sccvote.org](http://www.sccvote.org) for the most current list.

Language assistance is provided at all Vote Centers in: Chinese, Spanish, Tagalog, and Vietnamese. Some locations will have additional language assistance in: Hindi, Japanese, Korean, Khmer, Gujarati, Nepali, Persian, Portuguese, Punjabi, Russian, Syriac, Tamil, and Telugu. Please visit [www.sccvote.org](http://www.sccvote.org) for the specific languages available at each location.

Location	Address	City
Campbell Community Center - Room Q80	1 W Campbell Ave	Campbell, CA 95008
Rancho Rinconada - Recreation Building	18000 Chelmsford Dr	Cupertino, CA 95014
Seven Springs Club House	21125 Seven Springs Pkwy	Cupertino, CA 95014
Garden Gate Elementary School - Library	10500 Ann Arbor Ave	Cupertino, CA 95014
Gilroy's First Baptist Church - Hall	8455 Wren Ave	Gilroy, CA 95020
Gilroy Center for the Arts	7341 Monterey Rd	Gilroy, CA 95020
Gilroy Police Department - Community Room	7301 Hanna St	Gilroy, CA 95020
Gilroy Veterans Memorial Building - Bingo Hall	74 W 6th St	Gilroy, CA 95020
The Terraces at Los Altos - Redwood Hall	373 Pine Ln	Los Altos, CA 94022
Los Altos Community Center - Grand Oak Room	97 Hillview Ave	Los Altos, CA 94022
Immanuel Lutheran Church - Fellowship Hall	1715 Grant Rd	Los Altos, CA 94024
Belwood Cabana Club - Cabana	100 Belwood Gateway	Los Gatos, CA 95032
Los Gatos Lodge - El Gato Room	50 Los Gatos-Saratoga Rd	Los Gatos, CA 95032
Lakeside Elementary School - Conference Room	19621 Black Rd	Los Gatos, CA 95033
Pioneer Mobile Home Park - Clubhouse	60 Wilson Way	Milpitas, CA 95035
SJECCD Milpitas Extension - HUB	1450 Escuela Pkwy	Milpitas, CA 95035
Christ Community Church of Milpitas - Sequoia	1000 S Park Victoria Dr	Milpitas, CA 95035
Westmont of Morgan Hill - Theater	1160 Cochrane Rd	Morgan Hill, CA 95037
Mountain View Community Center - Redwood Hall	201 S Rengstorff Ave	Mountain View, CA 94040
St. Timothy's Episcopal Church - Edwards Hall	2094 Grant Rd	Mountain View, CA 94040
Mountain View Masonic Lodge - Auditorium	890 Church St	Mountain View, CA 94041
Church of Scientology Silicon Valley - The Chapel	1066 Linda Vista Ave	Mountain View, CA 94043
Mitchell Park Community Center - El Palo Alto Room	3700 Middlefield Rd	Palo Alto, CA 94303
Palo Alto Buddhist Temple - Issei Hall	2751 Louis Rd	Palo Alto, CA 94303
Palo Alto Elks Lodge - Ballroom	4249 El Camino Real	Palo Alto, CA 94306
Barron Park Elementary School - Music Room 19	800 Barron Ave	Palo Alto, CA 94306
Center for Employment Training - Banquet Room	701 Vine St	San Jose, CA 95110

All Vote Center Locations are accessible.



## 4-Day Vote Center Locations

Location	Address	City
Santa Clara County Fairgrounds - Heritage Hall	344 Tully Rd	San Jose, CA 95111
African American Community Service Agency - Multipurpose Room	304 N 6th St	San Jose, CA 95112
Franklin-McKinley School District - Boardroom	645 Wool Creek Dr	San Jose, CA 95112
Italian American Heritage Foundation Cultural Center - IAHF Hall	425 N 4th St	San Jose, CA 95112
Joyce Ellington Branch Library - Community Room	491 E Empire St	San Jose, CA 95112
SJSU Provident Credit Union Event Center	290 S 7th St	San Jose, CA 95112
Mexican Heritage Plaza - Classrooms 4 & 5	1700 Alum Rock Ave	San Jose, CA 95116
San Jose High School - Auxiliary Gym	275 N 24th St	San Jose, CA 95116
Olinder Community Center - Community Room	848 E William St	San Jose, CA 95116
Roosevelt Community Center - Dance Room	901 E Santa Clara St	San Jose, CA 95116
Capitol Park	800 Peter Pan Ave	San Jose, CA 95116
Taiwanese American Presbyterian Church - Gym Room	3675 Payne Ave	San Jose, CA 95117
Pioneer High School - Dance Room	1290 Blossom Hill Rd	San Jose, CA 95118
Vineland Branch Library - Community Room	1450 Blossom Hill Rd	San Jose, CA 95118
Silver Creek High School - Staff Lounge	3434 Silver Creek Rd	San Jose, CA 95121
Hillview Branch Library - Community Room	1600 Hopkins Dr	San Jose, CA 95122
Overfelt Adult Center - Classroom D101	1901 Cunningham Ave	San Jose, CA 95122
Calero High School - Multipurpose Room B110	420 Calero Ave	San Jose, CA 95123
Santa Teresa High School - Multi-Purpose Bldg. 1300 ( <i>enter on the Santa Teresa Blvd entrance</i> )	6150 Snell Ave	San Jose, CA 95123
St. Timothy's Lutheran Church - Cafeteria	5100 Camden Ave	San Jose, CA 95124
Camden Community Center - Classroom 3	3369 Union Ave	San Jose, CA 95124
Willow Glen Community Center - Rooms 3 & 5	2175 Lincoln Ave	San Jose, CA 95125
San Jose Scottish Rite Center - Library	2455 Masonic Dr	San Jose, CA 95125
Italian Gardens Apartments - Community Room	1524 Almaden Rd	San Jose, CA 95125
San Jose Odd Fellows Community Center Hall - Fellowship Hall	1035 Emory St	San Jose, CA 95126
Roberto Cruz Leadership Academy - Jaguar Den	14281 Story Rd	San Jose, CA 95127
Alum Rock Youth Center - Community Room	137 N White Rd	San Jose, CA 95127
San Jose City College-Student Center - Community Room	2100 Moorpark Ave	San Jose, CA 95128
Vista Center for the Blind & Visually Impaired - Auditorium	101 N Bascom Ave	San Jose, CA 95128
Moreland Community Center - MU1 & MU2	1850 Fallbrook Ave	San Jose, CA 95130
PayPal Inc. - Building 12, Town Hall	2161 N 1st St	San Jose, CA 95131
Brooktree Elementary School - Music Room & Stage	1781 Olivetree Dr	San Jose, CA 95131
Bible Way Christian Center - Fellowship Room	2090 Oakland Rd	San Jose, CA 95131
Summerdale Elementary School - Music Room & Stage	1100 Summerdale Dr	San Jose, CA 95132
Berryessa Branch Library - Community Room	3355 Noble Ave	San Jose, CA 95132
Majestic Way Elementary School - FIS Room	1855 Majestic Way	San Jose, CA 95132
Independence High School - D-Commons	617 N Jackson Ave	San Jose, CA 95133
Village Square Library - Padma and Venkat Pullela Community Room	4001 Evergreen Village Sq	San Jose, CA 95135

**All Vote Center Locations are accessible.**





## 4-Day Vote Center Locations

Location	Address	City
St. Francis of Assisi Parish - Sandersfeld Hall	5111 San Felipe Rd	San Jose, CA 95135
Sikh Gurdwara Sahib - South Hall	3636 Gurdwara Ave	San Jose, CA 95148
Triton Museum of Art - Collection Hall	1505 Warburton Ave	Santa Clara, CA 95050
Valley Village Retirement Community - Building 18, Social Center	390 N Winchester Blvd	Santa Clara, CA 95050
Santa Clara University - Parlors B&C Room	820 Alviso St	Santa Clara, CA 95050
Muslim Community Association - Banquet Hall	3003 Scott Blvd	Santa Clara, CA 95054
UCSC Silicon Valley Extension - Rooms 2110 & 2130	3175 Bowers Ave	Santa Clara, CA 95054
Prince of Peace Lutheran Church - Fellowship Hall	12770 Saratoga Ave	Saratoga, CA 95070
Stanford University-Tresidder Center - Oak Lounge	459 Lagunita Dr	Stanford, CA 94305
Columbia Middle School - Library	739 Morse Ave	Sunnyvale, CA 94085
Fair Oaks Park - Park Building	540 N Fair Oaks Ave	Sunnyvale, CA 94085
Sunnyvale Middle School - Library	1080 Mango Ave	Sunnyvale, CA 94087
Sunnyvale Community Center - Ballroom	550 E Remington Dr	Sunnyvale, CA 94087

## 4-Day Vote Center Locations

Open November 2 - November 4, 2024 - from 10:00 a.m. to 6:00 p.m.

Election Day, November 5, 2024 - from 7:00 a.m. to 8:00 p.m.

Location	Address	City
Gilroy Library - Meeting Room	350 W 6th St	Gilroy, CA 95020
Morgan Hill Library - Program Room 107	660 W Main Ave	Morgan Hill, CA 95037

All Vote Center Locations are accessible.



## LOCATIONS ARE SUBJECT TO CHANGE

Please visit [www.sccvote.org](http://www.sccvote.org) for the most current list.

Voters may access the State Voter Information Guide at <https://voterguide.sos.ca.gov/> and the County Voter Information Guide at [sccvote.org/CVIG](http://sccvote.org/CVIG). These guides are also available at the Registrar of Voters' office and at all vote centers.

## Electronic Ballot Marking Device Voting Instructions



**Activate** the voting machine by inserting the Voter Card into the yellow slot at the bottom of the voting machine.

**Choose** the language in which you wish to vote.

**Make your selection** by touching the candidate's name or measure response of your choice. A black checkmark will appear in the square next to the choice.

**To change your selection**, touch the selected choice again. The checkmark will disappear and you may make a new selection.



To vote for a qualified **write-in** candidate choice, touch the word **"WRITE-IN"**. When the keyboard screen appears, touch the letters of the candidate's name, then touch the **"ACCEPT"** button in the lower right-hand corner of your screen to continue.



To change the text size, touch the **"Text Size"** button and select **"Normal"** or **"Large"**.



You may also change the language at any time of the voting session by selecting the **"Language"** button. Furthermore, you can change the appearance of the ballot on screen by selecting the **"View"** button.

**To review** your selections at any time prior to casting your ballot, touch **"Review"** at the bottom left of the screen. The **Review** screen will provide you with a summary of your selections. If you have not selected the maximum allowed selections in a contest, a warning will appear to let you know the contest is blank or under-voted. Touch the contest to return to it.

If you are satisfied with your selections, touch **"Print Ballot"** at the bottom right of the screen to bring up the print confirmation.



A final confirmation will appear asking you if you want to **Print your ballot** or **Review your choices**. If you want to **make a change to your selections**, touch **"Review your choices"**. If you want to **print your ballot**, touch **"Print your ballot"** and the ballot marking device will print your ballot with the choices you have made.

**NOTE: You cannot change your selections after the ballot is cast.**

The voting session will then be complete. The **Voter Card** will be deactivated, please return it to the Election Officer. If you have questions, please ask your Election Officer for assistance, or refer to the instructions on the side panel.

**Note: The Sample of the Ballot located in this guide is a facsimile of the Optical Scan paper ballot not the Electronic ballot.**



## Conditional Voter Registration

Conditional Voter Registration (CVR) extends the existing 15-day registration deadline to eligible voters, allowing them to register and vote 14 days prior to an election through Election Day. An eligible voter would need to register at the County of Santa Clara Registrar of Voters' Office or a Vote Center to conditionally register to vote and vote a conditional ballot. If the voter is a military or overseas voter, or is a voter with disabilities, that voter may register to vote online and request to cast a ballot using the Remote Accessible Vote by Mail (RAVBM) system.

**CVR ballots will be issued at the Registrar of Voters' Office and Vote Centers.** Conditional ballots will not be mailed to voters.

In order to conditionally register, the voter must first complete an affidavit of registration. The affidavit is conveniently located on the front side of the CVR envelope. Once the affidavit is complete and submitted to the election official, a conditional ballot will be issued to the voter.

The affidavit will be processed and once the eligibility is determined and validated, the registration will become permanent and the conditional ballot will be counted. Conditional Voter Registrations are treated and processed in the same manner as other Voter Registration Applications; conditional ballots are treated and processed the same as provisional ballots.

If you have any questions regarding Conditional Voter Registration, please call (408) 299-VOTE (8683) or Toll Free (866) 430-VOTE (8683).

You may check the status of your voter registration at [voterstatus.sos.ca.gov](http://voterstatus.sos.ca.gov).

CVR was enacted in 2012, to be operative on the January 1st after the certification of a statewide voter registration database. VoteCal, California's statewide voter registration database, was certified on September 26, 2016; CVR became operative as of January 1, 2017. Effective January 1, 2017, Conditional Voter Registration is available to eligible voters in California pursuant to Election Codes 2170 through 2173.



**County of Santa Clara Registrar of Voters' Office:**

**Fax:** (408) 998-7314 – **Scan/Email:** [voterinfo@rov.sccgov.org](mailto:voterinfo@rov.sccgov.org)

**Mail:** Registrar of Voters, PO Box 611300, San Jose, CA 95161-1300

**Website:** [www.sccvote.org/voterschoice](http://www.sccvote.org/voterschoice)

For questions, please call: (408) 299-VOTE (8683) or Toll Free: (866) 430-VOTE (8683)

# Official Ballot Application

(आधिकारिक मतपत्र आवेदन पत्र/公式投票用紙申請書/ការដាក់ពាក្យសុំសន្លឹកឆ្នោតផ្លូវការ/공식 투표지 신청서)

The County of Santa Clara produces Ballots in Hindi, Japanese, Khmer, and Korean languages. Voters may request bilingual ballots in any of these languages by completing the application below and return it by mail to Registrar of Voters, Vote By Mail Division, 1555 Berger Dr., Bldg. 2, San Jose, CA 95112 or by fax to (408) 293-6002 or by calling toll free (866) 430-VOTE (8683), or by applying at [www.sccvote.org](http://www.sccvote.org). The last day to request a ballot to be mailed is **October 29**. Voters who are unable to mark a ballot may bring up to two individuals to assist them in voting.

Santa Clara काउंटी हिन्दी, जापानी, खमेर और कोरियाई भाषाओं में मतपत्र प्रकाशित करती है। मतदाता नीचे आवेदन पत्र भरकर इनमें से किसी भी भाषा में द्विभाषी मतपत्रों का अनुरोध कर सकते हैं और उसे डाक द्वारा Registrar of Voters, Vote By Mail Division, 1555 Berger Dr., Bldg. 2, San Jose, CA 95112 को या (408) 293-6002 पर फ़ैक्स द्वारा या टोल-फ़्री नं. (866) 430-VOTE (8683) पर फ़ोन करके, या [www.sccvote.org](http://www.sccvote.org) पर आवेदन पत्र देकर लौटा सकते हैं। मतपत्र को डाक से भेजने का अनुरोध करने का अंतिम दिन **29 अक्टूबर** है। जो मतदाता मतपत्र चिह्नित करने में असमर्थ हैं, वे मतदान में सहायता के लिए अपने साथ दो व्यक्तियों को ला सकते हैं।

Santa Clara 郡は投票用紙をヒンディー語、日本語、クメール語、韓国語で作成しています。有権者の方は、以下の申請書に必要事項を記入し、それを Registrar of Voters, Vote By Mail Division, 1555 Berger Dr., Bldg. 2, San Jose, CA 95112 まで郵送、(408) 293-6002 までファクス送信、フリーダイヤル (866) 430-VOTE (8683) に電話、または [www.sccvote.org](http://www.sccvote.org) で申請することにより、これらの言語のいずれかと英語の二か国語投票用紙を受け取る事ができます。投票用紙の郵送申請締め切りは **10月29日**です。投票用紙に印を付けることができない有権者の方は、投票を援助してくれる付き添いが2人まで許可されます。

ខោនធី Santa Clara ផ្តល់សន្លឹកឆ្នោតជាភាសា ហ៊ីនឌូ ជប៉ុន ខ្មែរ និង កូរ៉េ ។ អ្នកបោះឆ្នោតអាចស្នើសុំសន្លឹកឆ្នោតពីភាសានៅក្នុងភាសាទាំងនេះដោយការបំពេញពាក្យសុំខាងក្រោម ហើយបញ្ជូនវាតាមសំបុត្រទៅឲ្យ Registrar of Voters, Vote By Mail Division, 1555 Berger Dr., Bldg. 2, San Jose, CA 95112 ឬដោយទូរសារទៅកាន់លេខ (408) 293-6002 ឬ ដោយហៅទៅលេខទូរស័ព្ទដោយឥតគិតថ្លៃ (866) 430-VOTE (8683) ឬ ដោយដាក់ពាក្យសុំនៅ [www.sccvote.org](http://www.sccvote.org) ។ ថ្ងៃចុងក្រោយដើម្បីស្នើសុំសន្លឹកឆ្នោតតាមសំបុត្រគឺថ្ងៃទី **29 ខែ តុលា** ។ អ្នកបោះឆ្នោតដែលមិនមានលទ្ធភាពដើម្បីគូសសន្លឹកឆ្នោតអាចនាំបុគ្គលពីររូបដើម្បីជួយពួកគេក្នុងការបោះឆ្នោត។

Santa Clara 카운티는 투표지를 힌디어, 일본어, 크메르어, 한국어로 제공합니다. 유권자는 아래의 신청서를 작성해 우편주소 Registrar of Voters, Vote By Mail Division, 1555 Berger Dr., Bldg. 2, San Jose, CA 95112, 또는 팩스 (408) 293-6002 로 제출해 위의 언어로 된 이중 언어 투표지를 요청할 수 있습니다. 그리고 수신 부담 전화 (866) 430-VOTE (8683), 아니면 [www.sccvote.org](http://www.sccvote.org) 를 통해서도 신청할 수 있습니다. 우편을 이용하는 투표지 신청은 **10월 29일** 마감됩니다. 투표지에 표기를 할 수 없는 투표자는 투표를 도와줄 인원으로 최대 2명을 동반할 수 있습니다.

PREFERRED LANGUAGE - I would like to receive an official ballot in the following language:

- पसंदीदा भाषा: निम्नलिखित भाषा में आधिकारिक मतपत्र प्राप्त करना चाहता/चाहती हूँ।
- 私は日本語の公式投票用紙を希望します。
- ភាសាដែលចូលចិត្ត ៖ ខ្ញុំចង់ទទួលយកសន្លឹកឆ្នោតផ្លូវការជាភាសាខ្មែរ ។
- 선호 언어: 한국어로 된 공식 투표지를 받고 싶습니다.

Print Name / नाम लिखें / 氏名 (活字体) / សរសេរឈ្មោះ / 성명(정자체)

Residence Address / आवासीय पता / 現住所 / អាសយដ្ឋានស្នាក់នៅ / 거주지 주소

Mailing Address / डाक पता / 郵便宛先 / អាសយដ្ឋានផ្ញើសំបុត្រ / 우편 주소

Email / ईमेल / E 메일 / អ៊ីមែល / 이메일





**County of Santa Clara  
Registrar of Voters**

**VOTER'S ACTION REQUEST FORM**

FOR VRD USE ONLY
Voter ID #:
Group #:
Action Completed By:
Date Processed:
Previously Processed By:
Date Previously Processed:

1. Voters **must** already be registered to vote in the County of Santa Clara for this form to be processed.
2. **This form is not intended to change names and/or political party preferences.** To do so, voters **must re-register**.
3. Visit [www.sccvote.org](http://www.sccvote.org) to register to vote or contact our office.
4. If requesting an action on behalf of a voter, provide **their** information in the **CURRENT VOTER INFORMATION** box below.

CURRENT VOTER INFORMATION:			
<i>Please complete and print all information clearly for processing purposes.</i>			
Name:	FIRST	MIDDLE	LAST
Birth Date:	m	m	d d / y y y y
Registered Address:	CURRENT		
VOTER'S SIGNATURE (REQUIRED):	Date: m m / d d / y y y y		

**County Voter Information Guide (CVIG) Delivery Preference:**

- Go Green:** I no longer wish to receive a paper CVIG by mail and would prefer to receive an **online CVIG**. Please email my CVIG to: \_\_\_\_\_
- I would prefer to receive a paper CVIG by mail.

**Voter Language Preference: ALL voters will receive election materials in English and other available materials in your preferred language.**

- Official Ballots and CVIGs are available in Chinese, Spanish, Tagalog, and Vietnamese.
- Official Ballots are also available in Hindi, Japanese, Khmer, and Korean.
- Facsimile Ballots are available upon request in targeted precincts in Gujarati, Nepali, Punjabi, Tamil, and Telugu.

**Select ONE Language Preference Below:**

- |                                  |                                  |                                   |                                  |                                     |                                |                                   |
|----------------------------------|----------------------------------|-----------------------------------|----------------------------------|-------------------------------------|--------------------------------|-----------------------------------|
| <input type="checkbox"/> English | <input type="checkbox"/> Chinese | <input type="checkbox"/> Spanish  | <input type="checkbox"/> Tagalog | <input type="checkbox"/> Vietnamese | <input type="checkbox"/> Hindi | <input type="checkbox"/> Japanese |
| <input type="checkbox"/> Khmer   | <input type="checkbox"/> Korean  | <input type="checkbox"/> Gujarati | <input type="checkbox"/> Nepali  | <input type="checkbox"/> Punjabi    | <input type="checkbox"/> Tamil | <input type="checkbox"/> Telugu   |

- My name is **misspelled**. The incorrect spelling is: \_\_\_\_\_ The **correct spelling** is: \_\_\_\_\_  
*A name change, other than to correct a misspelling, requires a new Voter Registration Application to be completed.*
- I moved to a **new residence** address within the County of Santa Clara (i.e., street address & city): \_\_\_\_\_
- DO NOT HAVE A STREET ADDRESS**, but I am often near (must provide intersecting cross streets, landmark, or routes, N, S, SW, etc.): \_\_\_\_\_
- My mailing address differs from my residence address; **I want to add or update my MAILING address to:** \_\_\_\_\_
- Remove the following **MAILING** address: \_\_\_\_\_
- Remove any phone number  I want to update my phone number to: \_\_\_\_\_
- Remove any email address  I want to update my email to: \_\_\_\_\_

**Cancel Voter Registration:**

- Please cancel **my** registration. (**Reason**): \_\_\_\_\_
- Voter named **above** is deceased.  
Name of person reporting death: \_\_\_\_\_ Phone: \_\_\_\_\_  
**SIGNATURE** of person reporting death (**REQUIRED**): \_\_\_\_\_

<p><b>Return to the Registrar of Voters' Office:</b>  <b>Email:</b> <a href="mailto:voterinfo@rov.sccgov.org">voterinfo@rov.sccgov.org</a> — <b>Mail:</b> Registrar of Voters, PO Box 611300, San Jose, CA 95161-1300 — <b>Fax:</b> (408) 998-7314  <b>Questions? Please call:</b> (408) 299-VOTE (8683) or <b>Toll Free:</b> (866) 430-VOTE (8683)</p>
---

# Myth Busters

## Trusted Election Information in Santa Clara County

Ensuring Public Trust in Elections by communicating and providing access to Accurate, Current, and Transparent (ACT) election information to the voters of Santa Clara County.



**Fact:** Sharpie, blue, and black ink are okay to use.

**Fact:** Holes in the Vote by Mail envelopes serve as guides to help voters with special needs sign accurately.

**Fact:** The tabulation equipment is not connected to the internet.

**Fact:** Vote by Mail is the same as Absentee Voting.



Scan the QR code or visit  
[vote.santaclaracounty.gov/myth-busters](https://vote.santaclaracounty.gov/myth-busters)  
for additional information about  
Myths & Facts and Educational Flyers.

# Go Green

with the Registrar of Voters' Office

[www.sccvote.org/gogreen](http://www.sccvote.org/gogreen)



Scan code

## Too much mail?

Opt out of receiving your County Voter Information Guide (CVIG) by mail.

View your CVIG online or on our website.

[sccvote.org/gogreen](http://sccvote.org/gogreen)



It's easy, it's free and saves a tree!



# VOTER BILL OF RIGHTS

## YOU HAVE THE FOLLOWING RIGHTS

- The right to vote if you are a registered voter.** You are eligible to vote if you are:
  - ★ a U.S. citizen living in California
  - ★ at least 18 years old
  - ★ registered where you currently live
  - ★ not currently serving a state or federal prison term for the conviction of a felony
  - ★ not currently found mentally incompetent to vote by a court
- The right to vote if you are a registered voter even if your name is not on the list.**  
You will vote using a provisional ballot. Your vote will be counted if elections officials determine that you are eligible to vote.
- The right to vote if you are still in line when the polls close.**
- The right to cast a secret ballot** without anyone bothering you or telling you how to vote.
- The right to get a new ballot if you have made a mistake**, if you have not already cast your ballot. You can:  
**Ask an elections official at a polling place** for a new ballot,  
**Exchange your vote-by-mail ballot** for a new one at an elections office, or at your polling place, or  
**Vote using a provisional ballot.**
- The right to get help casting your ballot** from anyone you choose, except from your employer or union representative.
- The right to drop off your completed vote-by-mail ballot at any polling place** in California.
- The right to get election materials in a language other than English** if enough people in your voting precinct speak that language.
- The right to ask questions to elections officials about election procedures** and watch the election process. If the person you ask cannot answer your questions, they must send you to the right person for an answer. If you are disruptive, they can stop answering you.
- The right to report any illegal or fraudulent election activity** to an elections official or the Secretary of State's office.

### SPECIAL NOTICE

- Polls are open from 7:00 a.m. to 8:00 p.m. on the day indicated in the posted county Voter Information Guide.
- Specific instructions on how to vote, including how to cast a provisional ballot, can be obtained from a poll worker or by reading the information mailed to you by your local elections official.
- If you are a newly registered voter, you may be asked to provide appropriate identification or other documentation according to federal law. But please note that every individual has the right to cast a provisional ballot even if he or she does not provide the documentation.
- It is against the law to represent yourself as being eligible to vote unless you meet all of the requirements to vote under federal and state law.
- It is against the law to tamper with voting equipment.

**If you believe you have been denied any of these rights, or you are aware of any election fraud or misconduct, please call the Secretary of State's confidential toll-free Voter Hotline at (800) 345-VOTE (8683).**



On the web at [www.sos.ca.gov](http://www.sos.ca.gov)



By phone at **(800) 345-VOTE (8683)**



By email at [elections@sos.ca.gov](mailto:elections@sos.ca.gov)

# Learn How to Vote with our How-To Videos



- How to Register to Vote
- How to Vote in Person
- How to Vote Military or Overseas
- How to Vote by Mail
- How to Vote Accessibly

Visit [vote.santaclaracounty.gov/notices/multimedia-center](https://vote.santaclaracounty.gov/notices/multimedia-center) or our YouTube channel @sccvote to learn how to vote.

# Volunteer Opportunities

Volunteer Stipend up to \$415

## Volunteers must be:

- ✓ At least 18 years old
- ✓ A U.S. Citizen and Registered Voter or Legal Permanent Resident

## High school students must:

- ✓ Be at least 16 years old
- ✓ Be a U.S. Citizen or Legal Permanent Resident
- ✓ Have a GPA of 2.5 or higher

Now recruiting bilingual Election Officers in the following languages:  
Gujarati, **Japanese, Khmer**, Nepali, Persian, Portuguese, Russian, Syriac, Tamil, and Telugu.  
You may sign up by phone: **1-408-299-POLL (7655)** or online at **www.sccvote.org**, or by **mail** or **email**.

**(408) 299-POLL (7655)** (English)  
(408) 282-3086 (Chinese: Mandarin, Cantonese & Taiwanese)  
(408) 282-3095 (Spanish)  
(408) 282-3089 (Tagalog)  
(408) 282-3097 (Vietnamese)  
(408) 282-3199 (Hindi)  
(408) 299-7655 (Korean)

---

## CONTACT INFORMATION

Name: \_\_\_\_\_

Residence Address: \_\_\_\_\_

City: \_\_\_\_\_ Zip Code: \_\_\_\_\_

Telephone # Daytime (    )    -

Evening (    )    -

E-mail: \_\_\_\_\_

I am a U.S. Citizen and Registered Voter in California: Yes  No

I am a Legal Permanent Resident: Yes  No

I have transportation: Yes  No

I am willing to travel within the county: Yes  No

In addition to English, I also speak \_\_\_\_\_ fluently  
(Language)

Signature: \_\_\_\_\_

Date: \_\_\_\_\_

**Mail to:** SANTA CLARA COUNTY REGISTRAR OF VOTERS  
PO BOX 612350, SAN JOSE CA 95161-2350

**Email:** [pollworker@rov.sccgov.org](mailto:pollworker@rov.sccgov.org)

# Follow us on Social Media

@sccvote

Facebook



X



Instagram



Podcast Linktree



YouTube



LinkedIn



866 430-8683  
sccvote.org

**Vote Early at the Registrar of Voters' Office or at Vote Centers**

Registrar of Voters' Office

1555 Berger Drive, Building 2, San Jose, CA 95112

Voting hours: Monday - Friday

October 7 - November 4

8 a.m. to 5 p.m.

Saturday - Sunday

October 26 - 27 & November 2 - 3

9 a.m. to 5 p.m.

Election Day

November 5

7 a.m. to 8 p.m.

Vote Centers are open October 26 - November 5 (locations and schedules inside this guide)

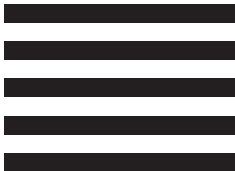
DETACH HERE

From:

\_\_\_\_\_  
\_\_\_\_\_  
\_\_\_\_\_



NO POSTAGE  
NECESSARY  
IF MAILED  
IN THE  
UNITED STATES



Did you sign the form?



**BUSINESS REPLY MAIL**  
FIRST-CLASS MAIL PERMIT NO. 918 SAN JOSE, CA

POSTAGE WILL BE PAID BY ADDRESSEE



REGISTRAR OF VOTERS  
VOTE BY MAIL DIVISION  
PO BOX 49003  
SAN JOSE CA 95161-9954

**THE CHOICE IS YOURS**

**VOTE BY MAIL**

Ways to Return Your VBM Ballot:

OR

**VOTE IN PERSON**

Services Provided at Vote Centers:



**FREE POSTAGE  
PAID ENVELOPE**



**OPEN**



**MORE DAYS**



**OFFICIAL  
BALLOT  
DROP BOX**



**NEW & MORE  
ACCESSIBLE  
VOTING EQUIPMENT**



**ANY  
VOTE CENTER**



**BILINGUAL BALLOTS &  
LANGUAGE ASSISTANCE**

COUNTY OF SANTA CLARA  
REGISTRAR OF VOTERS  
PO BOX 611360  
SAN JOSE CA 95161-1360



NONPROFIT ORG.  
U.S. POSTAGE  
PAID  
SANTA CLARA COUNTY  
REGISTRAR OF VOTERS

**ELECTRONIC SERVICE REQUESTED**

Mail To:

**November 5, 2024, General Election**

Name: \_\_\_\_\_

Residence Address: \_\_\_\_\_

Mailing Address: \_\_\_\_\_

I'm requesting a replacement ballot. Application due in Registrar's Office by 5 p.m. on 10/29/2024.

My preferred language is:

- |   |  |
|---|--|
| <input type="checkbox"/> English            | <input type="checkbox"/> Punjabi / ਪੰਜਾਬੀ        |
| <input type="checkbox"/> Chinese / 中文       | <input type="checkbox"/> Spanish / Español       |
| <input type="checkbox"/> Gujarati / ગુજરાતી | <input type="checkbox"/> Tagalog                 |
| <input type="checkbox"/> Hindi / हिन्दी     | <input type="checkbox"/> Tamil / தமிழ்           |
| <input type="checkbox"/> Japanese / 日本語     | <input type="checkbox"/> Telugu / తెలుగు         |
| <input type="checkbox"/> Khmer / ភាសាខ្មែរ  | <input type="checkbox"/> Vietnamese / Tiếng Việt |
| <input type="checkbox"/> Korean / 한국어       | <input type="checkbox"/> Other _____             |
| <input type="checkbox"/> Nepali / नेपाली    |  |

**X** \_\_\_\_\_  
SIGNATURE REQUIRED DATE

DETACH HERE

You can also request a replacement ballot by calling (408) 299-VOTE (8683) or toll free (866) 430-VOTE (8683).

**PLEASE LOOK INSIDE FOR A COMPLETE LIST OF VOTE CENTERS AND DROP BOX LOCATIONS OR VISIT [WWW.SCCVOTE.ORG](http://WWW.SCCVOTE.ORG).**

**Important Dates:**

- October 7** Official Ballots mailed to all voters - Ballot Drop Boxes open
- October 7** Early Voting starts at the Registrar of Voters' Office
- October 21** Last day to register to vote
- October 26** 11-Day Vote Centers open
- October 29** Last day to request a replacement ballot to be mailed to you
- November 2** 4-Day Vote Centers open
- November 5** Election Day - All ballots must be postmarked or received by 8 p.m.

002