



COUNTY VOTER INFORMATION GUIDE

November 5, 2024 General Election

- ★ *All Santa Clara County registered voters will be mailed a Vote by Mail Ballot starting 29 days before Election Day. Inactive voters will not receive a Vote by Mail Ballot unless they update their voter registration or contact the Registrar of Voters' office.*
- ★ *Voters may choose to return the completed ballot by using the Free Prepaid Postage Return Envelope, at ANY Official Ballot Drop Box or ANY Santa Clara County Vote Center!*
- ★ *Voters can vote in person at ANY Vote Center location in Santa Clara County. Vote Centers are universal polling places and will be open several days.*
- ★ *Voters have more options to choose WHEN, WHERE, and HOW to vote. Check inside for more information.*



Voters have the option to view the County Voter Information Guide online.

Go Green—opt out of being mailed a paper copy of this guide by scanning the QR® code or visiting www.sccvote.org/gogreen.



County of Santa Clara Registrar of Voters

1555 Berger Drive, Building 2
San Jose, CA 95112

**(408) 299-VOTE (8683) or
Toll Free (866) 430-VOTE (8683)**



@sccvote



@sccvote



@sccvote



County Voter Information Guide

The County Voter Information Guide does not contain a complete list of candidates. A complete list of candidates appears on the sample of the ballot. Each candidate's statement is volunteered by the candidate and is printed at their expense.

This Guide contains pages regarding candidate statements and/or ballot measures, analyses, and arguments (whichever apply to your ballot). Arguments in support of or in opposition to proposed measures are the opinions of the authors and have not been checked for accuracy by any official agency.

Although the materials provided in this Guide have been carefully proofread, typographical errors occasionally remain undetected. If a substantive error is discovered after the Guide has been printed, a correction notice will be issued.

Language Assistance

The County of Santa Clara provides voting materials in English to all registered voters. In addition, as required by law, the Santa Clara County Registrar of Voters provides voting materials in Chinese, Spanish, Tagalog, and Vietnamese. Official Ballots are produced in the additional languages of Hindi, Japanese, Khmer, and Korean. Facsimile Ballots are available upon request in target areas in Gujarati, Nepali, Punjabi, Tamil, and Telugu languages. Voters may change their language preference at any time by calling the office or by mailing/faxing in a completed VOTER'S ACTION REQUEST FORM located in this Guide.

The office of the Registrar of Voters continues to prioritize multilingual services to improve services to all voters, including those who primarily speak another language other than English.

For language assistance, please call:

(408) 299-VOTE (8683)

or

(866) 430-VOTE (8683) toll free

or directly at

中文 (408) 282-3086

ESPAÑOL (408) 282-3095

TAGALOG (408) 282-3089

TIẾNG VIỆT (408) 282-3097

हिन्दी, 日本語, བོད་སྐད་ & 한국어 (408) 299-7655

ગુજરાતી, नेपाली, ਪੰਜਾਬੀ, தமிழ் & తెలుగు (408) 299-7655

Other Voter Resources



Disability Rights California Hotline – (888) 569-7955 toll free



Telecommunications Relay Service 711 – Assistive telephone relay service for people with impaired hearing.

VOTE 411

VOTE411.org is an interactive election website managed by the League of Women Voters Education Fund. It features non-partisan information about the candidates and measures on your ballot.

County of Santa Clara

Registrar of Voters

1555 Berger Drive, Bldg. 2
San Jose, CA 95112
Mailing Address: P.O. Box 611360, San Jose, CA 95161-1360
(408) 299-VOTE (8683) (866) 430-VOTE (8683) FAX: (408) 998-7314
www.sccvote.org



Dear Santa Clara County Voter,

I am honored to share with you this County Voter Information Guide for the November 5, 2024 General Election. With the Presidential election and numerous important state and local contests appearing on this ballot, it is important to make a voting plan to ensure that your voice is heard.

Make a Voting Plan

- **Make sure you are registered to vote at your current address:** You can look up your voter registration status on our website, www.sccvote.org. If you need to change your address or make other updates to your registration, download a Voter Action Request Form from our website. If you need to register or re-register to vote, go to registertovote.ca.org.
- **Know your voting options:** Every active registered voter will automatically be mailed a vote-by-mail ballot. If you prefer to vote in person or need additional assistance, you can go to any Vote Center in the county, which open as early as 10 days before the election. To find Vote Center and Drop Box locations, visit www.sccvote.org. Additional resources for language assistance and accessible voting options are also available.
- **Find trusted election information from official sources to make an informed decision:** This County Voter Information Guide serves as a source of trusted information to help you navigate the voting process and learn about the candidates and measures appearing on your ballot. Use this guide along with trusted information from other official sources, such as the State Voter Guide from the California Secretary of State, to make an informed decision on your ballot.

The Importance of Trusted Election Information

It's now more important than ever to make sure that you are using trusted election information from official, verified sources. There is so much information available to voters these days, especially online, which can make it difficult to know what you can trust. New and emerging technologies such as artificial intelligence can make it even more complicated.

That's why it's important to make sure you are getting trusted election information from official, reliable sources. This County Voter Information Guide and our website, www.sccvote.org, are a good start, along with the California Secretary of State's www.sos.ca.gov. Other official government sites like vote.gov and established, nonpartisan organizations like vote411.org can serve as trusted resources.

Remember, as an informed voter, it's important to be cautious to avoid misinformation and disinformation. If something seems surprising or suspicious, remember to check the source of the information before you share or repeat it. When in doubt, always fall back on trusted, official sources for verification.

If you have any questions about the voting process or need trusted election information, the Registrar of Voters' Office is here to help. Contact us by calling (408) 299-VOTE (8683) or Toll-Free at (866) 430-VOTE (8683), or by emailing registrar@rov.sccgov.org.

Matt Moreles
Acting Registrar of Voters

Board of Supervisors: Sylvia Arenas, Cindy Chavez, Otto Lee, Susan Ellenberg, S. Joseph Simitian
County Executive: James R. Williams

Information for Voters with Disabilities

REMOTE ACCESSIBLE VOTE BY MAIL SYSTEM (RAVBM)

Voters with disabilities can now vote privately and independently by marking their ballot in a screen-readable format from a home computer using their own assistive technology.

All voters are able to access their specific ballot by visiting www.sccvote.org/RAVBM starting 29 days before Election Day and entering their information through a secure portal. All ballots must be printed and follow the return instructions provided at the portal.



Voters can return their voted ballot by mail (must be postmarked by Election Day), or at any Official Ballot Drop Box, or at any Vote Center location.

Questions or comments? Email votebymail@rov.sccgov.org or call **(408) 299-VOTE (8683)** or toll free **(866) 430-VOTE (8683)**. Please visit www.sccvote.org/RAVBM for more information.

IN PERSON VOTING

The Registrar of Voters strives to provide Vote Center locations that are accessible to the elderly and voters with disabilities.

The County of Santa Clara's new electronic voting system gives visually impaired voters the ability to cast a secret ballot without assistance. The voting system is equipped with an audio voting component that allows voters to listen to the ballot and make their choices using the keypad provided. The keypad includes a "sip and puff" feature as well.

Voters who are unable to mark their ballot may bring up to two individuals to assist them in voting.

Audio recordings of the County Voter Information Guide are available at www.sccvote.org/RAVBM and upon request. Call (408) 299-VOTE (8683) or toll free (866) 430-VOTE (8683).



Telecommunications Relay Service 711 – Assistive telephone relay service for people with impaired hearing.

Are You Having Difficulty Voting Because of a Disability?

CALL: (888) 569-7955

**Disability Rights California operates a Voting Hotline:
7:00 a.m. to 8:00 p.m. on November 5, 2024 General Election.**



We also answer calls prior to and following Election Day. The Voting Hotline is available year-round.

Our goals are to help voters with disabilities have a successful voting experience and identify issues we can address in the current and future elections.

Paper Ballot Voting Instructions

How to Mark Your Paper Ballot:

- **Fill in the Oval completely** to the right of your selection
- When voting from home, use a black or blue ink pen. **NO RED INK**
- When voting at Vote Center, use marker provided
- Do not use check marks, X's, lines or circles
- No personal information or identification marks on your Official Ballot



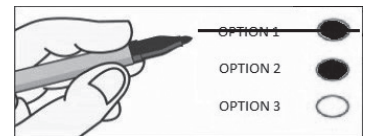
Write-In Voting:

- Print the name of the qualified write-in candidate in the blank space provided and fill in the oval completely to the right of the write-in space
- Do not write in a candidate name already printed on the ballot



Avoid Over-Voting. To ensure your vote counts, do not vote for more candidates than allowed for each contest.

If you make a **mistake**, request a replacement ballot or if there is not enough time to receive a replacement ballot by mail, you may correct it by crossing out the wrong choice and filling out the correct oval as shown in picture.



Voting at a Vote Center:

- Accessible voting
- Ballot marking devices
- Replacement ballots/Ballot Drop Box
- Election materials and language assistance
- Voter registration



Voting by Mail:

- For ballot replacement, call (408) 299-VOTE (8683) or toll free (866) 430-VOTE (8683)
- After completing your ballot, place your voted ballot into your return envelope provided, complete the envelope and **SIGN** your name by the red "X" in order for the ballot to be counted



Your voted ballot MUST be returned by 8 p.m. on Election Day OR postmarked on or before election day and received no later than 7 days after Election Day.

Deliver or mail your ballot early, so it can be included in the first Election Night Results!

Return Options:

- ✓ Mail your ballot. **No postage required**
- ✓ Return at any **Official Ballot Drop Box**
- ✓ Return at any **Vote Center**
- ✓ You may authorize in writing someone to return your ballot

Sign up for "Where's My Ballot?":

The County of Santa Clara is now offering a new way to track and receive notifications on the status of your vote-by-mail ballot. Powered by BallotTrax, **Where's My Ballot?** lets you know where your ballot is, and its status, every step of the way. Sign-up at **WheresMyBallot.sos.ca.gov** to receive automatic email, SMS (text), or voice call notifications about your ballot.

Track your ballot status at
www.sccvote.org



Scan this
barcode
with your
smart
phone.

SAMPLE OF BALLOT / BOLETA DE MUESTRA

Official Ballot / Boleta Oficial
General Election / Elección General

November 5, 2024 / 5 de noviembre de 2024

County of Santa Clara / Condado de Santa Clara

English / Spanish

CARD A

Instructions for voting:

To vote, completely fill in the oval to the right of your choice. Use a blue or black ink to mark your ballot. NO RED INK. Do not select more candidates than the number to be elected. You may vote in as many or as few contests as you want. A mistake in one contest does not affect the rest of the ballot.



Instrucciones para votar:

Para votar, complete en su totalidad el óvalo a la derecha de su selección. Utilice tinta azul o negra para marcar su boleta. NO UTILICE TINTA ROJA. No seleccione más candidatos que el número que debe elegir.

Puede votar en la cantidad de contiendas que desee. Un error en una contienda no afecta el resto de la boleta.

Write-in voting. To vote for a qualified write-in candidate whose name is not on the ballot, write the person's name in the blank space provided and FILL IN THE OVAL to the right. If you make a mistake, you may request a new ballot.



Voto por escrito: Para votar por un candidato calificado por

escrito cuyo nombre no aparece en la boleta, escriba el nombre de la persona en el espacio en blanco provisto y **LLENE EL ÓVALO** a la derecha. Si comete un error, puede solicitar una boleta nueva.

Party-Nominated Offices Cargos Nominados por los Partidos		
<p>Candidates for these offices are the official nominee of the party displayed with their name.</p> <p>Los candidatos para estos cargos son los nominados oficiales del partido que aparece con su nombre.</p>		
President and Vice President Presidente y Vicepresidente		
Vote for One Party Vote por Un Partido		
Jill Stein for President para Presidente Rudolph Ware for Vice President para Vicepresidente	Green Verde	
Donald J. Trump for President para Presidente JD Vance for Vice President para Vicepresidente	Republican Republicano	
Claudia De la Cruz for President para Presidente Karina Garcia for Vice President para Vicepresidente	Peace and Freedom Paz y Libertad	
Kamala D. Harris for President para Presidente Tim Walz for Vice President para Vicepresidente	Democratic Demócrata	
Robert F. Kennedy Jr. for President para Presidente Nicole Shanahan for Vice President para Vicepresidente	American Independent Independiente Americano	
Chase Oliver for President para Presidente Mike ter Maat for Vice President para Vicepresidente	Libertarian Libertario	
Voter-Nominated and Nonpartisan Offices Cargos Nominados por los Votantes y No Partidarios		
<p>Candidates display a party preference (or None) for the information of voters. This is not a party endorsement or approval.</p> <p>Los candidatos muestran una preferencia de partido (o Ninguna) para la información de los votantes. Esto no es un respaldo o una aprobación de un partido.</p>		
<p>There are two U.S. Senate contests on this ballot.</p> <ul style="list-style-type: none">One for the regular 6-year term ending January 3, 2031One for the remainder of the current term ending January 3, 2025 <p>You may vote for both contests.</p> <p>Se incluyen dos contiendas del Senado de los EE. UU. en esta boleta electoral.</p> <ul style="list-style-type: none">Una para el periodo ordinario de 6 años que termina el 3 de enero de 2031.Una para lo que resta del periodo actual que termina el 3 de enero de 2025. <p>Puede votar por las dos contiendas.</p>		
United States Senator Senador de los Estados Unidos		
Full Term Mandato Completo		
Vote for One Vote por Uno		
Adam B. Schiff Party Preference: Democratic Preferencia de Partido: Demócrata United States Representative Representante de Estados Unidos		
Steve Garvey Party Preference: Republican Preferencia de Partido: Republicano Professional Baseball Representative Representante de Béisbol Profesional		
Partial/Unexpired Term Mandato Parcial/No Expirado		
Vote for One Vote por Uno		
Adam B. Schiff Party Preference: Democratic Preferencia de Partido: Demócrata United States Representative Representante de Estados Unidos		
Steve Garvey Party Preference: Republican Preferencia de Partido: Republicano Professional Baseball Representative Representante de Béisbol Profesional		
United States Representative Representante de los Estados Unidos		
District 17 / Distrito 17		
Vote for One Vote por Uno		
Ro Khanna Party Preference: Democratic Preferencia de Partido: Demócrata United States Congressman Congresista de Estados Unidos		
Anita Chen Party Preference: Republican Preferencia de Partido: Republicano Educator/Entrepreneur Docente/Emprendedora		
Member of the State Assembly Miembro de la Asamblea Estatal		
District 24 / Distrito 24		
Vote for One Vote por Uno		
Bob Brunton Party Preference: Republican Preferencia de Partido: Republicano Small Business Owner Propietario de Pequeña Empresa		
Alex Lee Party Preference: Democratic Preferencia de Partido: Demócrata State Assemblymember Miembro de la Asamblea Estatal		
Judicial / Judicial		
Judge of the Superior Court, Office No. 5 Juez del Tribunal Superior, Cargo Núm. 5		
Vote for One Vote por Uno		
Johnene Linda Stebbins County of Santa Clara, Deputy District Attorney Delegada del Fiscal de Distrito del Condado de Santa Clara		
Jay Boyarsky County of Santa Clara, Chief Assistant District Attorney Fiscal Adjunto Jefe de Distrito del Condado de Santa Clara		

VOTE BOTH SIDES (OVER)
VOTE EN AMBOS LADOS (VER AL REVERSO)

SAMPLE OF BALLOT / BOLETA DE MUESTRA

CARD A

Official Ballot Continued / Boleta Oficial Continuación

English / Spanish

School / Escuela	
East Side Union High School District Distrito de Escuelas Secundarias Unión de East Side	
Governing Board Member Miembro de la Junta de Gobierno	
Vote for no more than Two Vote por no más de Dos	
Bryan Do Governing Board Member Miembro de la Junta de Gobierno	<input type="radio"/>
Patricia Martínez-Roach Retired Public Schoolteacher Maestra Jubilada de Escuela Pública	<input type="radio"/>
Rudy J. Rodriguez Governing Board Member Miembro de la Junta de Gobierno	<input type="radio"/>
Pattie Cortese East Side Union High School District Governing Board Member Miembro de la Junta de Gobierno, Distrito de Escuelas Secundarias Unión de East Side	<input type="radio"/>
	<input type="radio"/>
	<input type="radio"/>
Orchard School District Distrito Escolar de Orchard	
Governing Board Member Miembro de la Junta de Gobierno	
Vote for no more than Two Vote por no más de Dos	
Karl Raymond Jacobson Incumbent Titular	<input type="radio"/>
Virginia Varela-Campos Parent/Child Advocate Madre de Familia/Defensora de Niños	<input type="radio"/>
Diana Nazari Incumbent Titular	<input type="radio"/>
	<input type="radio"/>
	<input type="radio"/>

VOTE BOTH SIDES (OVER)
VOTE EN AMBOS LADOS (VER AL REVERSO)

SAMPLE OF BALLOT / BOLETA DE MUESTRA

County of Santa Clara / Condado de Santa Clara

CARD B

Official Ballot Continued / Boleta Oficial Continuación

November 5, 2024 General Election / 5 de noviembre de 2024 Elección General

English / Spanish

Measures Submitted to the Voters	
Medidas Sometidas a los Votantes	
State / Estatal	
<p>2 AUTHORIZES BONDS FOR PUBLIC SCHOOL AND COMMUNITY COLLEGE FACILITIES. LEGISLATIVE STATUTE.</p> <p>Authorizes \$10 billion in general obligation bonds for repair, upgrade, and construction of facilities at K-12 public schools (including charter schools), community colleges, and career technical education programs, including for improvement of health and safety conditions and classroom upgrades. Requires annual audits. Fiscal Impact: Increased state costs of about \$500 million annually for 35 years to repay the bond. Supporters: California Teachers Association; California School Nurses Organization; Community College League of California Opponents: Howard Jarvis Taxpayers Association</p> <p>AUTORIZA BONOS PARA INSTALACIONES DE ESCUELAS PÚBLICAS Y UNIVERSIDADES COMUNITARIAS. LEY LEGISLATIVA.</p> <p>Autoriza \$10 mil millones en bonos de obligaciones generales para la reparación, modernización y construcción de instalaciones en escuelas públicas K-12 (incluidas las escuelas autónomas), universidades comunitarias, y programas de educación técnica profesional, incluida la mejora de las condiciones de salud y seguridad y modernizaciones de las aulas. Requiere auditorías anuales. Impacto fiscal: Aumento de los costos del estado en unos \$500 millones al año por 35 años para pagar el bono. Partidarios: Asociación de Maestros de California; Organización de Enfermeras Escolares de California; Liga de Universidades Comunitarias de California Opositores: Howard Jarvis Taxpayers Association</p>	<p>3 CONSTITUTIONAL RIGHT TO MARRIAGE. LEGISLATIVE CONSTITUTIONAL AMENDMENT. Amends California Constitution to recognize fundamental right to marry, regardless of sex or race. Removes language in California Constitution stating that marriage is only between a man and a woman. Fiscal Impact: No change in revenues or costs for state and local governments. Supporters: Sierra Pacific Synod of The Evangelical Lutheran Church in America; Dolores Huerta Foundation; Equality California Opponents: Jonathan Keller, California Family Council; Rev. Tanner DiBella</p> <p>DERECHO CONSTITUCIONAL AL MATRIMONIO. ENMIENDA LEGISLATIVA CONSTITUCIONAL. Enmienda la Constitución de California para reconocer el derecho fundamental al matrimonio, independientemente del sexo o la raza. Elimina el texto de la Constitución de California que indica que el matrimonio es solo entre un hombre y una mujer. Impacto fiscal: Sin cambio en los ingresos o costos para los gobiernos estatales y locales. Partidarios: Sínodo Sierra Pacific de la Iglesia Evangélica Luterana de Estados Unidos; Fundación Dolores Huerta; Organización Equality California Opositores: Jonathan Keller, Consejo de las Familias de California; Rev. Tanner DiBella</p>
	Yes / Sí <input type="radio"/>
	No / No <input type="radio"/>
Yes / Sí <input type="radio"/>	
No / No <input type="radio"/>	

VOTE BOTH SIDES (OVER)
VOTE EN AMBOS LADOS (VER AL REVERSO)

SAMPLE OF BALLOT / BOLETA DE MUESTRA

CARD BOfficial Ballot Continued / Boleta Oficial ContinuaciónEnglish / Spanish

Measures Submitted to the Voters Medidas Sometidas a los Votantes	
State / Estatal	
<div><div>4</div><div><div>AUTHORIZES BONDS FOR SAFE DRINKING WATER, WILDFIRE PREVENTION, AND PROTECTING COMMUNITIES AND NATURAL LANDS FROM CLIMATE RISKS. LEGISLATIVE STATUTE. Authorizes \$10 billion in general obligation bonds for water, wildfire prevention, and protection of communities and lands. Requires annual audits. Fiscal Impact: Increased state costs of about \$400 million annually for 40 years to repay the bond. Supporters: Clean Water Action; CALFIRE Firefighters; National Wildlife Federation; The Nature Conservancy Opponents: Howard Jarvis Taxpayers Association</div><div>AUTORIZA LOS BONOS PARA AGUA POTABLE SEGURA, PREVENCIÓN DE INCENDIOS FORESTALES Y PROTECCIÓN DE LAS COMUNIDADES Y LAS TIERRAS NATURALES CONTRA LOS RIESGOS CLIMÁTICOS. LEY LEGISLATIVA. Autoriza \$10 mil millones en bonos de obligaciones generales para agua, prevención de incendios forestales y protección de comunidades y tierras. Requiere auditorías anuales. Impacto fiscal: Aumento de los costos del estado en unos \$400 millones al año por 40 años para pagar el bono. Partidarios: Acción por el Agua Limpia; Bomberos de CALFIRE; Federación Nacional de la Vida Salvaje; Conservación de la Naturaleza Opositores: Howard Jarvis Taxpayers Association</div></div></div>	Yes / Sí
No / No	
<div><div>5</div><div><div>ALLOWS LOCAL BONDS FOR AFFORDABLE HOUSING AND PUBLIC INFRASTRUCTURE WITH 55% VOTER APPROVAL. LEGISLATIVE CONSTITUTIONAL AMENDMENT. Allows approval of local infrastructure and housing bonds for low- and middle-income Californians with 55% vote. Accountability requirements. Fiscal Impact: Increased local borrowing to fund affordable housing, supportive housing, and public infrastructure. The amount would depend on decisions by local governments and voters. Borrowing would be repaid with higher property taxes. Supporters: California Professional Firefighters; League of Women Voters of California; Habitat for Humanity California Opponents: California Taxpayers Association; California Hispanic Chambers of Commerce; Women Veterans Alliance</div><div>PERMITE BONOS LOCALES PARA VIVIENDAS ASEQUIBLES E INFRAESTRUCTURAS PÚBLICAS CON LA APROBACIÓN DEL 55 % DE LOS VOTANTES. ENMIENDA LEGISLATIVA CONSTITUCIONAL. Permite la aprobación de bonos locales de infraestructura y vivienda para californianos de ingresos bajos y medianos con un 55 % de los votos. Requisitos de responsabilidad. Impacto fiscal: Aumento de los préstamos locales para financiar la vivienda asequible, la vivienda de apoyo y la infraestructura pública. La cantidad dependerá de las decisiones de los gobiernos locales y los votantes. Los préstamos se devolverán con el aumento de los impuestos a la propiedad. Partidarios: Bomberos Profesionales de California; Liga de Mujeres Votantes de California; Hábitat para la Humanidad California Opositores: Asociación de Contribuyentes de California; Cámaras de Comercio de Hispanos de California; Alianza de Mujeres Veteranas</div></div></div>	Yes / Sí
No / No	
<div><div>6</div><div><div>ELIMINATES CONSTITUTIONAL PROVISION ALLOWING INVOLUNTARY SERVITUDE FOR INCARCERATED PERSONS. LEGISLATIVE CONSTITUTIONAL AMENDMENT. Amends the California Constitution to remove current provision that allows jails and prisons to impose involuntary servitude to punish crime (<i>i.e.</i>, forcing incarcerated persons to work). Fiscal Impact: Potential increase or decrease in state and local costs, depending on how work for people in state prison and county jail changes. Any effect likely would not exceed the tens of millions of dollars annually. Supporters: Assemblymember Lori Wilson Opponents: None submitted</div><div>ELIMINA LA DISPOSICIÓN CONSTITUCIONAL QUE PERMITE LA SERVIDUMBRE INVOLUNTARIA PARA LAS PERSONAS EN PRISIÓN. ENMIENDA LEGISLATIVA CONSTITUCIONAL. Enmienda la Constitución de California para eliminar la disposición actual que permite a las cárceles y prisiones imponer una servidumbre involuntaria para castigar el delito (<i>es decir</i>, obligar a trabajar a las personas en prisión). Impacto fiscal: Aumento o reducción potencial de los costos estatales y locales, dependiendo del cambio de las reglas sobre el trabajo para las personas en prisiones estatales y cárceles del condado. Cualquier efecto probablemente no excedería las decenas de millones de dólares al año. Partidarios: Miembro de la Asamblea Lori Wilson Opositores: No se realizaron presentaciones</div></div></div>	Yes / Sí
No / No	
<div><div>32</div><div><div>RAISES MINIMUM WAGE. INITIATIVE STATUTE. Raises minimum wage as follows: For employers with 26 or more employees, to \$17 immediately, \$18 on January 1, 2025. For employers with 25 or fewer employees, to \$17 on January 1, 2025, \$18 on January 1, 2026. Fiscal Impact: State and local government costs could increase or decrease by up to hundreds of millions of dollars annually. State and local revenues likely would decrease by no more than a few hundred million dollars annually. Supporters: None submitted Opponents: California Chamber of Commerce; California Restaurant Association; California Grocers Association</div><div>AUMENTA EL SALARIO MÍNIMO. INICIATIVA DE LEY. Aumenta el salario mínimo de la siguiente forma: Para los empleadores con 26 o más empleados, a \$17 de inmediato, a \$18 el 1 de enero de 2025. Para los empleadores con 25 o menos empleados, a \$17 el 1 de enero de 2025, a \$18 el 1 de enero de 2026. Impacto fiscal: Los costos del gobierno estatal y local podrían aumentar o reducirse en cientos de millones de dólares al año. Los ingresos estatales y locales probablemente se reducirían en unos cuantos cientos de millones de dólares al año como máximo. Partidarios: No se realizaron presentaciones Opositores: Cámara de Comercio de California; Asociación de Restaurantes de California; Asociación de Comerciantes de Alimentos de California</div></div></div>	Yes / Sí
No / No	

VOTE BOTH SIDES (OVER)
VOTE EN AMBOS LADOS (VER AL REVERSO)

SAMPLE OF BALLOT / BOLETA DE MUESTRA

CARD C	County of Santa Clara / Condado de Santa Clara	
	Official Ballot Continued / Boleta Oficial Continuación	
	November 5, 2024 General Election / 5 de noviembre de 2024 Elección General	English / Spanish
Measures Submitted to the Voters / Medidas Sometidas a los Votantes		
State / Estatal		
<div><div>33</div><div><p>EXPANDS LOCAL GOVERNMENTS' AUTHORITY TO ENACT RENT CONTROL ON RESIDENTIAL PROPERTY. INITIATIVE STATUTE. Repeals Costa-Hawkins Rental Housing Act of 1995, which currently prohibits local ordinances limiting initial residential rental rates for new tenants or rent increases for existing tenants in certain residential properties. Fiscal Impact: Reduction in local property tax revenues of at least tens of millions of dollars annually due to likely expansion of rent control in some communities.</p><p>Supporters: CA Nurses Assoc.; CA Alliance for Retired Americans; Mental Health Advocacy; Coalition for Economic Survival; TenantsTogether</p><p>Opponents: California Council for Affordable Housing; Women Veterans Alliance; California Chamber of Commerce</p><p>EXPANDE LA AUTORIDAD DE LOS GOBIERNOS LOCALES DE PROMULGAR EL CONTROL DE LA RENTA EN PROPIEDADES RESIDENCIALES. INICIATIVA DE LEY. Revoca la Ley de Viviendas de Renta de Costa-Hawkins de 1995, que actualmente prohíbe que las ordenanzas locales limiten las tarifas iniciales de renta residencial para nuevos inquilinos o aumentos de renta para inquilinos existentes en ciertas propiedades residenciales. Impacto fiscal: Reducción de los ingresos por los impuestos locales sobre la propiedad en al menos decenas de millones de dólares al año debido a la probable expansión del control de la renta en algunas comunidades.</p><p>Partidarios: Asociación de Enfermeras de CA; Alianza para Americanos Jubilados de CA; Defensa de la Salud Mental; Coalición para la Supervivencia Económica; TenantsTogether</p><p>Opositores: Consejo de California para la Vivienda Asequible; Alianza de Mujeres Veteranas; Cámara de Comercio de California</p></div></div>		
		Yes / Sí <input type="radio"/>
		No / No <input type="radio"/>
<div><div>34</div><div><p>RESTRICTS SPENDING OF PRESCRIPTION DRUG REVENUES BY CERTAIN HEALTH CARE PROVIDERS. INITIATIVE STATUTE. Requires certain providers to spend 98% of revenues from federal discount prescription drug program on direct patient care. Authorizes statewide negotiation of Medi-Cal drug prices. Fiscal Impact: Increased state costs, likely in the millions of dollars annually, to enforce new rules on certain health care entities. Affected entities would pay fees to cover these costs.</p><p>Supporters: The ALS Association; California Chronic Care Coalition; Latino Heritage Los Angeles</p><p>Opponents: National Org. for Women; Consumer Watchdog; Coalition for Economic Survival; AIDS Healthcare Foundation; Dolores Huerta</p><p>RESTRINGE EL GASTO DE LOS INGRESOS DE MEDICAMENTOS RECETADOS POR PARTE DE CIERTOS PROVEEDORES DEL CUIDADO DE LA SALUD. INICIATIVA DE LEY. Requiere que ciertos proveedores gasten el 98 % de los ingresos del programa federal de descuento en medicamentos recetados en atención directa al paciente. Autoriza la negociación en todo el estado de los precios de medicamentos de Medi-Cal. Impacto fiscal: Aumento de los costos estatales, probablemente en millones de dólares al año, para aplicar las nuevas reglas a ciertas entidades de cuidado de la salud. Las entidades afectadas pagarían tarifas para cubrir estos costos.</p><p>Partidarios: Asociación ALS; Coalición de California para los Cuidados Crónicos; Herencia Latina Los Angeles</p><p>Opositores: Organización Nacional para la Mujer; Defensor de los Consumidores; Coalición para la Supervivencia Económica; Fundación para los Cuidados del AIDS; Dolores Huerta</p></div></div>		
		Yes / Sí <input type="radio"/>
		No / No <input type="radio"/>
<div><div>35</div><div><p>PROVIDES PERMANENT FUNDING FOR MEDI-CAL HEALTH CARE SERVICES. INITIATIVE STATUTE. Makes permanent the existing tax on managed health care insurance plans, which, if approved by the federal government, provides revenues to pay for Medi-Cal health care services. Fiscal Impact: Short-term state costs between roughly \$1 billion and \$2 billion annually to increase funding for certain health programs. Total funding increase between roughly \$2 billion to \$5 billion annually. Unknown long-term fiscal effects.</p><p>Supporters: Planned Parenthood Affiliates of CA; American College of Obstetricians & Gynecologists; American Academy of Pediatrics, CA</p><p>Opponents: None submitted</p><p>PROPORCIONA FONDOS PERMANENTES PARA LOS SERVICIOS DE SALUD DE MEDI-CAL. INICIATIVA DE LEY. Establece como permanente el impuesto existente a los planes administrados de seguro de salud que, si se aprueba por el gobierno federal, proporciona ingresos para pagar los servicios de cuidado de la salud de Medi-Cal. Impacto fiscal: Costos estatales a corto plazo de entre aproximadamente \$1 mil millones y \$2 mil millones al año a fin de aumentar los fondos para ciertos programas de salud. Los fondos totales aumentarán entre aproximadamente \$2 mil millones y \$5 mil millones al año. No se conocen los efectos fiscales a largo plazo.</p><p>Partidarios: Filiales de Planned Parenthood de CA; Colegio Americano de Obstetras y Ginecólogos; Academia Americana de Pediatría, CA</p><p>Opositores: No se realizaron presentaciones</p></div></div>		
		Yes / Sí <input type="radio"/>
		No / No <input type="radio"/>
<div><div>36</div><div><p>ALLOWS FELONY CHARGES AND INCREASES SENTENCES FOR CERTAIN DRUG AND THEFT CRIMES. INITIATIVE STATUTE. Allows felony charges for possessing certain drugs and for thefts under \$950, if defendant has two prior drug or theft convictions. Fiscal Impact: State criminal justice costs likely ranging from several tens of millions of dollars to the low hundreds of millions of dollars annually. Local criminal justice costs likely in the tens of millions of dollars annually.</p><p>Supporters: Crime Victims United of California; California District Attorneys Association; Family Business Association of California</p><p>Opponents: Diana Becton, District Attorney Contra Costa County; Crime Survivors for Safety and Justice</p><p>PERMITE CARGOS DE DELITO GRAVE Y AUMENTA LAS SENTENCIAS POR CIERTOS DELITOS RELACIONADOS CON DROGAS Y HURTO. INICIATIVA DE LEY. Permite cargos de delito grave por posesión de ciertas drogas y hurto menor a \$950, si el acusado tiene dos condenas anteriores por drogas o hurto. Impacto fiscal: Los costos estatales de la justicia penal probablemente oscilen entre varias decenas de millones de dólares y unos pocos cientos de millones de dólares al año. Costos de la justicia penal local probablemente de decenas de millones de dólares al año.</p><p>Partidarios: Víctimas del Crimen Unidas de California; Asociación de Fiscales de Distrito de California; Asociación de Empresas Familiares de California</p><p>Opositores: Diana Becton, Fiscal de Distrito del Condado de Contra Costa; Sobrevivientes del Crimen por la Seguridad y la Justicia</p></div></div>		
		Yes / Sí <input type="radio"/>
		No / No <input type="radio"/>

VOTE BOTH SIDES (OVER)
VOTE EN AMBOS LADOS (VER AL REVERSO)

SAMPLE OF BALLOT / BOLETA DE MUESTRA

School / Escuela	
East Side Union High School District / Distrito de Escuelas Secundarias Unión de East Side	
<p>N With funds that cannot be taken by the State and spent elsewhere, shall East Side Union High School District's parcel tax to protect career technical education and college preparation programs and maintain competitive wages and benefits for teachers and staff at Andrew Hill, Calero, Evergreen Valley, Foothill, Independence, James Lick, Mt. Pleasant, Oak Grove, Piedmont Hills, Santa Teresa, Silver Creek, Yerba Buena and W.C. Overfelt High Schools be adopted at \$49 per parcel, raising \$6.4 million annually for five years, with senior exemptions and full public disclosure of all spending?</p> <p>Supporters: Blanca Alvarado, Fmr SCC Sup; Jon Reinke, Taxpayer; Binh Nguyen, Ret General; Victor Garza, Comm Advocate; Joe Dam, Tax Prep.</p> <p>Opponents: None submitted.</p> <p>Con fondos que no pueden ser tomados por el Estado ni gastados en otros lugares, ¿debe adoptarse el impuesto parcelario del Distrito de Escuelas Secundarias Unión de East Side para proteger los programas de educación técnica profesional y preparación universitaria, y mantener salarios competitivos y beneficios para maestros y personal en las Escuelas Secundarias Andrew Hill, Calero, Evergreen Valley, Foothill, Independence, James Lick, Mt. Pleasant, Oak Grove, Piedmont Hills, Santa Teresa, Silver Creek, Yerba Buena y W.C. Overfelt, de \$49 por parcela, recaudando \$6.4 millones anuales durante cinco años, con exenciones para personas mayores y divulgación pública completa de todos los gastos?</p> <p>Partidarios: Blanca Alvarado, Ex Supervisora de SCC; Jon Reinke, Contribuyente; Binh Nguyen, General Jubilado; Victor Garza, Defensor Comunitario; Joe Dam, Preparador de Impuestos.</p> <p>Opositores: No se presentó ninguno.</p>	
Yes / Sí <input type="radio"/>	
No / No <input type="radio"/>	
Orchard School District Distrito Escolar de Orchard	
<p>GG To provide a safe, modern neighborhood school; fix deteriorating roofs, plumbing, electrical, heating and cooling systems; upgrade classrooms; improve student safety and security systems; repair, construct, acquire classrooms, equipment, sites and facilities; shall Orchard School District's measure be adopted authorizing \$30,000,000 in bonds at legal rates, levying \$12 per \$100,000 assessed value (\$2,800,000 annually) while bonds are outstanding, with independent audits, citizen oversight, public disclosure of all spending and all money locally controlled?</p> <p>Supporters: Orchard Teacher Association.</p> <p>Opponents: None submitted.</p> <p>Para proporcionar una escuela de vecindario segura y moderna; reparar los tejados deteriorados, la fontanería, los sistemas eléctricos, de calefacción y refrigeración; modernizar las aulas; mejorar la seguridad de los estudiantes y los sistemas de seguridad; reparar, construir, adquirir aulas, equipos, terrenos e instalaciones; ¿debe adoptarse la medida del Distrito Escolar de Orchard que autoriza \$30,000,000 en bonos a tasas legales, recaudando \$12 por cada \$100,000 de valor catastral (\$2,800,000 anuales) mientras los bonos estén pendientes, con auditorías independientes, supervisión ciudadana, divulgación pública de todos los gastos y todo el dinero controlado localmente?</p> <p>Partidarios: Asociación de Maestros de Orchard.</p> <p>Opositores: No se presentó ninguno.</p>	
Bonds—Yes / Bonos—Sí <input type="radio"/>	
Bonds—No / Bonos—No <input type="radio"/>	

VOTE BOTH SIDES (OVER)
VOTE EN AMBOS LADOS (VER AL REVERSO)

Office of United States Senate Contests Notice:

There are two U.S. Senate contests on the November 5, 2024 General Election ballot.

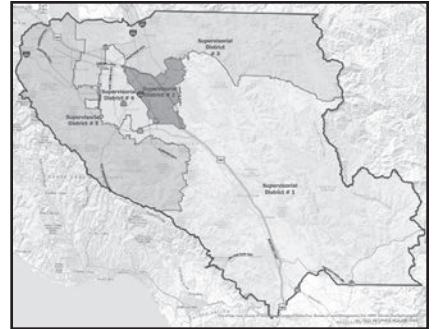
The first contest is the regular election for the full 6-year term ending January 3, 2031.

The second contest is a special vacancy election (the current officeholder is temporarily filling a vacancy) for the remainder of the current term ending January 3, 2025.

You may vote for both contests.

Redistricting

Every ten years following the census, California's district lines are redrawn. This election uses the new district lines for Congress, State Senate, State Assembly, State Board of Equalization District 2, County Board of Supervisors, and Cities. You may find you do not live in the same districts you did the last time you voted. Because of this, your ballot may have different contests and candidates than you are used to seeing; and in some cases, your previous representative may not be a candidate for your new district.



Voters may look up their election districts by visiting www.sccvote.org and selecting the icon “Look Up Your District” under our Popular Services link on our home page. Voters can also access a list of their elected representatives within Santa Clara County at www.sccvote.org under the “Candidates & Measures” drop down menu by selecting the List of Officeholders.

Please visit <https://sccvote.sccgov.org/elections/redistricting> for more information about redistricting.

If you need additional information, please call toll-free (866) 430-VOTE (8683).

IMPORTANT INFORMATION FOR VOTERS

Top Two Candidates Open Primary Act: Proposition 14, passed by voters in 2010, changed the way primary elections are conducted in California. All "partisan" offices, except for President and party central committee, are now "voter-nominated" offices.

- You may choose any candidate running for a voter-nominated office, regardless of the party you or the candidate prefers.
- For this election, United States Senate, United States Representative, State Senate, and State Assembly are voter-nominated offices.
- The two candidates with the highest number of votes in the primary election, regardless of party preference, go on to the general election ballot. There may be two candidates with the same party preference on your ballot for some voter-nominated offices.

PARTY ENDORSEMENTS

California law authorizes political parties to endorse candidates running for voter-nominated offices. Parties not listed below did not submit endorsements for voter-nominated offices within Santa Clara County by the deadline.

REPUBLICAN: Anita Chen (U.S. Rep. 17), Peter D. Hernandez (U.S. Rep. 18), Jason Michael Anderson (U.S. Rep. 19), Alexander Glew (State Senate 13), Robert Paul Howell (State Senate 15), Bob Brunton (24th Assembly), Ted Stroll (25th Assembly), Liz Lawler (28th Assembly), J.W. Paine (29th Assembly)

AMERICAN INDEPENDENT: Sam Liccardo (U.S. Rep. 16), Anita Chen (U.S. Rep. 17), Peter D. Hernandez (U.S. Rep. 18), Jason Michael Anderson (U.S. Rep. 19), Josh Becker (State Senate 13), Robert Paul Howell (State Senate 15), Lydia Kou (23rd Assembly), Bob Brunton (24th Assembly), Patrick Ahrens (26th Assembly), J.W. Paine (29th Assembly)

DEMOCRATIC: Kamala D. Harris/Tim Walz (Pres./V.P.), Adam B. Schiff (U.S. Senate), Evan Low (U.S. Rep. 16), Ro Khanna (U.S. Rep. 17), Zoe Lofgren (U.S. Rep. 18), Jimmy Panetta (U.S. Rep. 19), Josh Becker (State Senate 13), Dave Cortese (State Senate 15), Marc Berman (23rd Assembly), Alex Lee (24th Assembly), Ash Kalra (25th Assembly), Patrick Ahrens (26th Assembly), Gail Pellerin (28th Assembly), Robert Rivas (29th Assembly)

VOLUNTARY SPENDING LIMITS

Pursuant to Proposition 34, adopted November 7, 2000, the following candidates have accepted voluntary spending limits and are eligible to submit a candidate statement. This list of candidates is provided by the Secretary of State's Office and may have been updated after this guide was printed. Please visit www.sos.ca.gov and search for Proposition 34 Candidate Statements, to view the most current *November 5, 2024 General Election Legislative Candidates Form 501 Status Report*, available as a PDF.

Office			Candidate Name	Party Preference	Office			Candidate Name	Party Preference
Senate	13		Josh Becker	Democratic	Assembly	25		Ash Kalra	Democratic
Senate	13		Alexander Glew	Republican	Assembly	25		Ted Stroll	Republican
Senate	15		Robert Paul Howell	Republican	Assembly	26		Patrick Ahrens	Democratic
Senate	15		Dave Cortese	Democratic	Assembly	26		Tara Sreekrishnan	Democratic
Assembly	23		Marc Berman	Democratic	Assembly	28		Liz Lawler	Republican
Assembly	23		Lydia Kou	Democratic	Assembly	28		Gail Pellerin	Democratic
Assembly	24		Bob Brunton	Republican	Assembly	29		J.W. Paine	Republican
Assembly	24		Alex Lee	Democratic					

**CANDIDATE STATEMENTS FOR
UNITED STATES REPRESENTATIVE, DISTRICT 17**

ANITA CHEN

Occupation: Educator/Entrepreneur

Age: 27

Education and Qualifications:

I'm not a politician. I'm an educator and entrepreneur, helping struggling students become confident communicators.

But when I found that 80% of child sex trafficking victims in the U.S. are American youth, I knew someone had to speak for them. In my research, I found that the major contributors to sex trafficking are the issues that concern us all.

High inflation means financial and housing insecurity. Crime without consequence means feeling unsafe in our communities. Political correctness sacrifices academic excellence. Illegal immigration strains our social systems at the expense of legal immigrants and citizens. An open border invites fentanyl deaths and trafficking victims. Criminals exploit these vulnerabilities for their own profit.

This can't happen anymore. One-sided policies dishonor our diversity, while partisan politics undermine our shared heritage. From the Valley of the Heart's Delight to today's Silicon Valley, we represent the best of American industry and innovation. We are the wealthiest district in America with the highest percentage of immigrants and we must be allowed to be who we are: creative problem solvers. We can leverage tech to save cost and time, and deliver justice to the most vulnerable. Our voice now needs to be heard in D.C.

When I talk to students, parents, seniors, teachers, police officers, engineers, and people from all walks of life, the message is the same: "We feel voiceless." I merely aim to be our voice. As every good engineer knows, it is possible to transform our biggest pain points into our greatest successes.

**CANDIDATE STATEMENTS FOR
JUDGE OF THE SUPERIOR COURT, OFFICE NO. 5**

JAY BOYARSKY	JOHNENE LINDA STEBBINS
<p>Occupation: Chief Assistant District Attorney, County of Santa Clara Age: 58</p> <p>Education and Qualifications:</p> <p>I am the son of working-class parents. My Mom helped in the school library and my Dad was a union printer. They taught me right from wrong and to treat all people with dignity and respect.</p> <p>As a prosecutor for 30 years, I am passionate about justice, especially protecting children. Early in my career, a horrible man raped a 7-year-old girl. For 8 years, she hid the crimes against her because the attacker threatened her family. I worked hard. But the case was dismissed on a technicality. That was wrong. I worked tirelessly to change the law. "Maricela's Law" made it easier to prosecute rapists and child molesters.</p> <p>I worked my way up and today I am District Attorney Jeff Rosen's second-in-command, running the largest DA's Office in Northern California. I oversee the prosecutions of murderers, rapists, racists, and environmental polluters. Sheriff Bob Jonsen, the San Jose Police Officers' Association, and the Santa Clara County Deputy Sheriffs' Association endorse me because I'm committed to public safety.</p> <p>Endorsed by Planned Parenthood Advocates Mar Monte, BAYMEC, La Raza, and the Mercury News: "He's the person who makes the office run."</p> <p>Endorsed by DA Jeff Rosen, Congresswoman Anna Eshoo, San Jose Mayors Matt Mahan, Sam Liccardo, Supervisors Cindy Chavez, Susan Ellenberg, Otto Lee, Joe Simitian, Legislators Becker, Berman, Cortese, Evan Low, and 29 current and former judges. www.jayboyarsky.com</p>	<p>Occupation: County of Santa Clara, Deputy District Attorney Age: 55</p> <p>Education and Qualifications:</p> <p>Santa Clara prosecutor for 26 years, women's rights advocate, and the choice for public safety and victims' rights organizations. Endorsed by Judge Vincent Chiarello to replace him for Superior Court Judge Seat #5.</p> <p>A Deputy District Attorney, wife and mother of three, and lifelong resident of Santa Clara County, Johnene has prosecuted thousands of cases including homicide, child molestation, sexual assault, domestic violence, and elder abuse. She has dedicated her career to fighting for public safety, championing victims' rights, while embracing fairness, compassion and rehabilitation. Endorsed by All county law enforcement agencies including Deputy Sheriffs, Police Officers' Associations of San Jose, Santa Clara, Los Gatos, Gilroy, Milpitas, Sunnyvale, Morgan Hill, Campbell, Los Altos, Palo Alto, Mountain View and County Corrections; firefighters, judges, community leaders, and public defenders.</p> <p>Johnene is recognized for her steadfast commitment to the prosecution of environmental crimes; Instructs statewide, nationally and internationally on investigations of sexual assault and internet crimes against children.</p> <p>Judge David Cena: "Johnene possesses a deep understanding of the legal system and an unwavering commitment to justice. She will be an outstanding, intelligent and fair judge."</p> <p>Sheriff Charles Gillingham (ret.) "Her track record as a prosecutor is exemplary; Deputy District Attorney Johnene Stebbins consistently demonstrates qualities we need in a judge—intelligence, integrity, and an unshakeable commitment to public safety and fairness." www.johnenelindastebbinsforjudge.org</p>

**CANDIDATE STATEMENTS FOR
GOVERNING BOARD MEMBER, EAST SIDE UNION HIGH SCHOOL DISTRICT**

BRYAN DO	PATTIE CORTESE
<p>Occupation: Governing Board Member Age: 50</p> <p>Education and Qualifications:</p> <p>Bryan Do has called San José home since escaping communism to find freedom and opportunity in America. Even at a young age, he has generally held 2 to 3 jobs simultaneously to support his family and save for his education.</p> <p>Decades before Bryan Do was elected to the Board of Trustees at East Side Union High School District, his father was a classified employee at the District serving in various roles before completing his master's degree and becoming a teacher in San José. During his tenure as a Governing Board Member, Bryan worked to protect our children's well-being while expanding opportunities that give all our students a chance to become full participants in the global economy. He values a common sense approach of accountability and respect for education and educators. He encourages his Board colleagues and the District to define the key objectives, and then measure the results quantitatively and qualitatively so that the District can continue to improve services to our students and the public. His notable endorsements include San José Mayor Matt Mahan and the Teacher's Association at East Side Union High School District (ESTA).</p> <p>Bryan Do respectfully asks for your vote to continue to serve our students and community.</p>	<p>Occupation: Governing Board Member, East Side Union High School District</p> <p>Education and Qualifications:</p> <p>It's a joy to serve on the East Side Union High School District Board because I love this community, especially our students and families. I wish to continue serving you and our students, re-investing what I've learned about improving academic outcomes for students these past 9½ years. The challenges for education are huge—from supporting teachers in the face of decreasing funding, to the continuing after-effects of the pandemic.</p> <p>I'm proud of the accomplishments we've achieved as a district: Balancing our budget without laying off teachers. Consecutive years of clean financial audits. Creating an academic early-warning system to keep students on track.</p> <p>Volunteering in school-based mentoring programs, I have witnessed miracles when adults believe in youth more than they believe in themselves. This is at the heart of closing the achievement gap.</p> <p>I promise to continue earning and keeping your trust, making vital decisions to ensure the quality of our children's education while keeping them and our community safe. I'll also continue bringing tools to ESUHS to ensure that every student graduates with big dreams and a foundation for fulfilling them.</p> <p>I am supported by students, graduates, parents, teachers and staff. I respectfully ask for your vote. Thank you! Please visit www.pattiecortese.com.</p>

**CANDIDATE STATEMENTS FOR
GOVERNING BOARD MEMBER, ORCHARD SCHOOL DISTRICT**

KARL RAYMOND JACOBSON

Occupation: Inventor/Science Educator/Programmer

Education and Qualifications:

This is expensive. It is worth the expense even though I am already on the Board. We decide how to allocate budget. I always push for improving the school. I always push to save our taxpayer money. The other incumbent is wasteful without even knowing the full issues. I analyze and argue details and fight hard, always, to keep our taxes low. I am the only member who pushed for years to include advanced math! Superintendent now made it happen. It is great for all our kids to have this opportunity. Advanced Science and Engineering at our school, band, and art, are all things I pushed hard for and have gotten. We are improving during my 9 years so far. I can and will continue to make our school better, for our kids, and for our community. My background is Biology, Computer Science, Law degree, and MBA school. I was a senior engineer at Intel. I quickly turned many C students into A students reasonably. I cut this proposed bond we need in half to 30 million dollars for the school. Keep me on, and I will make sure the school improves and stays within budget. Vote for Jacobson. Jacobson.

**EAST SIDE UNION HIGH SCHOOL DISTRICT
MEASURE N**

With funds that cannot be taken by the State and spent elsewhere, shall East Side Union High School District's parcel tax to protect career technical education and college preparation programs and maintain competitive wages and benefits for teachers and staff at Andrew Hill, Calero, Evergreen Valley, Foothill, Independence, James Lick, Mt. Pleasant, Oak Grove, Piedmont Hills, Santa Teresa, Silver Creek, Yerba Buena and W.C. Overfelt High Schools be adopted at \$49 per parcel, raising \$6.4 million annually for five years, with senior exemptions and full public disclosure of all spending?

Yes
No

**COUNTY COUNSEL'S IMPARTIAL ANALYSIS OF
MEASURE N**

A school district may levy a qualified special tax upon approval by two-thirds of the votes cast on a measure pursuant to section 4 of article XIII A of the California Constitution and California Government Code section 50079. The Board of Trustees (Board) of the East Side Union High School District (District) has placed on the ballot a measure to enact a \$49 per year parcel tax. If approved by the voters, the tax would commence in the 2025-2026 fiscal year, and continue for five (5) years.

State law requires such measures to state the specific purposes for which the tax proceeds will be used and that the District spend the proceeds of the tax only for these purposes. The stated purposes of the tax proposed by Measure N are to:

- Maintain and protect vital educational programs and classes, including expanding college readiness classes and vocational and career training programs;
- Attract and retain qualified, high-performing teachers, staff, and counselors; and
- Support competitive wages and benefits and expand access to resources for teachers and staff.

The Measure states that tax proceeds shall not be used for administrators' salaries, benefits, or pensions. Pursuant to State law, the Measure provides additional accountability measures for the proceeds, including (1) depositing the proceeds into a fund that is separate from other District funds, and (2) providing an annual written report to the Board detailing the amount of funds collected and expended and the status of any projects, programs, and purposes required or authorized to be funded from the tax proceeds as identified in the Measure. The Measure states that the Board will also appoint a citizens' oversight committee to review tax expenditures to ensure funds are spent only for the purposes approved by the voters and to provide an annual report to the Board and community on such expenditures.

The Measure states that the proposed tax does not apply to property that is otherwise exempt from property taxes. The Measure also states that an exemption will be available, upon application to the District, for any parcel used as an owner-occupied principal residence of persons 65 years of age or older.

**COUNTY COUNSEL'S IMPARTIAL ANALYSIS OF
MEASURE N-Continued**

A "yes" vote is a vote to approve a tax of \$49 per parcel on parcels within the District for five years, beginning with the 2025-2026 fiscal year.

A "no" vote is a vote to not approve the tax.

Tony LoPresti
County Counsel

By: Nick DeFiesta
Deputy County Counsel

COMPLETE TEXT OF MEASURE N

INTRODUCTION

"With funds that cannot be taken by the State and spent elsewhere, shall East Side Union High School District's parcel tax to protect career technical education and college preparation programs and maintain competitive wages and benefits for teachers and staff at Andrew Hill, Calero, Evergreen Valley, Foothill, Independence, James Lick, Mt. Pleasant, Oak Grove, Piedmont Hills, Santa Teresa, Silver Creek, Yerba Buena and W.C. Overfelt High Schools be adopted at \$49 per parcel, raising \$6.4 million annually for five years, with senior exemptions and full public disclosure of all spending?"

PURPOSES

To provide local revenue that cannot be taken by the State and spent elsewhere, and to maintain high-quality public education in schools in the East Side Union High School District (the "District"), the District proposes to levy and collect an education parcel tax annually for five years as more fully described below under "EDUCATION PARCEL TAX AND PROCEDURES," and to implement accountability measures in connection with the education parcel tax and to provide oversight and accountability to ensure that funds are used only for the following specific purposes:

- Maintain and protect vital educational programs and classes, including expanding classes for college readiness, vocational and career training programs;
- Attract and retain qualified, high-performing teachers, staff and counselors;
- Support competitive wages, benefits and expand access to resources for teachers and staff.

The Board of Trustees will not fund any program other than those listed above from the proceeds of the education parcel tax. Under no circumstances shall any of the proceeds of the education parcel tax be used for administrators' salaries, benefits or pensions.

EDUCATION PARCEL TAX AND PROCEDURES

Amount of Education Parcel Tax. Subject to two-thirds approval of the voters, the education parcel tax of \$49 per parcel (except exempt parcels, as described below) shall become effective for five years commencing with fiscal year 2025-26 and be collected by the Santa Clara County Tax Collector at the same time as and along with, and shall be subject to the same penalties as general *ad valorem* taxes collected by said tax collector.

The Board of Trustees will not use the proceeds of the parcel tax to fund any programs other than those listed above and will establish an independent citizen oversight committee to ensure that funds are used for such purposes.

Definition of Parcel. A parcel shall be defined as any unit of land in the District that receives a separate tax bill from the Santa Clara County Tax Collector.

Exemptions. The following exemptions shall apply to the levy of the qualified special tax.

COMPLETE TEXT OF MEASURE N-Continued

- *Otherwise Exempt Property.* All property that would otherwise be exempt from property taxes shall also be exempt from the education parcel tax.
- *Senior Citizen Exemption.* An exemption shall be available to persons who are 65 years or older and own and occupy as a principal residence a parcel subject to the education parcel tax.

Property owners seeking the senior citizen exemption must apply to the District for such exemption under procedures established by the District or otherwise as required by law or by the Santa Clara County Tax Collector.

Exclusive Procedures. The procedures described herein with respect to the levy and collection of the education parcel tax and exemptions, and any additional procedures established by the Board of Trustees of the District, shall be the exclusive claims procedure for claimants seeking an exemption, refund, reduction, or re-computation of the qualified special tax. Whether any particular claim is to be resolved by the District or by the County shall be determined by the District, in coordination with the County as necessary. The District's Board of Trustees may adopt such additional or supplemental procedures as it deems necessary or convenient for the administration of the education parcel tax.

ACCOUNTABILITY MEASURES

Government Code Accountability. In accordance with the requirements of California Government Code sections 50075.1 and 50075.3, the following accountability measures, among others, shall apply to the qualified special taxes levied in accordance with this Measure:

- the specific purposes of the education parcel tax shall be those purposes identified above under the heading "PURPOSES,"
- the proceeds of the education parcel tax shall be applied only to those specific purposes identified above under the heading "PURPOSES,"
- a separate, special account shall be created into which the proceeds of the education parcel tax must be deposited; and
- the chief fiscal officer of the District shall file an annual written report with the Board of Trustees of the District showing (1) the amount of funds collected and expended from the proceeds of the education parcel tax and (2) the status of any projects, programs or purposes identified above under the heading "PURPOSES."

Citizens' Oversight Committee. In addition to the accountability measures required by the Government Code, an independent Citizens' Oversight Committee shall be appointed by the Board of Trustees to advise the Board on the expenditures funded by the measure in order to ensure that said funds are spent for the purposes approved by the voters. The Citizens' Oversight Committee will monitor the expenditures of these funds by the District and will report on an annual basis to the Board and community on how these funds have been spent.

Annual Report. The District will prepare a report with the Board each year containing (a) the amount of education parcel tax funds collected

COMPLETE TEXT OF MEASURE N-Continued

and expended and (b) the status of any projects, programs and purposes required or authorized to be funded from the proceeds of the education parcel tax as identified in the measure.

PROTECTION OF FUNDING

Current law forbids any decrease in State or Federal funding to the District because of the District's adoption of an education parcel tax. However, if any such funds are reduced because of the adoption of this education parcel tax, then the amount of the education parcel tax will be reduced annually as necessary in order to restore such State or Federal funding.

SEVERABILITY

The Board of Trustees of the District hereby declares, and the voters by approving this measure concur, that every section, paragraph, sentence and clause of this measure has independent value, and the Board of Trustees and the voters would have adopted each provision hereof regardless of every other provision hereof. Upon approval of this measure by the voters, should any part be found by a court of competent jurisdiction to be invalid for any reason, all remaining parts hereof shall remain in full force and effect to the fullest extent allowed by law.

ARGUMENT IN FAVOR OF MEASURE N

Vote Yes on East Side Union High School District's Measure N!

Our local public high schools—Andrew Hill, Calero, Evergreen Valley, Foothill, Independence, James Lick, Mt. Pleasant, Oak Grove, Piedmont Hills, Santa Teresa, Silver Creek, Yerba Buena, and W.C. Overfelt High—are our community's most valuable assets. They provide opportunities for all students, teach critical skills and prepare students for success in college and future careers.

A **YES** vote on Measure N will protect essential career training programs, support advanced courses and college preparation programs and ensure competitive wages and benefits for our dedicated teachers, counselors and staff.

Measure N projects include:

- **Attracting New Educators:** Offer competitive wages and benefits to attract highly qualified teachers, counselors and staff.
- **Empowering Students for Success:** Safeguard and maintain access to essential College Preparation and Career Technical Education programs.
- **Retaining Top-Tier Teachers and Staff:** Maintain competitive wages and benefits to retain highly qualified teachers, counselors and staff.

Measure N offers significant protections and benefits for our community:

- **Guaranteed Local Investment:** Measure N funds **cannot** be taken by the state and spent elsewhere.
- **Transparency and Accountability:** Public disclosure of spending, independent citizen oversight and audits ensure responsible use of funds.
- **Growth and Vitality of Our Community:** High-quality schools increase the value of our homes and businesses.
- **Focused Spending:** No funds for administrators' salaries, pensions or benefits.
- **Senior Citizen Exemption:** Homeowners age 65+ can apply for a Senior Citizen exemption.

Your **YES** vote will ensure that the East Side Union High School District can attract and retain top-tier teachers and staff, support student growth and success and protect the value of our homes and businesses. Together, we can build a brighter future!

ARGUMENT IN FAVOR OF MEASURE N-Continued

Join parents, grandparents, guardians, teachers, neighbors, business owners and community leaders in voting **YES on Measure N**.

Blanca Alvarado
Former Santa Clara County Board Supervisor

Jon D. Reinke
ESUHSD Parent, Taxpayer, Homeowner

Binh Khac Nguyen
Retired General

Victor G. Garza
ESUHSD Parent & Community Advocate

Joe Dam
Tax Preparer & ESUHSD Parent

REBUTTAL TO ARGUMENT IN FAVOR OF MEASURE N

Government debt is crushing our economy. The *federal debt*, alone, now totals more than 100% of GDP!

On top of that, the state, cities, and school districts are burdening us with endless taxes—sales! hotel! property transfer! and business license taxes!—that we taxpayers (and consumers) must shoulder!

East Side Union High School District failed in the last \$49 parcel tax ballot measure, and now they are using district funds to try again.

Have they *earned* this tax increase, through having improved students' test scores?

Let's look at 2022-23 test results, showing a **decline** in students' performance in *the* two fundamental subjects:

<u>Students not meeting standards:</u>	English literacy:	38.16%
	Math literacy:	64.37%

ESUHSD, which spends \$20,413 per student, per year, "thanked" parents and taxpayers by **increasing the percentage** of students who **failed to meet English and math standards!**

Source: Education Data Partnership (Ed-Eata.org)

ESUHSD is spending \$20,413 per student per year (ADA) with a student:teacher ratio of 22 to 1. **That's \$449,086 per classroom per year!** Yet, they want **even more of our hard-earned money** to pad their salaries and fat pension plans.

ESUHSD punished parents and taxpayers who saw a drop in test scores, by increasing the average teacher's salary from \$94,375 for 2018-19 to \$110,039 for 2022-23.

Tell the trustees to be financially responsible: **vote NO on Measure N.**

If you reward failure, you will get more failure!

Just say NO to Measure N.

For more information, please visit us at:

SVTaxpayers.org
SCCLP.org

Mark W.A. Hinkle
President: Silicon Valley Taxpayers Association

Elizabeth C. Brierly
District Resident

Joe Dehn
Chair, Libertarian Party of Santa Clara County

Steven Wells

ARGUMENT AGAINST MEASURE N

East Side Union High School District claims they need this supposedly temporary tax increase of \$245 in order "to protect career technical and college preparation...."

The district failed to get voter approval of the last \$49/year parcel tax ballot measure, and now they are using district funds to try again.

Have they earned this tax increase, by improving students' test scores?

Let's look at the student performance; it has **declined** in the two key subjects:

- 2022-23 **students not meeting** English literacy standards: 38.16%
- 2022-23 **students not meeting** math literacy standards: 64.37%

ESUHSD, which spends \$20,413 per student, per year, "rewarded" parents and taxpayers by **increasing the percentage** of students who **failed to meet English and math standards!**

Source: California Department of Education Data Partnership (Ed-Data.org)

Should you, the voter, reward the district for dropping scores in the two key subjects?

If you answered "no," we encourage you to vote **NO on Measure N**.

ESUHSD is spending \$20,413 per student per year (ADA), with 22 students per teacher. That's a **whopping \$449,086 per classroom per year!** Yet, they want **even more** of your hard-earned money to pad their salaries and fat pension plans.

ESUHSD punished taxpayers with the drop in test scores, and then increased the average teacher's salary from \$94,375 (2018-19) to \$110,039 (2022-23).

Please tell the school board to be financially and academically responsible, by casting your vote as **NO on Measure N**.

If you reward failure, you will get more failure!

Just say NO to Measure N.

You can be FOR children, FOR teachers, and FOR education—while rejecting repeat tax hikes that fail to deliver the promised results.

For more information, please visit us at SVTaxpayers.org.

Mark W.A. Hinkle
President: Silicon Valley Taxpayers Association

Elizabeth C. Brierly
District Resident

Joe Dehn
Chair, Libertarian Party of Santa Clara County

Steven Wells

REBUTTAL TO ARGUMENT AGAINST MEASURE N

Each of us, except for the authors of the opposing argument, understands that investing in our public schools is essential to providing high-quality education that prepares our children for college and future success. Our schools enrich our community and protect the value of our homes and local businesses.

Let's prioritize our children's future and vote YES on Measure N.

Measure N will:

- Protect access to College Preparation and Career Readiness programs, preparing students for success with advanced courses
- Increase student access to Career Technical Education programs and classes
- Enhance our district's ability to attract and retain highly qualified teachers and staff by offering competitive wages and benefits

Most importantly, Measure N provides solid taxpayer protections. State law guarantees that Measure N funds **cannot be taken by the state and spent elsewhere**. Public disclosure of spending is required, and Senior Citizens exemptions for homeowners 65 and older.

Measure N is an opportunity to make a lasting investment in our schools and community. This measure allows us to enhance and protect the quality of our children's education, all while preserving the value of our homes and local businesses. Together, let's build a brighter future for our children and our community by voting **YES on Measure N!**

Vikas Navani
Former Citizens Bond Oversight Committee Member

Thelma Boac
Board Member, Berryessa Union SD

Binh Khac Nguyen
Retired General

Cipriana Morin
Community Advocate

Hung Nguyen
Parent

ORCHARD SCHOOL DISTRICT MEASURE GG

To provide a safe, modern neighborhood school; fix deteriorating roofs, plumbing, electrical, heating and cooling systems; upgrade classrooms; improve student safety and security systems; repair, construct, acquire classrooms, equipment, sites and facilities; shall Orchard School District's measure be adopted authorizing \$30,000,000 in bonds at legal rates, levying \$12 per \$100,000 assessed value (\$2,800,000 annually) while bonds are outstanding, with independent audits, citizen oversight, public disclosure of all spending and all money locally controlled?

Bonds—Yes
Bonds—No

COUNTY COUNSEL'S IMPARTIAL ANALYSIS OF MEASURE GG

California law permits school districts to issue bonds with the approval of 55% of district voters. Such bonds may be used only for construction, reconstruction, rehabilitation, or replacement of school facilities, including furnishing and equipping those facilities, or the acquisition or lease of real property for school facilities.

The Board of Trustees (Board) of the Orchard School District (District) has placed on the ballot a Measure authorizing the issuance and sale of up to \$30,000,000 in such bonds for the purposes of constructing, renovating, and updating school facilities.

As identified in the Measure, the types of projects may include but are not limited to:

- Upgrading facilities to meet current health and building safety codes and provide access for students with disabilities;
- Repairing or replacing deteriorating roofs, and plumbing, heating, ventilation, and electrical systems;
- Improving student safety and campus security systems, including fencing, outside lighting, emergency communications systems, smoke detectors, fire alarms, and sprinklers;
- Improving heating, ventilation, air conditioning, insulation, doors, windows, and energy efficient infrastructure;
- Keeping computer systems and instructional technology up-to-date;
- Creating multi-use classrooms to support hands-on instruction and learning-by-doing;
- Ensuring that pre-kindergarten playground equipment and play areas meet current health and safety standards;
- Providing classrooms, materials, equipment, and facilities necessary for math, science, engineering, music, and visual and performing arts instruction.

Project costs may include architectural, engineering, and similar planning costs, as well as staff training expenses. As state law requires, the Measure prohibits bond proceeds from being used for teacher or administrator salaries or other school operating expenses.

These general obligation bonds will be payable from ad valorem taxes levied on taxable real property within the District. The Measure states that the best estimate of the average annual tax rate to be levied to repay the proposed bonds is \$12 per \$100,000 of assessed value, that the tax will be collected beginning in fiscal year 2026-2027, and that the final fiscal year in which the tax is anticipated to be collected will be 2044-2045. The

COUNTY COUNSEL'S IMPARTIAL ANALYSIS OF MEASURE GG-Continued

Measure states that the best estimate of the total debt service during the life of the bond, including principal and interest, is \$53,300,000.

State law requires the District to take certain steps to account for the bond proceeds. Accordingly, the District has listed in the Measure the specific projects to be funded, including a certification that, in developing the list, the Board evaluated safety, class size reduction, and information technology needs. Additionally, the District will direct the proceeds be deposited into a special account, appoint an independent citizens' oversight committee, conduct annual independent performance and financial audits, and prepare annual reports on funds collected and expended and the status of any funded project.

A "yes" vote is a vote to authorize the issuance and sale of up to \$30,000,000 of general obligation bonds to fund school facilities projects as described in the Measure.

A "no" vote is a vote not to authorize the issuance and sale of the bonds.

Tony LoPresti
County Counsel

By: Jamila Benkato
Deputy County Counsel

COMPLETE TEXT OF MEASURE GG

FULL TEXT BALLOT PROPOSITION OF THE ORCHARD SCHOOL DISTRICT BOND MEASURE ELECTION NOVEMBER 5, 2024

The following is the full proposition of the **Orchard School Safety and Improvement Bond of 2024** presented to the voters by the Orchard School District.

"To provide a safe, modern neighborhood school; fix deteriorating roofs, plumbing, electrical, heating and cooling systems; upgrade classrooms and science labs; improve student safety and security systems; repair, construct, acquire classrooms, equipment, sites and facilities; shall Orchard School District's measure be adopted authorizing \$30,000,000 in bonds at legal rates, levying \$12 per \$100,000 assessed value (\$2,800,000 annually) while bonds are outstanding, with independent audits, citizen oversight, public disclosure of all spending and all money locally controlled?"

PROJECT LIST

The Board of Trustees of the Orchard School District is committed to **improving the quality of education** in local schools by providing safe, secure, upgraded classrooms, and technology needed to support high quality instruction. To that end, the Board evaluated the District's urgent and critical facility needs, including **safety and security** issues, class size reduction, **basic repairs**, computer and information technology in developing the types of projects to be funded by this measure as described below. The District conducted a facilities evaluation and received public input in developing this Project List. The Board have prioritized the key health and safety needs so that the most critical facility needs are addressed.

In approving this Project List, the Board of Trustees determines that the District **must**:

- **PROVIDE** classrooms, facilities and technology needed to support high quality instruction.
- **REPAIR** older classrooms and school facilities including leaky roofs, plumbing, heating, ventilation, and electrical systems.
- **UPGRADE** older schools so they meet current health codes, building safety codes, provide proper access for students with disabilities.
- **IMPROVE** student safety and campus security including fencing, intruder protection systems, emergency communications systems, smoke detectors, fire alarms, and sprinkler systems.
- **KEEP** computer systems and instructional technology up-to-date. including through the acquisition of current equipment and materials to instruct students in science, technology, and engineering disciplines.
- **REQUIRE A TRANSPARENT SYSTEM OF ACCOUNTABILITY, INCLUDING A PROJECT LIST DETAILING HOW MONEY WILL BE USED, A CITIZENS'OVERSIGHT COMMITTEE AND PUBLIC DISCLOSURE OF HOW ALL FUNDS ARE SPENT.**

COMPLETE TEXT OF MEASURE GG-Continued

The Project List includes the following types of upgrades and improvements at District facilities:

STUDENT SAFETY AND ACHIEVEMENT: SUPPORTING HIGH QUALITY INSTRUCTION

Repair and Upgrade Projects That Improve Student Safety and Success

Goals and Purposes: Our school needs to be modernized. It is time to make essential infrastructure repairs and improvements so that the District's school can serve the community well for decades to come. Repairing leaking and deteriorating roofs, and upgrading heating, ventilation gas and electrical systems are priorities.

Student safety, security has become top priority for schools around nation. This measure will provide funding for increased safety and essential security systems that will protect students and staff in case of an emergency

- Upgrade facilities so they meet current health codes, building safety codes, and provide proper access for students with disabilities.
- **Repair or replace deteriorating roofs, plumbing, heating, ventilation, electrical systems.**
- Improve student safety and campus security systems, including fencing, outside lighting, emergency communications systems, smoke detectors, fire alarms and sprinklers.
- Improve heating, ventilation, air conditioning, insulation, doors, windows, infrastructure to increase energy efficiency, reduce utility bills and have more money to spend in the classroom.
- Keep computer systems and instructional technology up-to-date.
- Create modern, multi-use classrooms to support hands-on instruction and learning-by-doing.
- Ensure that pre-K children's playground equipment and play areas meet current health and safety standards.
- Provide the classrooms, materials, equipment and facilities needed to support high quality instruction not only in math, science, and engineering, but also music, visual and performing arts.

In addition to the projects listed above, the repair and renovation of existing school facilities may include, but not be limited to, some or all of the following: add or renovate student and staff restrooms; repair and replace electrical, plumbing, heating, ventilation and air conditioning systems; upgrade of facilities for energy efficiencies; repair and replace worn-out and deteriorated roofs, windows, walls, floors, doors and drinking fountains; construct or renovate multi-purpose learning spaces; install wiring and electrical systems to safely accommodate computers, technology and other electrical devices; upgrade or construct support facilities including music, art facilities, classrooms, covered eating areas; repair and replace fire alarms, emergency communications, fencing and security systems; improve facilities to satisfy ADA requirements;

COMPLETE TEXT OF MEASURE GG-Continued

resurface or replace asphalt, broken concrete and improve hard courts, turf and irrigation/drainage systems and campus landscaping (but excluding therefrom the improvement of any track and athletic fields constructed with funds from the District's 2000 or 2001 Bonds, or both); install signage and marquees; expand parking lots and improve pick-up and drop-off areas; improve all site utilities; construct new school buildings; upgrade or replace interior and exterior painting, floor covering (including carpets), and school facades; demolition; upgrade kitchens, food service, and school cafeterias; construct various forms of storage and support spaces and classrooms; improve outdoor learning environments and quads; repair, upgrade and install interior and exterior lighting systems; improve playgrounds, play structures, and facilities to support student health, fitness and safety; replace outdated security fences and security systems (including access control systems), provide lunch shelters, shade structures, indoor space for assemblies or for rainy day lunch; upgrade music labs, multi-purpose rooms, and learning centers. In addition to the listed projects stated above, the Project List also includes the acquisition of a variety of instructional, maintenance and operational equipment, including the reduction or retirement of outstanding lease obligations and interim funding incurred to advance fund projects from the Project List; payment of the costs of preparation of all facility planning, facility studies, assessment reviews, facility master plan preparation and updates, environmental studies (including environmental investigation, remediation and monitoring), design and construction documentation, and temporary housing of dislocated District activities caused by construction projects.

The upgrading of technology infrastructure includes, but is not limited to, network rewiring, cabling, fiber infrastructure, computers, portable interface devices, servers, switches, routers, modules, sound projection systems, classroom tv/audio enhancements, laser printers, digital white boards, document projectors, upgrade voice-over-IP, clock/telephone/intercom systems, call manager and network security/firewall, wireless technology systems, refresh classroom technology, miscellaneous IT and instructional equipment, data storage, phones, identity cards and the construction and installation of a data center in the cloud for the District's enterprise systems, such as resource planning, websites, domain name systems, cloud applications and information security. The budget for each project is an estimate and may be affected by factors beyond the District's control.

The final cost of each project will be determined as plans and construction documents are finalized, construction bids are received, construction contracts are awarded and projects are completed. Based on the final costs of each project, certain of the projects described above may be delayed or may not be completed. Demolition of portable classrooms and existing facilities and reconstruction of facilities scheduled for repair and upgrade may occur, if the Board determines that such an approach would be more cost-effective in creating more enhanced and operationally efficient campuses. Necessary site preparation/restoration may occur in connection with new construction, renovation or remodeling, or installation or removal of relocatable classrooms, including ingress and egress, removing, replacing, or installing irrigation or drainage systems, utility lines, trees and landscaping, relocating fire access roads, and acquiring any necessary easements, licenses, or rights of way to the property. The listed projects will be completed as needed. Each project is assumed to include its share of furniture, equipment, architectural, engineering, and similar planning costs, program/project management, staff training expenses and a customary contingency for unforeseen design and construction costs. Proceeds of the bonds may be used to pay or reimburse the District for

COMPLETE TEXT OF MEASURE GG-Continued

the cost of District staff when performing work on or necessary and incidental to bond projects. Bond proceeds shall only be expended for the types of projects and purposes identified herein. The District shall create an account into which proceeds of the bonds shall be deposited and comply with the reporting requirements of Government Code § 53410.

FISCAL ACCOUNTABILITY: THIS MEASURE REQUIRES A CLEAR SYSTEM OF ACCOUNTABILITY, INCLUDING A PROJECT LIST DETAILING HOW THE MONEY WILL BE USED, A CITIZEN'S OVERSIGHT COMMITTEE, INDEPENDENT AUDITS TO ENSURE MONEY IS SPENT PROPERLY AND PUBLIC DISCLOSURE OF HOW ALL FUNDS ARE SPENT.

IN ACCORDANCE WITH EDUCATION CODE SECTION 15272, THE BOARD OF TRUSTEES WILL APPOINT A CITIZENS' OVERSIGHT COMMITTEE AND CONDUCT ANNUAL INDEPENDENT AUDITS TO ASSURE THAT FUNDS ARE SPENT ONLY ON DISTRICT PROJECTS AND FOR NO OTHER PURPOSE. THE EXPENDITURE OF BOND MONEY ON THESE PROJECTS IS SUBJECT TO STRINGENT FINANCIAL ACCOUNTABILITY REQUIREMENTS. BY LAW, PERFORMANCE AND FINANCIAL AUDITS WILL BE PERFORMED ANNUALLY, AND ALL BOND EXPENDITURES WILL BE MONITORED BY AN INDEPENDENT CITIZENS' OVERSIGHT COMMITTEE TO ENSURE THAT FUNDS ARE SPENT AS PROMISED AND SPECIFIED. THE CITIZENS' OVERSIGHT COMMITTEE MUST INCLUDE, AMONG OTHERS, REPRESENTATION OF A BONA FIDE TAXPAYERS ASSOCIATION, A BUSINESS ORGANIZATION AND A SENIOR CITIZENS ORGANIZATION. NO DISTRICT EMPLOYEES OR VENDORS ARE ALLOWED TO SERVE ON THE CITIZENS' OVERSIGHT COMMITTEE.

NO ADMINISTRATOR SALARIES: PROCEEDS FROM THE SALE OF THE BONDS AUTHORIZED BY THIS PROPOSITION SHALL BE USED ONLY FOR THE ACQUISITION, CONSTRUCTION, RECONSTRUCTION, REHABILITATION, OR REPLACEMENT OF SCHOOL FACILITIES, INCLUDING THE FURNISHING AND EQUIPPING OF SCHOOL FACILITIES, AND NOT FOR ANY OTHER PURPOSE, INCLUDING TEACHER AND SCHOOL ADMINISTRATOR SALARIES AND OTHER OPERATING EXPENSES.

TAX RATE STATEMENT

An election will be held in the Orchard School District (the "District") on November 5, 2024 to authorize the sale of up to \$30,000,000 in general obligation bonds. If such bonds are authorized and sold, principal and interest on the bonds will be payable only from the proceeds of *ad valorem* tax levies made upon the taxable property in the District. The following information is submitted in compliance with Sections 9400-9406 of the Elections Code of the State of California. Such information is based upon the best estimates and projections presently available from official sources, upon experience within the District, and other demonstrable factors.

The following information is provided pursuant to Elections Code Section 9401:

1. The best estimate of the average annual tax rate that would be required to be levied to fund this bond issue over the entire duration of the bond debt service, based on estimated assessed valuations available at the time of filing of this statement, is \$12.00 per \$100,000 of assessed valuation. It is currently expected that the tax will be collected starting in fiscal year 2026-27, after the Measure D (\$28.30 per \$100,000 in 2024-25) tax expires, and until fiscal year 2044-45.
2. The best estimate of the highest tax rate that would be required to be levied to fund this bond issue, for each year that bonds are outstanding, based on estimated assessed valuations available at the time of filing this statement, is \$12.00 per \$100,000 of assessed valuation, which is projected to be the same in every fiscal year the bonds remain outstanding.
3. The best estimate of total debt service, including principal and interest, that would be required to be repaid if all the bonds are issued and sold will be approximately \$53.3 million.

Voters should note that these estimates are based on projections derived from information obtained from official sources, and are based on the assessed value (not market value) of taxable property on the County's official tax rolls. Property owners should consult their own property tax bills and tax advisors to determine their property's assessed value and any applicable tax exemptions.

The attention of all voters is directed to the fact that the foregoing information is based upon projections and estimates only, which amounts are not maximum amounts and durations and are not binding upon the District. The actual debt service, tax rates and the years in which they will apply may vary depending on the timing of bond sales, the par amount of bonds sold at each sale and actual increases in assessed valuations. The timing of the bond sales and the amount of bonds sold at any given time will be determined by the District based on the need for project funds and other considerations. Actual assessed valuations will depend upon the amount and value of taxable property within the District as determined by the County Assessor in the annual assessment and the equalization process.

Jeff Bowman
Superintendent, Orchard School District

ARGUMENT IN FAVOR OF MEASURE GG

A Yes vote on Measure GG will upgrade, modernize, and improve classrooms and infrastructure at Orchard School. Measure GG will provide funds to repair or replace leaky roofs and windows, replace outdated and inefficient heating, cooling, electrical and plumbing systems, and provide up to date classroom learning technology.

Measure GG will also improve school safety and security with updated door locks, covered walkways, fencing, and security measures to ensure that Orchard School remains a safe and secure environment for our students to learn and grow.

Measure GG will:

- Repair or replace leaky roofs, plumbing, electrical, heating and cooling systems.
- Upgrade classrooms and improve access to instructional technology.
- Replace old portables with new classrooms.
- Improve accessibility for students with disabilities.
- Update and improve student safety and campus security.

Measure GG will include citizen oversight, annual audits, and an annual public report to ensure the money is used efficiently and effectively, and no funds will be used for administrator salaries.

Measure GG will not increase the amount property owners currently pay. The district's 2000 bond (\$28.30 per \$100,000 Assessed Value) expires in 2026. Measure GG, if approved by voters will only cost \$12 per \$100,000, a saving for taxpayers and a benefit for local students.

Our community has been supportive of bonds in the past and the schools and students have benefitted from our investment. We need to continue our investment in the modernization of Orchard School and make sure we serve all students with safe and modern classrooms.

Great schools are part of what makes our area a great place to live. Whether or not you have school-aged children, supporting local schools is a wise investment in keeping our property values strong.

Please join us and vote Yes on Measure GG

Erin McCarthy
President Orchard Teachers Association

Lithey Lynn D. Limqueco
Ex-Board Member/Parent

Mitch Del Rosario
Business Owner & Founder Kollab Real Estate

REBUTTAL TO ARGUMENT IN FAVOR OF MEASURE GG

Government debt is crushing us. The *federal debt alone* exceeds our GDP!

Moreover, the state, cities, and school districts are saddling us with **bond debt, owed by us taxpayers, and our children!**

Endless rounds of bond sales will not help Orchard School District improve education, raise scores, or reverse falling enrollment.

Private alternatives can do **a better job for our children, at lower average costs.** Parents could conceivably afford them—if they weren't also repaying bond debts!

If schools were private, the funding sources to maintain them would be, too.

Schools might borrow from lenders **who decide if their plan makes sense.** Nonprofit schools would seek **voluntary contributions**—like any other charity—so that capable, if poor, children could secure a good education. And home schoolers don't need to build facilities!

These **alternatives don't involve government bond sales—or the hefty taxation needed to repay the bonds' Wall Street investors.**

Instead of viewing increasingly popular alternatives as threats, Orchard School District trustees should utilize them!

Rather than BORROW \$30 MILLION to "construct [and] acquire classrooms," trustees could encourage families to switch to alternative providers, so that existing facilities will suffice, in managing those students who remain in our public schools—and acknowledge declining enrollment and take advantage of it, to rent out their unneeded facilities.

Great teachers afraid of losing their jobs **can be confident that private schools will hire them.**

JUST SAY NO to endless bond debt and its resultant, crushing taxation!

Vote NO on Measure GG.

SVTaxpayers.org
SCCLP.org

Mark W.A. Hinkle
President: Silicon Valley Taxpayers Association

Joe Dehn
Chair, Libertarian Party of Santa Clara County

ARGUMENT AGAINST MEASURE GG

Orchard School District \$30,000,000 Bond Tax: Argument Against Measure GG

Proponents say they want to "construct, acquire classrooms," yet there's been a steady decline in enrollment.

Fact: Current ADA enrollment is down to 720, following a steady DECLINE since the 2018-19 school year.

So does constructing more classrooms make any sense to you? NO?

Then please vote NO on Measure GG.

This bond costs \$41,666 per child—and that's before the 30+ years of interest expenses at rates of up to 12%. Yikes!

Will this \$30 million bond debt be spent to hire or train great teachers, to reverse the schools' dismal academic achievement?

Answer: **NO**, that's not legally permitted.

Let's look at the latest lower academic performance figures:

- 2022-23 results: **53.35% of children below grade level for English.**
- 2022-23 results: **70.87% of children below grade level for math.**

Orchard School District rewarded teachers for this performance decline by increasing the average salary of \$86,217 in 2018-19 to \$101,814 plus benefits up to \$14,500 yearly in 2022-23.

Source: California Department of Education Data Partnership (Ed-Data.org)

Should you, the voter, reward the district for dropping scores in English and math?

If you answered "no," we encourage you to vote **NO on Measure GG.**

If you reward failure, you will get more failure!

Reject failure—Vote No on GG.

You can be FOR children, FOR teachers, and FOR education—but AGAINST Measure GG.

For more information, please visit us at SVTaxpayers.org.

Mark W.A. Hinkle
President: Silicon Valley Taxpayers Association

Joe Dehn
Chair, Libertarian Party of Santa Clara County

REBUTTAL TO ARGUMENT AGAINST MEASURE GG

The opponents of Measure GG do not live in the District. They do not vote in the District. It's possible they have never set foot on the Orchard School campus. Yet, they label Orchard School a failure.

A Yes vote on Measure GG will upgrade, modernize, and improve classrooms and infrastructure at Orchard School. Measure GG provides a guaranteed and necessary source of local funding to upgrade and modernize classrooms, fix leaky roofs, update campus safety and security, improve heating, cooling and ventilation systems, replace fire alarms and build new classrooms for incoming transitional kindergarten students.

Orchard School District voters have previously approved bond authorizations in 2000 and 2001. The purpose of the bonds was to meet critical renovation, modernization, and safety needs at Orchard School. Though bond funding has made a significant impact, Orchard School still has urgent needs that reach beyond the scope of the district's annual operating budget.

As one of the oldest teaching institutions in California, Orchard began as a school for settlers in 1862. With over a century and a half of academic history, we continue to educate today's young minds in becoming tomorrow's leaders. We hope to share our culture of excellence and commitment through our faculty, parents and staff. We hope you agree that Orchard continues to create an environment that nurtures personal and academic achievement one student at a time.

We hope you agree and vote Yes on GG.

Erin McCarthy
Orchard Teachers Association President

Lithey Lynn D. Limqueco
Former Member of the Board/Parent

Mitch Del Rosario
Founder/Business Owner of Kollab Real Estate



The County of Santa Clara Registrar of Voters has modernized voting and provides voters with greater flexibility and convenience.

Commencing with the March 3, 2020 Presidential Primary Election ALL Santa Clara County registered voters are mailed a Vote by Mail Ballot. Inactive voters will not be mailed a Vote by Mail Ballot unless they update their voter registration or contact the Registrar of Voters' Office.

THE CHOICE IS YOURS

Vote by Mail

Once completed, you may choose to return your ballot by using any of the following options:

- ✓ FREE Postage Paid Return Envelope
- ✓ ANY Official Ballot Drop Box location countywide - a list of locations is included in this guide
- ✓ ANY Santa Clara County Vote Center - a list of locations is included in this guide

Vote in Person at Vote Centers

Vote using your Vote by Mail Ballot or vote in person at any Vote Center location within the County of Santa Clara. Vote Centers are universal polling places and will be open several days. Vote Centers offer more services:

- ✓ Accessible voting
- ✓ Ballot marking devices
- ✓ Drop off your ballot
- ✓ Receive a replacement ballot
- ✓ Register to vote or update registration information through Election Day
- ✓ Language assistance
- ✓ Election materials

Voter's Choice Act Implementation

The Voter's Choice Act (VCA) is a law passed by the California State Legislature in 2016. The VCA was implemented successfully in five counties during the 2018 elections. A total of 29 counties in California are currently conducting elections under the VCA model.

For more information, please call toll free: (866) 430-VOTE (8683) or email: voterschoice@rov.sccgov.org

Ballot Drop Box Locations

24 Hour Official Ballot Drop Box – October 7 – November 5, 2024 until 8 p.m. Election Day

Registrar of Voters schedule to collect ballots from drop boxes:

October 7 – October 18, 2024: Monday, Wednesday, and Friday

October 21 – November 5, 2024: Daily

LOCATIONS ARE SUBJECT TO CHANGE

Please visit our website www.sccvote.org to confirm that you are using the most current list.

Location	Address	City
Registrar of Voters (Near the Flagpole)	1555 Berger Drive	San Jose, CA 95112
Alviso Branch Library (Outside Drop Box)	5050 North First Street	Alviso, CA 95002
Campbell City Hall (Outside Drop Box)	70 North First Street	Campbell, CA 95008
Campbell Express Library (Campbell Avenue Parking Lot)	1 West Campbell Avenue E46	Campbell, CA 95008
Westmont High School (Outside Drop Box)	4805 Westmont Avenue	Campbell, CA 95008
Cupertino City Hall (Outside Drop Box)	10300 Torre Avenue	Cupertino, CA 95014
Cupertino Library (Outside Drop Box)	10800 Torre Avenue	Cupertino, CA 95014
De Anza College (RSS Building @ Parking Lot A1)	21250 Stevens Creek Boulevard	Cupertino, CA 95014
Quinlan Community Center (Outside Drop Box)	10185 North Stelling Road	Cupertino, CA 95014
Gavilan College (@ Student Center)	5055 Santa Teresa Boulevard	Gilroy, CA 95020
Gilroy City Hall (Outside Drop Box)	7351 Rosanna Street	Gilroy, CA 95020
Gilroy Library (Outside Drop Box)	350 West Sixth Street	Gilroy, CA 95020
Valley Health Center Gilroy (Outside Drop Box)	7475 Camino Arroyo Drive	Gilroy, CA 95020
Rod Kelley Elementary School (Outside Drop Box)	8755 Kern Avenue	Gilroy, CA 95020
Foothill College (@ Lot 8 Student Drop Off)	12345 El Monte Road	Los Altos Hills, CA 94022
Los Altos Hills Town Hall (Outside Drop Box)	26379 Fremont Road	Los Altos Hills, CA 94022
Los Altos City Hall (Outside Drop Box)	1 North San Antonio Road	Los Altos, CA 94022
Los Altos Library (Outside Drop Box)	13 South San Antonio Road	Los Altos, CA 94022
Woodland Branch Library (Outside Drop Box)	1975 Grant Road	Los Altos, CA 94024
Los Gatos Public Library (Outside Drop Box)	100 Villa Avenue	Los Gatos, CA 95030
Los Gatos Town Hall (Outside Drop Box)	110 East Main Street	Los Gatos, CA 95030
Milpitas City Hall (Outside Drop Box)	455 East Calaveras Boulevard	Milpitas, CA 95035
Milpitas Library (Outside Drop Box)	160 North Main Street	Milpitas, CA 95035
Milpitas Unified School District	1331 East Calaveras Boulevard	Milpitas, CA 95035
Monte Sereno City Hall (Outside Drop Box)	18041 Saratoga-Los Gatos Road	Monte Sereno, CA 95030
Morgan Hill City Hall (Outside Drop Box)	17575 Peak Avenue	Morgan Hill, CA 95037
Morgan Hill Library (Outside Drop Box)	660 West Main Avenue	Morgan Hill, CA 95037
Morgan Hill Unified School District (Outside Drop Box)	15600 Concord Circle	Morgan Hill, CA 95037
Nordstrom Elementary School (Outside Drop Box)	1425 East Dunne Avenue	Morgan Hill, CA 95037
VTa Park and Ride - Morgan Hill (Outside Drop Box)	17300 Depot Street	Morgan Hill, CA 95037
Mountain View City Hall (Outside Drop Box)	500 Castro Street	Mountain View, CA 94041
Mountain View Public Library (Outside Drop Box)	585 Franklin Street	Mountain View, CA 94041
Computer History Museum (Outside Drop Box)	1401 North Shoreline Boulevard	Mountain View, CA 94043

All Ballot Drop Box Locations are accessible.



Ballot Drop Box Locations

Location	Address	City
Mountain View Public Works (Sand Bag Entrance - Outside Drop Box)	234 North Whisman Road	Mountain View, CA 94043
Palo Alto City Hall (Outside Drop Box)	250 Hamilton Avenue	Palo Alto, CA 94301
Palo Alto High School (Outside Drop Box)	50 Embarcadero Road	Palo Alto, CA 94301
Mitchell Park Library (Outside Drop Box)	3700 Middlefield Road	Palo Alto, CA 94303
Rinconada Branch Library (Outside Drop Box)	1213 Newell Road	Palo Alto, CA 94303
Biblioteca Latinoamericana Branch Library (Outside Drop Box)	921 South First Street	San Jose, CA 95110
Santa Clara County Civic Center – West Wing (Outside Drop Box)	70 West Hedding Street	San Jose, CA 95110
CalTrain San Jose Diridon Station (Outside Drop Box)	65 Cahill Street	San Jose, CA 95110
Captain Jason M. Dahl Elementary School (Outside Drop Box)	3200 Water Street	San Jose, CA 95111
Edenvale Branch Library (Outside Drop Box)	101 East Branham Lane	San Jose, CA 95111
Edenvale Community Center (Outside Drop Box)	330 East Branham Lane	San Jose, CA 95111
Seven Trees Branch Library (Outside Drop Box)	3590 Cas Drive	San Jose, CA 95111
Tully Community Branch Library (Outside Drop Box)	880 Tully Road	San Jose, CA 95111
Franklin-McKinley School District (Outside Drop Box)	645 Wool Creek Drive	San Jose, CA 95112
Martin Luther King Jr. Library (Outside Drop Box)	150 East San Fernando Street	San Jose, CA 95112
San Jose State University (@ Dudley Hall)	1 Washington Square	San Jose, CA 95112
San Jose State University (The Villages)	1 Washington Square	San Jose, CA 95112
Joyce Ellington Branch Library (Outside Drop Box)	491 East Empire Street	San Jose, CA 95112
San Jose City Hall (@ E. Santa Clara St. & S. 4th St.)	200 East Santa Clara Street	San Jose, CA 95113
SAP Center at San Jose (West Santa Clara St and Barack Obama Blvd)	525 West Santa Clara Street	San Jose, CA 95113
SAP Center at San Jose (West St John and Montgomery)	525 West Santa Clara Street	San Jose, CA 95113
Mayfair Community Center (Outside Drop Box)	2039 Kammerer Avenue	San Jose, CA 95116
East San Jose Carnegie Library (Outside Drop Box)	1102 East Santa Clara Street	San Jose, CA 95116
West Valley Branch Library (Outside Drop Box)	1243 San Tomas Aquino Road	San Jose, CA 95117
Vineland Branch Library (Outside Drop Box)	1450 Blossom Hill Road	San Jose, CA 95118
San Andreas Regional Center (Outside Drop Box)	6203 San Ignacio Avenue	San Jose, CA 95119
VTa Park and Ride – Santa Teresa Station (Outside Drop Box)	Santa Teresa Avenue @ Miyuki Drive	San Jose, CA 95119
Almaden Branch Library (Outside Drop Box)	6445 Camden Avenue	San Jose, CA 95120
Almaden Neighborhood Church (Outside Drop Box)	19550 McKean Road	San Jose, CA 95120
Evergreen Branch Library (Outside Drop Box)	2635 Aborn Road	San Jose, CA 95121
Eastridge Mall (Entrance C) (Outside Drop Box)	2200 Eastridge Loop	San Jose, CA 95122
Hillview Branch Library (Outside Drop Box)	1600 Hopkins Drive	San Jose, CA 95122
South Valley YMCA (Outside Drop Box)	5632 Santa Teresa Boulevard	San Jose, CA 95123
Southside Community Center (Outside Drop Box)	5585 Cottle Road	San Jose, CA 95123
Cambrian School District (Outside Drop Box)	4115 Jacksol Drive	San Jose, CA 95124
Campbell Union High School District (Outside Drop Box)	3235 Union Avenue	San Jose, CA 95124

All Ballot Drop Box Locations are accessible.



Ballot Drop Box Locations

Location	Address	City
Union Elementary School District (Outside Drop Box)	5175 Union Avenue	San Jose, CA 95124
Hammer Montessori at Galarza Elementary School (Outside Drop Box)	1610 Bird Avenue	San Jose, CA 95125
Willow Glen Branch Library (Outside Drop Box)	1157 Minnesota Avenue	San Jose, CA 95125
Rose Garden Branch Library (Outside Drop Box)	1580 Naglee Avenue	San Jose, CA 95126
Alum Rock Union School District (Outside Drop Box)	2930 Gay Avenue	San Jose, CA 95127
Dr Roberto Cruz Library (Outside Drop Box)	3090 Alum Rock Avenue	San Jose, CA 95127
San Jose City College (@ Student Center)	2100 Moorpark Avenue	San Jose, CA 95128
Valley Medical Center Valley Specialty Center (Outside Drop Box)	751 South Bascom Avenue	San Jose, CA 95128
Forest Hill Elementary School (Outside Drop Box)	4450 McCoy Avenue	San Jose, CA 95130
Moreland School District (Outside Drop Box)	4711 Campbell Avenue	San Jose, CA 95130
Brooktree Elementary School (Outside Drop Box)	1781 Olivetree Drive	San Jose, CA 95131
Orchard School District (Outside Drop Box)	921 Fox Lane	San Jose, CA 95131
Berryessa Branch Library (Outside Drop Box)	3355 Noble Avenue	San Jose, CA 95132
VTa Park and Ride – Hostetter Station (Outside Drop Box)	North Capitol Avenue @ Camino Del Rey	San Jose, CA 95132
Educational Branch Library (Outside Drop Box)	1772 Educational Park Drive	San Jose, CA 95133
County of Santa Clara Records Office (Outside Drop Box)	110 W. Tasman Drive	San Jose, CA 95134
Evergreen Valley College (@ Staff Parking Lot 7)	3095 Yerba Buena Road	San Jose, CA 95135
Village Square Branch Library (Outside Drop Box)	4001 Evergreen Village Square	San Jose, CA 95135
Pearl Avenue Branch Library (Outside Drop Box)	4270 Pearl Avenue	San Jose, CA 95136
VTa Park and Ride – Capitol Expressway (Outside Drop Box)	West Capitol Expressway @ Highway 87	San Jose, CA 95136
Evergreen Valley High School (Outside Drop Box)	3300 Quimby Road	San Jose, CA 95148
Mount Pleasant School District (Outside Drop Box)	3434 Marten Avenue	San Jose, CA 95148
Santa Clara City Hall (Outside Drop Box)	1500 Warburton Avenue	Santa Clara, CA 95050
Mission Branch Library (Outside Drop Box)	1098 Lexington St	Santa Clara, CA 95050
Briarwood Elementary School (Outside Drop Box)	1930 Townsend Avenue	Santa Clara, CA 95051
Central Park Branch Library (Outside Drop Box)	2635 Homestead Road	Santa Clara, CA 95051
Kona Kai Swim Club (Outside Drop Box)	680 Hubbard Avenue	Santa Clara, CA 95051
Mission College (Student Drop Off)	3000 Mission College Boulevard	Santa Clara, CA 95054
Northside Branch Library (Outside Drop Box)	695 Moreland Way	Santa Clara, CA 95054
Saratoga City Hall (Outside Drop Box)	13777 Fruitvale Avenue	Saratoga, CA 95070
Saratoga Library (Outside Drop Box)	13650 Saratoga Avenue	Saratoga, CA 95070
West Valley College (@ Fox Center)	14000 Fruitvale Avenue	Saratoga, CA 95070
Stanford Hospital (Outside Drop Box)	300 Pasteur Drive	Stanford, CA 94305
Sunnyvale Community Services (Outside Drop Box)	1160 Kern Avenue	Sunnyvale, CA 94085
Sunnyvale Public Library (Outside Drop Box)	665 West Olive Avenue	Sunnyvale, CA 94086
Sunnyvale City Hall (Outside Drop Box)	456 West Olive Avenue	Sunnyvale, CA 94086
Valley Medical Center Sunnyvale (Outside Drop Box)	660 South Fair Oaks Avenue	Sunnyvale, CA 94086
Sunnyvale Community Center (Outside Drop Box)	550 East Remington Drive	Sunnyvale, CA 94087
Sunnyvale Presbyterian Church (Outside Drop Box)	728 West Fremont Avenue	Sunnyvale, CA 94087
Grocery Outlet Bargain Market (Outside Drop Box)	1180 North Fair Oaks Avenue	Sunnyvale, CA 94089

All Ballot Drop Box Locations are accessible.



Vote Centers



Vote by Mail ballots will be mailed starting October 7. Mail back your ballot using the free prepaid postage return envelope provided.



Vote centers offer in-person voting options for a full spectrum of services, including language and accessibility. Masks and gloves are available at the vote centers for voters, workers, and observers.

The safety of voters and staff is our top priority.



If you prefer to vote in person at a Vote Center, consider voting early to avoid the crowds on Election Day.

Early Voting at the Registrar of Voters' Office

1555 Berger Drive, Building 2, San Jose, CA 95112

Monday – Friday	October 7, 2024 – November 4, 2024	8:00 a.m. to 5:00 p.m.
Saturday – Sunday	October 26, 2024 – October 27, 2024 November 2, 2024 – November 3, 2024	9:00 a.m. to 5:00 p.m.
Election Day	November 5, 2024	7:00 a.m. to 8:00 p.m.

All Vote Center Locations are accessible.



LOCATIONS ARE SUBJECT TO CHANGE

Please visit www.sccvote.org for the most current list.

11-Day Vote Center Locations

Open October 26 - November 4, 2024 from 9 a.m. to 5 p.m.

November 5, 2024 Election Day from 7 a.m. to 8 p.m.

LOCATIONS ARE SUBJECT TO CHANGE

Please visit www.sccvote.org for the most current list.

Language assistance is provided at all Vote Centers in: Chinese, Spanish, Tagalog, and Vietnamese. Some locations will have additional language assistance in: Hindi, Japanese, Korean, Khmer, Gujarati, Nepali, Persian, Portuguese, Punjabi, Russian, Syriac, Tamil, and Telugu. Please visit www.sccvote.org for the specific languages available at each location.

Location	Address	City
South Valley Middle School - Practice Room J17	7881 Murray Ave	Gilroy, CA 95020
Town of Los Altos Hills - Council Chambers	26379 Fremont Rd	Los Altos Hills, CA 94022
Antiochian Orthodox Church of the Redeemer	380 Magdalena Ave	Los Altos Hills, CA 94024
Morgan Hill Masonic Center - Hall	380 W Dunne Ave	Morgan Hill, CA 95037
Palo Alto Art Center - Auditorium	1313 Newell Rd	Palo Alto, CA 94303
Ventura Community Center - Activity Center	3990 Ventura Ct	Palo Alto, CA 94306
Elks Lodge #522 - Vestibule and Media Rooms	444 W Alma Ave	San Jose, CA 95110
Tully Branch Library - Community Room	880 Tully Rd	San Jose, CA 95111
Edenvale Branch Library - Community Room	101 Branham Ln E	San Jose, CA 95111
West Valley Branch Library - Community Room	1243 San Tomas Aquino Rd	San Jose, CA 95117
Santa Teresa Branch Library - Community Room	290 International Cir	San Jose, CA 95119
Almaden Community Center - Classroom 1	6445 Camden Ave	San Jose, CA 95120
Evergreen Branch Library - Community Room	2635 Aborn Rd	San Jose, CA 95121
Vietnamese American Cultural Center - Community Room	2072 Lucretia Ave	San Jose, CA 95122
Campbell Union High School District - Board Room	3235 Union Ave	San Jose, CA 95124
Cambrian Branch Library - Community Room	1780 Hillsdale Ave	San Jose, CA 95124
Christ the Good Shepherd Lutheran Church - Great Hall	1550 Meridian Ave	San Jose, CA 95125
Dr. Roberto Cruz Alum Rock Library - Community Room	3090 Alum Rock Ave	San Jose, CA 95127
Mt. Pleasant High School - Classrooms 805 & 808	1750 S White Rd	San Jose, CA 95127
Washington Park - Park Building	840 W Washington Ave	Sunnyvale, CA 94086
Braly Park	704 Daffodil Ct	Sunnyvale, CA 94086

Open October 26 - November 4, 2024 - from 10:00 a.m. to 6:00 p.m.

Election Day, November 5, 2024 - from 7:00 a.m. to 8:00 p.m.

Location	Address	City
Cupertino Library - Community, 201A & 201B Rooms	10800 Torre Ave	Cupertino, CA 95014
Milpitas Library - Auditorium	160 N Main St	Milpitas, CA 95035
Central Park Library - Redwood Room	2635 Homestead Rd	Santa Clara, CA 95051
Northside Branch Library - Community Room	695 Moreland Way	Santa Clara, CA 95054
Saratoga Library - Community Room	13650 Saratoga Ave	Saratoga, CA 95070

All Vote Center Locations are accessible.



4-Day Vote Center Locations

Open November 2 - November 4, 2024 from 9 a.m. to 5 p.m.

November 5, 2024 Election Day from 7 a.m. to 8 p.m.

LOCATIONS ARE SUBJECT TO CHANGE

Please visit www.sccvote.org for the most current list.

Language assistance is provided at all Vote Centers in: Chinese, Spanish, Tagalog, and Vietnamese. Some locations will have additional language assistance in: Hindi, Japanese, Korean, Khmer, Gujarati, Nepali, Persian, Portuguese, Punjabi, Russian, Syriac, Tamil, and Telugu. Please visit www.sccvote.org for the specific languages available at each location.

Location	Address	City
Campbell Community Center - Room Q80	1 W Campbell Ave	Campbell, CA 95008
Rancho Rinconada - Recreation Building	18000 Chelmsford Dr	Cupertino, CA 95014
Seven Springs Club House	21125 Seven Springs Pkwy	Cupertino, CA 95014
Garden Gate Elementary School - Library	10500 Ann Arbor Ave	Cupertino, CA 95014
Gilroy's First Baptist Church - Hall	8455 Wren Ave	Gilroy, CA 95020
Gilroy Center for the Arts	7341 Monterey Rd	Gilroy, CA 95020
Gilroy Police Department - Community Room	7301 Hanna St	Gilroy, CA 95020
Gilroy Veterans Memorial Building - Bingo Hall	74 W 6th St	Gilroy, CA 95020
The Terraces at Los Altos - Redwood Hall	373 Pine Ln	Los Altos, CA 94022
Los Altos Community Center - Grand Oak Room	97 Hillview Ave	Los Altos, CA 94022
Immanuel Lutheran Church - Fellowship Hall	1715 Grant Rd	Los Altos, CA 94024
Belwood Cabana Club - Cabana	100 Belwood Gateway	Los Gatos, CA 95032
Los Gatos Lodge - El Gato Room	50 Los Gatos-Saratoga Rd	Los Gatos, CA 95032
Lakeside Elementary School - Conference Room	19621 Black Rd	Los Gatos, CA 95033
Pioneer Mobile Home Park - Clubhouse	60 Wilson Way	Milpitas, CA 95035
SJECCD Milpitas Extension - HUB	1450 Escuela Pkwy	Milpitas, CA 95035
Christ Community Church of Milpitas - Sequoia	1000 S Park Victoria Dr	Milpitas, CA 95035
Westmont of Morgan Hill - Theater	1160 Cochrane Rd	Morgan Hill, CA 95037
Mountain View Community Center - Redwood Hall	201 S Rengstorff Ave	Mountain View, CA 94040
St. Timothy's Episcopal Church - Edwards Hall	2094 Grant Rd	Mountain View, CA 94040
Mountain View Masonic Lodge - Auditorium	890 Church St	Mountain View, CA 94041
Church of Scientology Silicon Valley - The Chapel	1066 Linda Vista Ave	Mountain View, CA 94043
Mitchell Park Community Center - El Palo Alto Room	3700 Middlefield Rd	Palo Alto, CA 94303
Palo Alto Buddhist Temple - Issei Hall	2751 Louis Rd	Palo Alto, CA 94303
Palo Alto Elks Lodge - Ballroom	4249 El Camino Real	Palo Alto, CA 94306
Barron Park Elementary School - Music Room 19	800 Barron Ave	Palo Alto, CA 94306
Center for Employment Training - Banquet Room	701 Vine St	San Jose, CA 95110

All Vote Center Locations are accessible.



4-Day Vote Center Locations

Location	Address	City
Santa Clara County Fairgrounds - Heritage Hall	344 Tully Rd	San Jose, CA 95111
African American Community Service Agency - Multipurpose Room	304 N 6th St	San Jose, CA 95112
Franklin-McKinley School District - Boardroom	645 Wool Creek Dr	San Jose, CA 95112
Italian American Heritage Foundation Cultural Center - IAHF Hall	425 N 4th St	San Jose, CA 95112
Joyce Ellington Branch Library - Community Room	491 E Empire St	San Jose, CA 95112
SJSU Provident Credit Union Event Center	290 S 7th St	San Jose, CA 95112
Mexican Heritage Plaza - Classrooms 4 & 5	1700 Alum Rock Ave	San Jose, CA 95116
San Jose High School - Auxiliary Gym	275 N 24th St	San Jose, CA 95116
Olinder Community Center - Community Room	848 E William St	San Jose, CA 95116
Roosevelt Community Center - Dance Room	901 E Santa Clara St	San Jose, CA 95116
Capitol Park	800 Peter Pan Ave	San Jose, CA 95116
Taiwanese American Presbyterian Church - Gym Room	3675 Payne Ave	San Jose, CA 95117
Pioneer High School - Dance Room	1290 Blossom Hill Rd	San Jose, CA 95118
Vineland Branch Library - Community Room	1450 Blossom Hill Rd	San Jose, CA 95118
Silver Creek High School - Staff Lounge	3434 Silver Creek Rd	San Jose, CA 95121
Hillview Branch Library - Community Room	1600 Hopkins Dr	San Jose, CA 95122
Overfelt Adult Center - Classroom D101	1901 Cunningham Ave	San Jose, CA 95122
Calero High School - Multipurpose Room B110	420 Calero Ave	San Jose, CA 95123
Santa Teresa High School - Multi-Purpose Bldg. 1300 (<i>enter on the Santa Teresa Blvd entrance</i>)	6150 Snell Ave	San Jose, CA 95123
St. Timothy's Lutheran Church - Cafeteria	5100 Camden Ave	San Jose, CA 95124
Camden Community Center - Classroom 3	3369 Union Ave	San Jose, CA 95124
Willow Glen Community Center - Rooms 3 & 5	2175 Lincoln Ave	San Jose, CA 95125
San Jose Scottish Rite Center - Library	2455 Masonic Dr	San Jose, CA 95125
Italian Gardens Apartments - Community Room	1524 Almaden Rd	San Jose, CA 95125
San Jose Odd Fellows Community Center Hall - Fellowship Hall	1035 Emory St	San Jose, CA 95126
Roberto Cruz Leadership Academy - Jaguar Den	14281 Story Rd	San Jose, CA 95127
Alum Rock Youth Center - Community Room	137 N White Rd	San Jose, CA 95127
San Jose City College-Student Center - Community Room	2100 Moorpark Ave	San Jose, CA 95128
Vista Center for the Blind & Visually Impaired - Auditorium	101 N Bascom Ave	San Jose, CA 95128
Moreland Community Center - MU1 & MU2	1850 Fallbrook Ave	San Jose, CA 95130
PayPal Inc. - Building 12, Town Hall	2161 N 1st St	San Jose, CA 95131
Brooktree Elementary School - Music Room & Stage	1781 Olivetree Dr	San Jose, CA 95131
Bible Way Christian Center - Fellowship Room	2090 Oakland Rd	San Jose, CA 95131
Summerdale Elementary School - Music Room & Stage	1100 Summerdale Dr	San Jose, CA 95132
Berryessa Branch Library - Community Room	3355 Noble Ave	San Jose, CA 95132
Majestic Way Elementary School - FIS Room	1855 Majestic Way	San Jose, CA 95132
Independence High School - D-Commons	617 N Jackson Ave	San Jose, CA 95133
Village Square Library - Padma and Venkat Pullela Community Room	4001 Evergreen Village Sq	San Jose, CA 95135

All Vote Center Locations are accessible.



4-Day Vote Center Locations

Location	Address	City
St. Francis of Assisi Parish - Sandersfeld Hall	5111 San Felipe Rd	San Jose, CA 95135
Sikh Gurdwara Sahib - South Hall	3636 Gurdwara Ave	San Jose, CA 95148
Triton Museum of Art - Collection Hall	1505 Warburton Ave	Santa Clara, CA 95050
Valley Village Retirement Community - Building 18, Social Center	390 N Winchester Blvd	Santa Clara, CA 95050
Santa Clara University - Parlors B&C Room	820 Alviso St	Santa Clara, CA 95050
Muslim Community Association - Banquet Hall	3003 Scott Blvd	Santa Clara, CA 95054
UCSC Silicon Valley Extension - Rooms 2110 & 2130	3175 Bowers Ave	Santa Clara, CA 95054
Prince of Peace Lutheran Church - Fellowship Hall	12770 Saratoga Ave	Saratoga, CA 95070
Stanford University-Tresidder Center - Oak Lounge	459 Lagunita Dr	Stanford, CA 94305
Columbia Middle School - Library	739 Morse Ave	Sunnyvale, CA 94085
Fair Oaks Park - Park Building	540 N Fair Oaks Ave	Sunnyvale, CA 94085
Sunnyvale Middle School - Library	1080 Mango Ave	Sunnyvale, CA 94087
Sunnyvale Community Center - Ballroom	550 E Remington Dr	Sunnyvale, CA 94087

4-Day Vote Center Locations

Open November 2 - November 4, 2024 - from 10:00 a.m. to 6:00 p.m.

Election Day, November 5, 2024 - from 7:00 a.m. to 8:00 p.m.

Location	Address	City
Gilroy Library - Meeting Room	350 W 6th St	Gilroy, CA 95020
Morgan Hill Library - Program Room 107	660 W Main Ave	Morgan Hill, CA 95037

All Vote Center Locations are accessible.



LOCATIONS ARE SUBJECT TO CHANGE

Please visit www.sccvote.org for the most current list.

Voters may access the State Voter Information Guide at <https://voterguide.sos.ca.gov/> and the County Voter Information Guide at [sccvote.org/CVIG](https://www.sccvote.org/CVIG). These guides are also available at the Registrar of Voters' office and at all vote centers.

Electronic Ballot Marking Device Voting Instructions



Activate the voting machine by inserting the Voter Card into the yellow slot at the bottom of the voting machine.

Choose the language in which you wish to vote.

Make your selection by touching the candidate's name or measure response of your choice. A black checkmark will appear in the square next to the choice.

To change your selection, touch the selected choice again. The checkmark will disappear and you may make a new selection.



To vote for a qualified **write-in** candidate choice, touch the word **"WRITE-IN"**. When the keyboard screen appears, touch the letters of the candidate's name, then touch the **"ACCEPT"** button in the lower right-hand corner of your screen to continue.



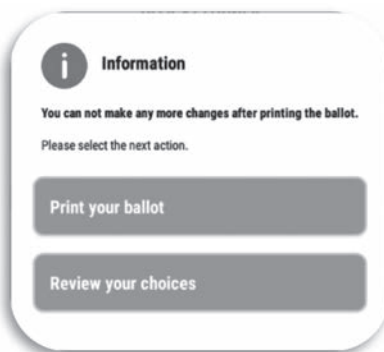
To change the text size, touch the **"Text Size"** button and select **"Normal"** or **"Large"**.



You may also change the language at any time of the voting session by selecting the **"Language"** button. Furthermore, you can change the appearance of the ballot on screen by selecting the **"View"** button.

To review your selections at any time prior to casting your ballot, touch **"Review"** at the bottom left of the screen. The **Review** screen will provide you with a summary of your selections. If you have not selected the maximum allowed selections in a contest, a warning will appear to let you know the contest is blank or under-voted. Touch the contest to return to it.

If you are satisfied with your selections, touch **"Print Ballot"** at the bottom right of the screen to bring up the print confirmation.



A final confirmation will appear asking you if you want to **Print your ballot** or **Review your choices**. If you want to **make a change to your selections**, touch **"Review your choices"**. If you want to **print your ballot**, touch **"Print your ballot"** and the ballot marking device will print your ballot with the choices you have made.

NOTE: You cannot change your selections after the ballot is cast.

The voting session will then be complete. The **Voter Card** will be deactivated, please return it to the Election Officer. If you have questions, please ask your Election Officer for assistance, or refer to the instructions on the side panel.

Note: The Sample of the Ballot located in this guide is a facsimile of the Optical Scan paper ballot not the Electronic ballot.



Conditional Voter Registration

Conditional Voter Registration (CVR) extends the existing 15-day registration deadline to eligible voters, allowing them to register and vote 14 days prior to an election through Election Day. An eligible voter would need to register at the County of Santa Clara Registrar of Voters' Office or a Vote Center to conditionally register to vote and vote a conditional ballot. If the voter is a military or overseas voter, or is a voter with disabilities, that voter may register to vote online and request to cast a ballot using the Remote Accessible Vote by Mail (RAVBM) system.

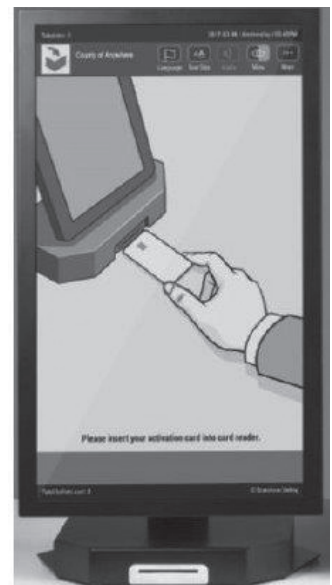
CVR ballots will be issued at the Registrar of Voters' Office and Vote Centers. Conditional ballots will not be mailed to voters.

In order to conditionally register, the voter must first complete an affidavit of registration. The affidavit is conveniently located on the front side of the CVR envelope. Once the affidavit is complete and submitted to the election official, a conditional ballot will be issued to the voter.

The affidavit will be processed and once the eligibility is determined and validated, the registration will become permanent and the conditional ballot will be counted. Conditional Voter Registrations are treated and processed in the same manner as other Voter Registration Applications; conditional ballots are treated and processed the same as provisional ballots.

If you have any questions regarding Conditional Voter Registration, please call (408) 299-VOTE (8683) or Toll Free (866) 430-VOTE (8683).

You may check the status of your voter registration at voterstatus.sos.ca.gov.



CVR was enacted in 2012, to be operative on the January 1st after the certification of a statewide voter registration database. VoteCal, California's statewide voter registration database, was certified on September 26, 2016; CVR became operative as of January 1, 2017. Effective January 1, 2017, Conditional Voter Registration is available to eligible voters in California pursuant to Election Codes 2170 through 2173.

County of Santa Clara Registrar of Voters' Office:

Fax: (408) 998-7314 – **Scan/Email:** voterinfo@rov.sccgov.org

Mail: Registrar of Voters, PO Box 611300, San Jose, CA 95161-1300

Website: www.sccvote.org/voterschoice

For questions, please call: (408) 299-VOTE (8683) or Toll Free: (866) 430-VOTE (8683)

Official Ballot Application

(आधिकारिक मतपत्र आवेदन पत्र/公式投票用紙申請書/ការដាក់ពាក្យសុំសន្លឹកឆ្នោតផ្លូវការ/공식 투표지 신청서)

The County of Santa Clara produces Ballots in Hindi, Japanese, Khmer, and Korean languages. Voters may request bilingual ballots in any of these languages by completing the application below and return it by mail to Registrar of Voters, Vote By Mail Division, 1555 Berger Dr., Bldg. 2, San Jose, CA 95112 or by fax to **(408) 293-6002** or by calling toll free **(866) 430-VOTE (8683)**, or by applying at **www.sccvote.org**. The last day to request a ballot to be mailed is **October 29**. Voters who are unable to mark a ballot may bring up to two individuals to assist them in voting.

Santa Clara काउंटी हिन्दी, जापानी, खमेर और कोरियाई भाषाओं में मतपत्र प्रकाशित करती है। मतदाता नीचे आवेदन पत्र भरकर इनमें से किसी भी भाषा में द्विभाषी मतपत्रों का अनुरोध कर सकते हैं और उसे डाक द्वारा Registrar of Voters, Vote By Mail Division, 1555 Berger Dr., Bldg. 2, San Jose, CA 95112 को या **(408) 293-6002** पर फ़ैक्स द्वारा या टोल-फ़्री नं. **(866) 430-VOTE (8683)** पर फ़ोन करके, या **www.sccvote.org** पर आवेदन पत्र देकर लौटा सकते हैं। मतपत्र को डाक से भेजने का अनुरोध करने का अंतिम दिन **29 अक्टूबर** है। जो मतदाता मतपत्र चिह्नित करने में असमर्थ हैं, वे मतदान में सहायता के लिए अपने साथ दो व्यक्तियों को ला सकते हैं।

Santa Clara 郡は投票用紙をヒンディー語、日本語、クメール語、韓国語で作成しています。有権者の方は、以下の申請書に必要事項を記入し、それを Registrar of Voters, Vote By Mail Division, 1555 Berger Dr., Bldg. 2, San Jose, CA 95112 まで郵送、**(408) 293-6002** までファクス送信、フリーダイヤル **(866) 430-VOTE (8683)** に電話、または **www.sccvote.org** で申請することにより、これらの言語のいずれかと英語の二か国語投票用紙を受け取る事ができます。投票用紙の郵送申請締め切りは **10 月 29 日**です。投票用紙に印を付けることができない有権者の方は、投票を援助してくれる付き添いが 2 人まで許可されます。

ខោនធី Santa Clara ផ្តល់សន្លឹកឆ្នោតជាភាសា ហិណ្ឌូ ជប៉ុន ខ្មែរ និង កូរ៉េ ។ អ្នកបោះឆ្នោតអាចស្នើសុំសន្លឹកឆ្នោតពីភាសានៅក្នុងភាសាទាំងនេះដោយការបំពេញពាក្យសុំខាងក្រោម ហើយបញ្ជូនវាតាមសំបុត្រទៅឲ្យ Registrar of Voters, Vote By Mail Division, 1555 Berger Dr., Bldg. 2, San Jose, CA 95112 ឬដោយទូរសារទៅកាន់លេខ **(408) 293-6002** ឬ ដោយហៅទៅលេខទូរស័ព្ទដោយឥតគិតថ្លៃ **(866) 430-VOTE (8683)** ឬ ដោយដាក់ពាក្យនៅ **www.sccvote.org** ។ ថ្ងៃចុងក្រោយដើម្បីស្នើសុំសន្លឹកឆ្នោតតាមសំបុត្រគឺថ្ងៃទី **29 ខែ តុលា** ។ អ្នកបោះឆ្នោតដែលមិនមានលទ្ធភាពដើម្បីគូសសន្លឹកឆ្នោតអាចនាំបុគ្គលពីររូបដើម្បីជួយពួកគេក្នុងការបោះឆ្នោត។

Santa Clara 카운티는 투표지를 힌디어, 일본어, 크메르어, 한국어로 제공합니다. 유권자는 아래의 신청서를 작성해 우편주소 Registrar of Voters, Vote By Mail Division, 1555 Berger Dr., Bldg. 2, San Jose, CA 95112, 또는 팩스 **(408) 293-6002** 로 제출해 위의 언어로 된 이중 언어 투표지를 요청할 수 있습니다. 그리고 수신 부담 전화 **(866) 430-VOTE (8683)**, 아니면 **www.sccvote.org** 를 통해서도 신청할 수 있습니다. 우편을 이용하는 투표지 신청은 **10 월 29 일** 마감됩니다. 투표지에 표기를 할 수 없는 투표자는 투표를 도와줄 인원으로 최대 2 명을 동반할 수 있습니다.

PREFERRED LANGUAGE - I would like to receive an official ballot in the following language:

- ☐ पसंदीदा भाषा: निम्नलिखित भाषा में आधिकारिक मतपत्र प्राप्त करना चाहता/चाहती हूँ।
- ☐ 私は日本語の公式投票用紙を希望します。
- ☐ ភាសាដែលចូលចិត្ត ៖ ខ្ញុំចង់ទទួលយកសន្លឹកឆ្នោតផ្លូវការជាភាសាខ្មែរ ។
- ☐ 선호 언어: 한국어로 된 공식 투표지를 받고 싶습니다.

Print Name / नाम लिखें / 氏名 (活字体) / សរសេរឈ្មោះ / 성명(정자체)

Residence Address / आवासीय पता / 現住所 / អាសយដ្ឋានស្នាក់នៅ / 거주지 주소

Mailing Address / डाक पता / 郵便宛先 / អាសយដ្ឋានផ្ញើសំបុត្រ / 우편 주소

Email / ईमेल / E メール / អ៊ីមែល / 이메일

(இக்ஷிமிலி டெலட் அப்டிஷன்/புரதிலிலி மதபுருகு அவேதன/தேவமபிபுலி (யதூவிததூ) துைலு ப்லதூ பவந்தூ/தூதூதூதூதூதூ வூக்குச்சூட்டு

విண்ணబ్బం/నమూనా బ్యాలెట్ దరఖాస్తు)

The County of Santa Clara provides the option to voters to receive a facsimile ballot – a copy of the Official Ballot that could be used as reference – in Punjabi, Gujarati, Tamil, Telugu, and Nepali languages if a voter resides in a precinct where the language is provided. Facsimile Ballots are available at the Registrar of Voters' Office and vote centers. Voters may also request a **facsimile ballot** by completing the application below and return it by mail to Registrar of Voters, Vote By Mail Division, 1555 Berger Dr., Bldg. 2, San Jose, CA 95112 or by fax to **(408) 293-6002** or by calling toll free **(866) 430-VOTE (8683)**, or by applying at **www.sccvote.org**. The last day to request a facsimile ballot to be mailed is **October 29**. Voters who are unable to mark a ballot may bring up to two individuals to assist them in voting.

Santa Clara કાઉન્ટી મતદારોને ફેક્સિમિલી બેલેટ મેળવવા માટેનો વિકલ્પ પ્રદાન કરે છે-આ સત્તાવાર મતપત્રની એવી એક નકલ જેનો સંદર્ભ તરીકે ઉપયોગ કરી શકાય છે - જે કોઈ મતદાર એવા કોઈ વિસ્તારમાં રહેતો હોય જ્યાં આ ભાષા પૂરી પાડવામાં આવતી હોય, તો તે પંજાબી, ગુજરાતી, તમિલ, તેલુગૂ અને નેપાળી ભાષાઓમાં આપવામાં આવે છે. ફેક્સિમિલી બેલેટ્સ મતદારોના રજિસ્ટ્રારની ઓફિસ અને મત કેન્દ્રો પર ઉપલબ્ધ છે. મતદારો ફેક્સિમિલી બેલેટ માટે નીચેની અરજી પૂર્ણ કરીને અને તેને મેલ દ્વારા Registrar of Voters, Vote By Mail Division, 1555 Berger Dr., Bldg. 2, San Jose, CA 95112 પર ઉપરત કરીને અથવા ફેક્સ દ્વારા (408) 293-6002 પર અથવા ટોલ ફ્રી (866) 430-VOTE (8683) પર કોલ કરીને અથવા www.sccvvote.org પર અરજી કરીને પણ વિનંતી કરી શકે છે. મેલ દ્વારા ફેક્સિમિલી બેલેટ મતપત્ર માટે ની વિનંતી કરવાનો 29 ઓક્ટોબર છે. જે મતદારો બેલેટ પર નિશાની કરી શકે તેમ ન હોય તેઓ તેમને મતદાનમાં સહાય કરવા માટે બે વ્યક્તિઓ સુધી લાવી શકે છે.

Santa Clara काउन्टीले मतदातालाई मेलमार्फत मतदान गर्न विकल्प - मतपत्र जसलाई आधिकारिक मतपत्रको प्रतिलिपि सन्दर्भको रूपमा प्रयोग गर्न सकिन्छ - भाषा प्रदान गर्ने सीमानामा बस्ने मतदाता छ भने पन्जाबी, गुजराती, तमिल, तेलगू र नेपाली भाषामा प्रदान गर्छ। प्रतिलिपि मतपत्रहरू मतदाता कार्यालयको रजिस्ट्रार, प्रारम्भिक मतदान स्थलहरू साइट र तोकिएका मतदान केन्द्रहरूमा उपलब्ध हुन्छन्। मतदाताले तलको निवेदन पूरा गरेर **प्रतिलिपि मतपत्र** पनि अनुरोध गर्न सक्छन र यसलाई मेलमार्फत Registrar of Voters, Vote By Mail Division, 1555 Berger Dr., Bldg. 2, San Jose, CA 95112 मा फिर्ता गर्न सक्छन् वा प्याक्स मार्फत (408) 293-6002 मा वा टोल फ्री (866) 430-VOTE (8683) कल गरेर वा www.sccvote.org मा आवेदन दिएर । मेलद्वारा नमुना मतपत्र अनुरोध गर्नको लागि अन्तिम दिन **अक्टोबर 29** हो। मतपत्रमा चिह्न लगाउन नसक्ने मतदाताहरूले आफूलाई मतदान गर्न सघाउन दुई जना व्यक्तिसम्म ल्याउन सक्छन्।

Santa Clara ਕਾਉਂਟੀ ਵੋਟਰਾਂ ਨੂੰ ਪੰਜਾਬੀ, ਗੁਜਰਾਤੀ, ਤਮਿਲ, ਤੇਲਗੂ ਅਤੇ ਨੇਪਾਲੀ ਭਾਸ਼ਾਵਾਂ ਵਿੱਚ ਪ੍ਰਤੀਕਿਰਤੀ ਰਤੀ ਬੈਲਟ ਪ੍ਰਾਪਤ ਕਰਨ ਦਾ ਵਿਕਲਪ ਮੁਹੱਈਆ ਕਰਵਾਉਂਦੀ ਹੈ - ਇਹ ਅਧਿਕਾਰਤ ਬੈਲਟ ਦੀ ਇੱਕ ਕਾਪੀ ਹੁੰਦੀ ਹੈ ਜਿਸ ਨੂੰ ਸੰਦਰਭ ਦੇ ਤੌਰ ਤੇ ਵਰਤਿਆ ਜਾ ਸਕਦਾ ਹੈ - ਅਤੇ ਇਹ ਤਾਂ ਪ੍ਰਧਾਨ ਕੀਤਾ ਜਾਂਦਾ ਹੈ, ਜੋ ਕੋਈ ਵੋਟਰ ਅਜਿਹੇ ਖੇਤਰ ਵਿੱਚ ਰਹਿੰਦਾ ਹੈ ਜਿੱਥੇ ਉਹ ਭਾਸ਼ਾ ਮੁਹੱਈਆ ਕਰਵਾਈ ਜਾਂਦੀ ਹੈ। ਪ੍ਰਤੀਕਿਰਤੀ ਬੈਲਟ ਵੋਟਰਾਂ ਦੇ ਰਜਿਸਟਰਾਰ ਦੇ ਦਫ਼ਤਰ ਅਤੇ ਵੋਟ ਕੇਂਦਰਾਂ ਤੇ ਉਪਲਬਧ ਹੁੰਦਾ ਹੈ। ਵੋਟ ਹੇਠ ਜਿੱਥੇ ਅਰਜ਼ੀ ਨੂੰ ਪੂਰਾ ਕਰਕੇ ਅਤੇ ਡਾਕ ਦੁਆਰਾ ਇਸਨੂੰ Registrar of Voters, Vote By Mail Division, 1555 Berger Dr, Bldg. 2, San Jose, CA 95112 ਨੂੰ ਵਾਪਸ ਭੇਜ ਕੇ ਜਾਂ ਫੈਕਸ ਰਾਹੀਂ (408) 293-6002 ਤੇ ਜਾਂ ਟੈਲ- ਫ਼ੀ ਨੰਬਰ (866) 430-VOTE (8683) :ਤੇ ਕਾਲ ਕਰਕੇ ਜਾਂ www.sccvotereg.org ਤੇ ਅਰਜ਼ੀ ਦੇ ਕੇ ਪ੍ਰਤੀਕਿਰਤੀ ਬੈਲਟ ਪ੍ਰਾਪਤ ਕਰਨ ਲਈ ਬੇਨਤੀ ਕਰ ਸਕਦੇ ਹਨ। ਡਾਕ ਰਾਹੀਂ ਪ੍ਰਤੀਕਿਰਤੀ (ਫੈਕਸਿਮਿਲੀ) ਬੈਲਟ ਦੀ ਬੇਨਤੀ ਦਾ ਆਖਰੀ ਦਿਨ 29 ਅਕਤੂਬਰ ਹੈ। ਵੋਟਰ ਜੋ ਬੈਲਟ :ਤੇ ਨਿਸ਼ਾਨ ਲਗਾਉਣ ਵਿੱਚ ਅਸਮਰੱਥ ਹਨ, ਉਹ ਸਹਾਇਤਾ ਕਰਨ ਲਈ ਦੇ ਵਿਅਕਤੀਆਂ ਨੂੰ ਆਪਣੇ ਨਾਲ ਲਿਆ ਸਕਦੇ ਹਨ।

Santa Clara கவுண்டியானது பஞ்சாபி, குஜராத்தி, தமிழ், தெலுங்கு மற்றும் நேபாளி மொழிகள் வழங்கப்படும் இடத்தில் உள்ள வாக்காளர்களுக்கு அந்த மொழியில் அதிகாரப்பூர்வ வாக்குச்சீட்டின் ஒரு பிரதியை குறிப்புக்காக மட்டும் பயன்படுத்துவதற்காக ஒரு தொலைநகல், வாக்குச்சீட்டைப் பெறும் விருப்பத்தை - வாக்காளர்களுக்கு வழங்குகிறது. வாக்காளர் பதிவாளரின் அலுவலகத்தில் மற்றும் வாக்கு மையங்களில் தொலைநகல் வாக்குச்சீட்டுகள் கிடைக்கின்றன. கீழேயுள்ள விண்ணப்பத்தை பூர்த்தி செய்து அதை Registrar of Voters, Vote By Mail Division, 1555 Berger Dr., Bldg. 2, San Jose, CA 95112-இல் அஞ்சல் மூலம் திருப்பி அனுப்பி அல்லது (408) 293-6002-இல் தொலைநகல் செய்து அல்லது கட்டணமில்லா எண் (866) 430-VOTE (8683) -ஐ அழைத்து அல்லது www.sccvote.org -இல் விண்ணப்பித்து ஒரு தொலைநகல் வாக்குச்சீட்டைக் கோரலாம். தபால் மூலம் தொலைநகல் வாக்குச்சீட்டைக் கோர 29 அக்டோபர் தேதி கடைசி நாள் ஆகும். வாக்குச்சீட்டைக் குறிக்க முடியாத நிலையில் உள்ள வாக்காளர்கள், வாக்களிக்க உதவ இரண்டு நபர்கள் வரை அழைத்து வரலாம்.

మొదల ద్వారా ఓటు వేసే ఓటర్లకు నమూనా బ్యాలెట్ అందుకునే పంపిణీను Santa Clara కౌంటీ అందుబాటులో ఉంచింది - అధికారిక బ్యాలెట్ యొక్క కాపీని ప్రామాణికంగా ఉపయోగించవచ్చు - బాష అందుబాటులో గల ప్రాంతంలో గనుక ఓటర్ నివసిస్తున్నట్లయితే - వారికి పంజాబీ, గుజరాతీ, తమిళం, తెలుగు, మరియు నేపాలీ భాషల్లో నమూనా బ్యాలెట్ అందించబడుతుంది. నమూనా బ్యాలెట్టు రిజిస్ట్రార్ ఆఫ్ ఓటర్స్ ఆఫీసు, ముందుపు ఎన్నికలు జరిగే ప్రాంతాలు, మరియు ఎలక్షన్ రీజన్ నిర్ధారిత ఓటు కేంద్రాల వద్ద లభ్యమవుతాయి. ఓటర్లు క్రింది దరఖాస్తును పూరి చేయడం ద్వారా మరియు దాన్ని Registrar of Voters, Vote By Mail Division, 1555 Berger Dr., Bldg. 2, San Jose, CA 95112 కు మొదల చేయడం ద్వారా లేదా (408) 293-6002 కు ఫ్యాక్స్ చేయడం ద్వారా లేదా టోల్ ఫ్రీ నెంబర్ (866) 430-VOTE (8683) కు కాల్ చేయడం ద్వారా, లేదా www.sccvote.org వెబ్ సైట్ లో అప్లై చేయడం ద్వారా నమూనా బ్యాలెట్టు అభ్యర్థించవచ్చు. మొదల ద్వారా పాసిమైల్ బ్యాలెట్టు అభ్యర్థించడానికి చివరి తేదీ **అక్టోబర్ 29**. బ్యాలెట్ పై మార్కు చేయలేని ఓటర్లు, ఓటింగ్ వారికి సహాయపడటానికి ఇద్దరు వ్యక్తుల వరకు తీసుకురావచ్చు.

PREFERRED LANGUAGE - I would like to receive a facsimile ballot in the following language:

- ☐ పసంఘిని బాషా - క్రింద వేరిని బాషాలో క్రియించబడే ప్రాంతంగా పరిగణించండి.
- ☐ ఇచ్చాడేమిటి బాషా - మిగిలిన బాషాలో నమూనా ప్రాంతంగా పరిగణించండి.
- ☐ పరిశీలనా కాల - మే 15వ తేదీ (సోమవారం) వేరిని బాషాలో పరిగణించండి.
- ☐ విధిపరమైన మొత్తం - పరిగణించబడే మొత్తంలోని విధిపరమైన మొత్తం మొత్తంగా పరిగణించండి.
- ☐ ఎందుకంటే దీనిని బాషా - సేవ ద్వారా పరిగణించబడే బాషాలో పరిగణించండి.

Print Name / मुद्रित नाम / प्रिन्ट नाम / साद अखरां ਵਿੱਚ ਨਾਮ ਲਿਖੋ / அச்சிடும் பெயர் / ముద్రణ పేరు

Residence Address / రહેస్దాదాన్ శరనామ్ / आवास ठेगाना / तिहाईसा पता / குடியிருக்கும் (முகவரி) / నివాస చిరునామా

Mailing Address / टपाल ससनाडु / डेल गर्ने ठेगाना / डाव या / அஞ்சல் முகவரி / மெயிலிங் அட்ஸ்

Email / ઇમેઇલ / ઇમેલ / ઈમેલ / மின்னஞ்சல் / ఈమెయిల్



County of Santa Clara
Registrar of Voters

VOTER'S ACTION REQUEST FORM

FOR VRD USE ONLY

Voter ID #:

Group #:

Action Completed By:

Date Processed:

Previously Processed By:

Date Previously Processed:

1. Voters **must** already be registered to vote in the County of Santa Clara for this form to be processed.
2. **This form is not intended to change names and/or political party preferences.** To do so, voters **must** re-register.
3. Visit www.sccvote.org to register to vote or contact our office.
4. If requesting an action on behalf of a voter, provide **their** information in the **CURRENT VOTER INFORMATION** box below.

CURRENT VOTER INFORMATION:

Please complete and print all information clearly for processing purposes.

Name: FIRST MIDDLE LAST Birth Date: m m / d d / y y y y

Registered Address: CURRENT

VOTER'S SIGNATURE (REQUIRED):

Date: m m / d d / y y y y

County Voter Information Guide (CVIG) Delivery Preference:

☐ **Go Green:** I no longer wish to receive a paper CVIG by mail and would prefer to receive an **online CVIG**. Please email my CVIG to:

☐ I would prefer to receive a paper CVIG by mail.

Voter Language Preference: **ALL voters will receive election materials in English and other available materials in your preferred language.**

- Official Ballots and CVIGs are available in Chinese, Spanish, Tagalog, and Vietnamese.
- Official Ballots are also available in Hindi, Japanese, Khmer, and Korean.
- Facsimile Ballots are available upon request in targeted precincts in Gujarati, Nepali, Punjabi, Tamil, and Telugu.

Select **ONE** Language Preference Below:

☐ English ☐ Chinese ☐ Spanish ☐ Tagalog ☐ Vietnamese ☐ Hindi ☐ Japanese
☐ Khmer ☐ Korean ☐ Gujarati ☐ Nepali ☐ Punjabi ☐ Tamil ☐ Telugu

☐ My name is **misspelled**. The incorrect spelling is: _____ The **correct spelling** is: _____

A name change, other than to correct a misspelling, requires a new Voter Registration Application to be completed.

☐ I moved to a **new residence** address within the County of Santa Clara (i.e., street address & city):

☐ **DO NOT HAVE A STREET ADDRESS**, but I am often near (must provide intersecting cross streets, landmark, or routes, N, S, SW, etc.):

☐ My mailing address differs from my residence address; I **want to add or update my MAILING address to:**

☐ Remove the following **MAILING** address: _____

☐ Remove any phone number ☐ I want to update my phone number to: _____

☐ Remove any email address ☐ I want to update my email to: _____

Cancel Voter Registration:

☐ Please cancel **my** registration. (**Reason**): _____

☐ Voter named **above** is deceased.

Name of person reporting death: _____ Phone: _____

SIGNATURE of person reporting death (**REQUIRED**): _____

Return to the Registrar of Voters' Office:

Email: voterinfo@rov.sccgov.org — Mail: Registrar of Voters, PO Box 611300, San Jose, CA 95161-1300 — Fax: (408) 998-7314

Questions? Please call: (408) 299-VOTE (8683) or Toll Free: (866) 430-VOTE (8683)

Myth Busters

Trusted Election Information in Santa Clara County

Ensuring Public Trust in Elections by communicating and providing access to Accurate, Current, and Transparent (ACT) election information to the voters of Santa Clara County.



Fact: Sharpie, blue, and black ink are okay to use.

Fact: Holes in the Vote by Mail envelopes serve as guides to help voters with special needs sign accurately.

Fact: The tabulation equipment is not connected to the internet.

Fact: Vote by Mail is the same as Absentee Voting.



Scan the QR code or visit
vote.santaclaracounty.gov/myth-busters
for additional information about
Myths & Facts and Educational Flyers.

Go Green

with the Registrar of Voters' Office



It's easy, it's free and saves a tree!

Vote Early at the Registrar of Voters' Office or at Vote Centers

Registrar of Voters' Office

1555 Berger Drive, Building 2, San Jose, CA 95112

Voting hours: Monday - Friday

October 7 - November 4

8 a.m. to 5 p.m.

Saturday - Sunday

October 26 - 27 & November 2 - 3

9 a.m. to 5 p.m.

Election Day

November 5

7 a.m. to 8 p.m.

Vote Centers are open

October 26 - November 5 (locations and schedules inside this guide)

DETACH HERE

From:

Did you sign the form?

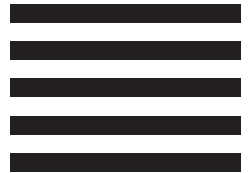


POSTAGE WILL BE PAID BY ADDRESSEE



REGISTRAR OF VOTERS
VOTE BY MAIL DIVISION
PO BOX 49003
SAN JOSE CA 95161-9954

NO POSTAGE
NECESSARY
IF MAILED
IN THE
UNITED STATES



THE CHOICE IS YOURS

VOTE BY MAIL

Ways to Return Your VBM Ballot:

OR

VOTE IN PERSON

Services Provided at Vote Centers:



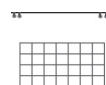
**FREE POSTAGE
PAID ENVELOPE**



**OFFICIAL
BALLOT
DROP BOX**



**ANY
VOTE CENTER**



**OPEN
MORE DAYS**



**NEW & MORE
ACCESSIBLE
VOTING EQUIPMENT**



**BILINGUAL BALLOTS &
LANGUAGE ASSISTANCE**

COUNTY OF SANTA CLARA
REGISTRAR OF VOTERS
PO BOX 611360
SAN JOSE CA 95161-1360



NONPROFIT ORG.
U.S. POSTAGE
PAID
SANTA CLARA COUNTY
REGISTRAR OF VOTERS

ELECTRONIC SERVICE REQUESTED

Mail To:

November 5, 2024, General Election

Name:

Residence Address:

Mailing Address:

☐ I'm requesting a replacement ballot. Application due in Registrar's Office by 5 p.m. on 10/29/2024.

My preferred language is:

- | | |
|---|--|
| <input type="checkbox"/> English | <input type="checkbox"/> Punjabi / ਪੰਜਾਬੀ |
| <input type="checkbox"/> Chinese / 中文 | <input type="checkbox"/> Spanish / Español |
| <input type="checkbox"/> Gujarati / ગુજરાતી | <input type="checkbox"/> Tagalog |
| <input type="checkbox"/> Hindi / हिन्दी | <input type="checkbox"/> Tamil / தமிழ் |
| <input type="checkbox"/> Japanese / 日本語 | <input type="checkbox"/> Telugu / తెలుగు |
| <input type="checkbox"/> Khmer / ភាសាខ្មែរ | <input type="checkbox"/> Vietnamese / Tiếng Việt |
| <input type="checkbox"/> Korean / 한국어 | <input type="checkbox"/> Other _____ |
| <input type="checkbox"/> Nepali / नेपाली | |

X
SIGNATURE REQUIRED DATE

You can also request a replacement ballot by calling (408) 299-VOTE (8683) or toll free (866) 430-VOTE (8683).

PLEASE LOOK INSIDE FOR A COMPLETE LIST OF VOTE CENTERS AND DROP BOX LOCATIONS OR VISIT WWW.SCCVOTE.ORG.

Important Dates:

- | | |
|------------|---|
| October 7 | Official Ballots mailed to all voters - Ballot Drop Boxes open |
| October 7 | Early Voting starts at the Registrar of Voters' Office |
| October 21 | Last day to register to vote |
| October 26 | 11-Day Vote Centers open |
| October 29 | Last day to request a replacement ballot to be mailed to you |
| November 2 | 4-Day Vote Centers open |
| November 5 | Election Day - All ballots must be postmarked or received by 8 p.m. |